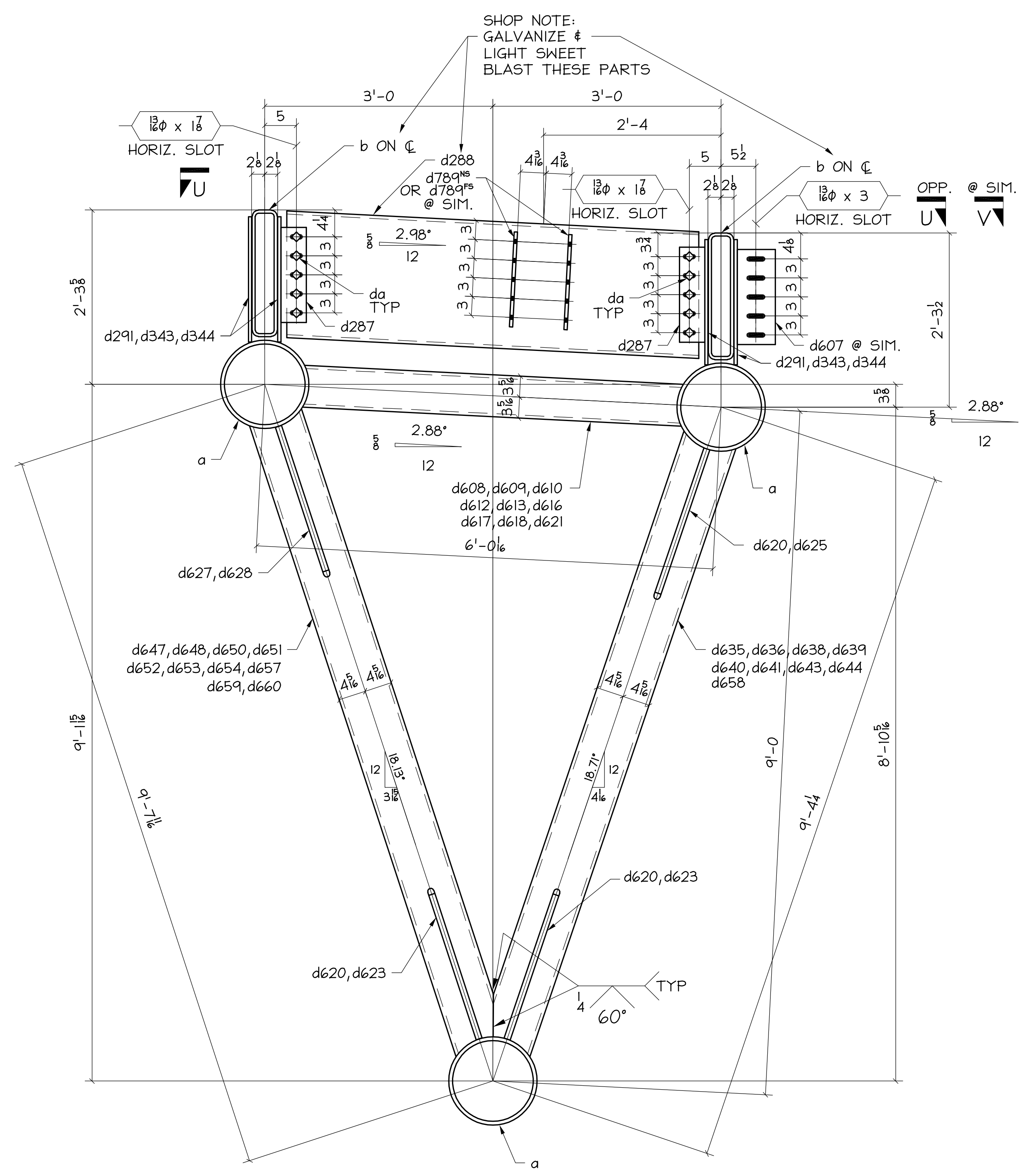
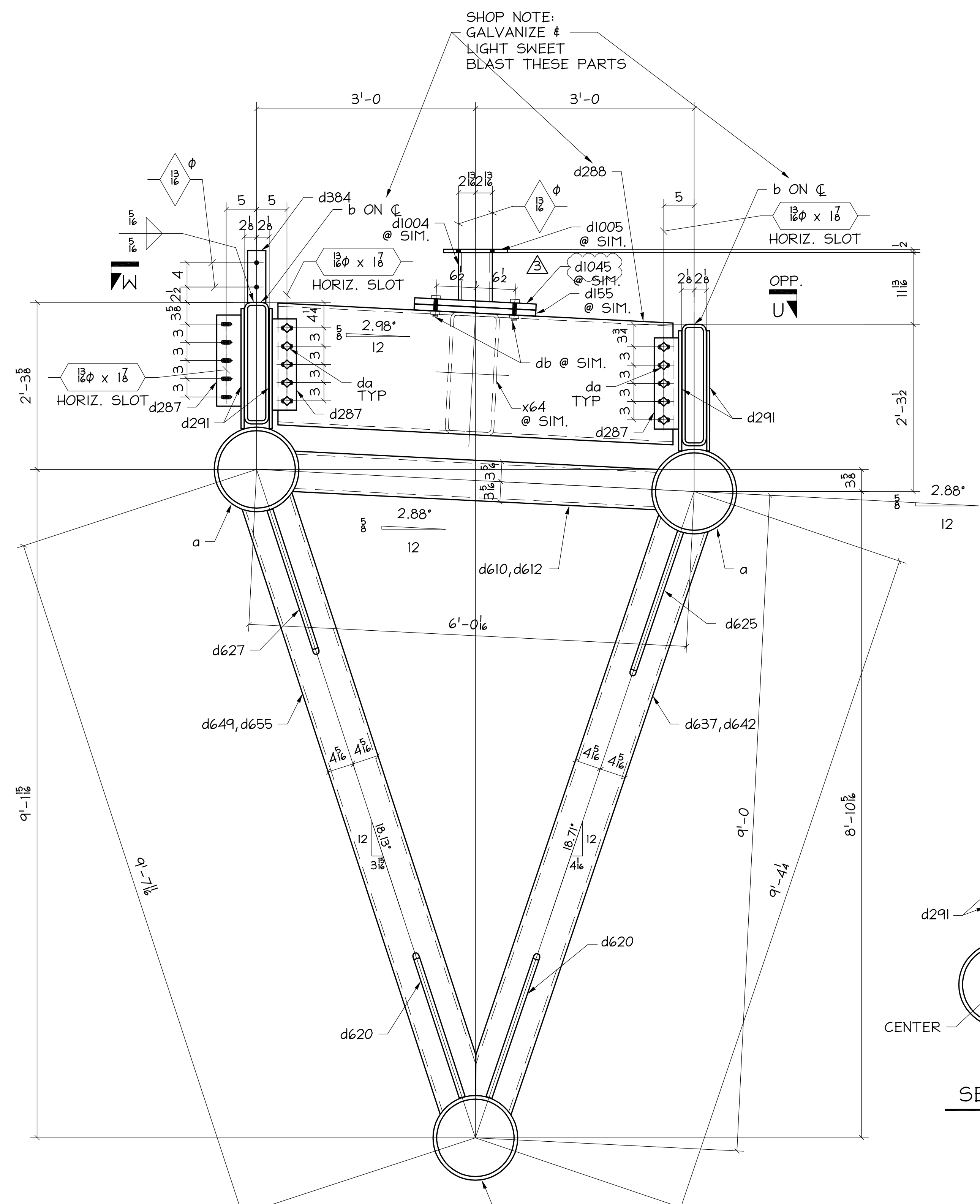


BILL OF MATERIAL

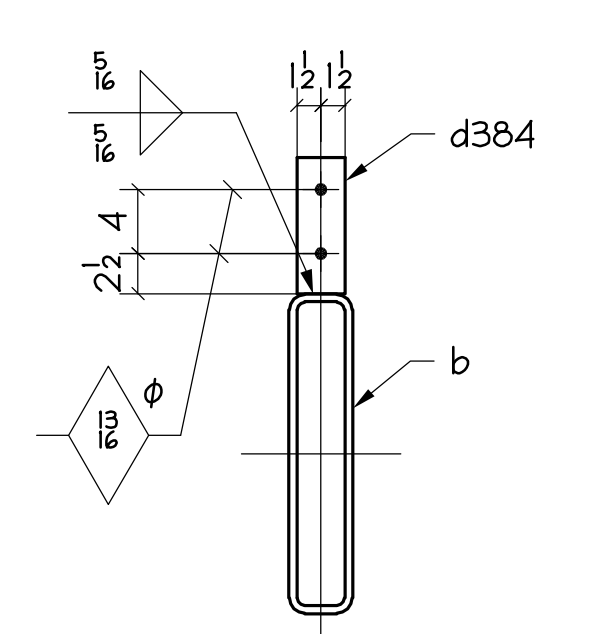
NO. IN SHIP	SHIP MARK	TOTAL NO Pcs	PC MARK	DESCRIPTION	LENGTH FT.	REMARKS	ADV BILL	WEIGHT UNIT	TOTAL
1	d648	1		HSS8.625 x0.500	9	7 $\frac{1}{2}$			
1	d649	1		HSS8.625 x0.500	9	8 $\frac{3}{8}$			
1	d650	1		HSS8.625 x0.500	9	8 $\frac{3}{8}$			
2	d651	2		HSS8.625 x0.500	9	8 $\frac{3}{8}$			
4	d652	4		HSS8.625 x0.500	9	8 $\frac{3}{8}$			
3	d653	3		HSS8.625 x0.500	9	8 $\frac{3}{8}$			
2	d654	2		HSS8.625 x0.500	9	8 $\frac{3}{8}$			
1	d655	1		HSS8.625 x0.500	9	8 $\frac{3}{8}$			
1	d656	1		HSS8.625 x0.500	8	7 $\frac{1}{2}$			
1	d657	1		HSS8.625 x0.500	9	7 $\frac{1}{2}$			
1	d658	1		HSS8.625 x0.500	9	5 $\frac{1}{2}$			
1	d659	1		HSS8.625 x0.500	9	7 $\frac{1}{2}$			
2	d660	2		HSS8.625 x0.500	9	8 $\frac{3}{8}$			
12	d789	12		EP2 x4	1	3			
1	d1001	1		EP2 x12	1	0			
1	d1004	1		5P STD PIPE	0	8 $\frac{1}{2}$			
1	d1005	1		EP2 x10	0	10 $\frac{1}{2}$			
1	d1006	1		6P STD PIPE	1	3 $\frac{1}{2}$			
1	d1045	1		EP2 x20	1	8			
4	x1	4		EP2 x4	0	11			
4	x7	4		EP2 x10	1	1			
6	x62	6		EP2 x6	0	6			
1	x64	1		HSS20x8x $\frac{5}{16}$	1	7 $\frac{1}{2}$	GALV.		164/9
170	da	170		A325N W/N 4 W	0	11	GALV.		
8	db	8		1 $\frac{1}{2}$ " A490 W/N # 2-W	0	4	GALV.		



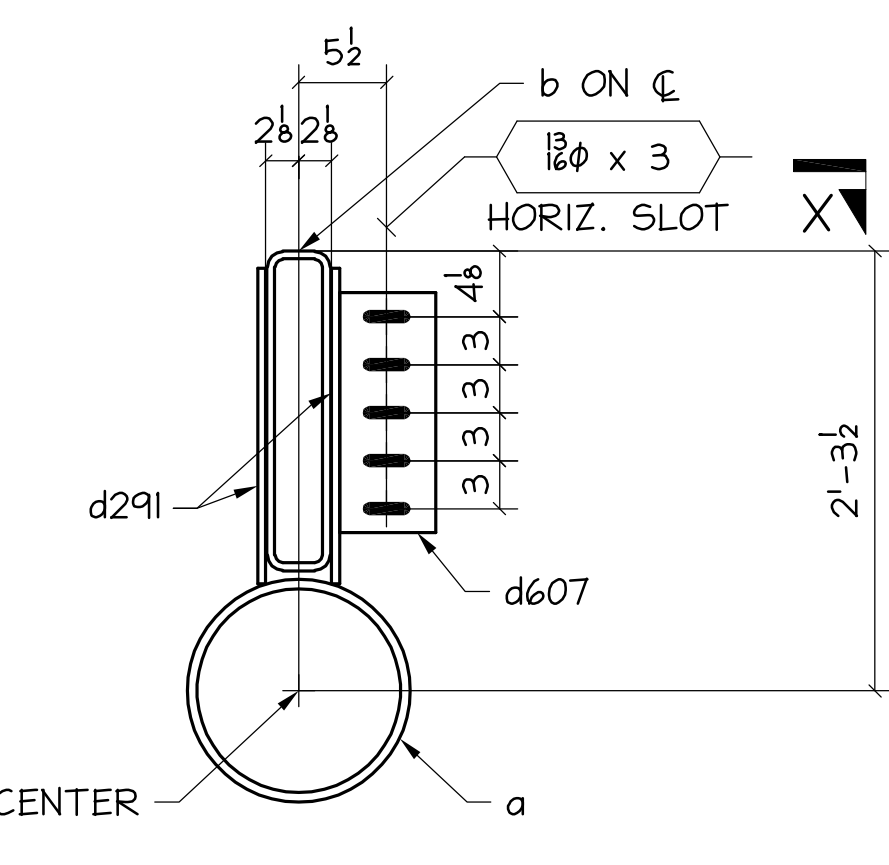
SECTION D
TRUSS SHOWN IN POSITION



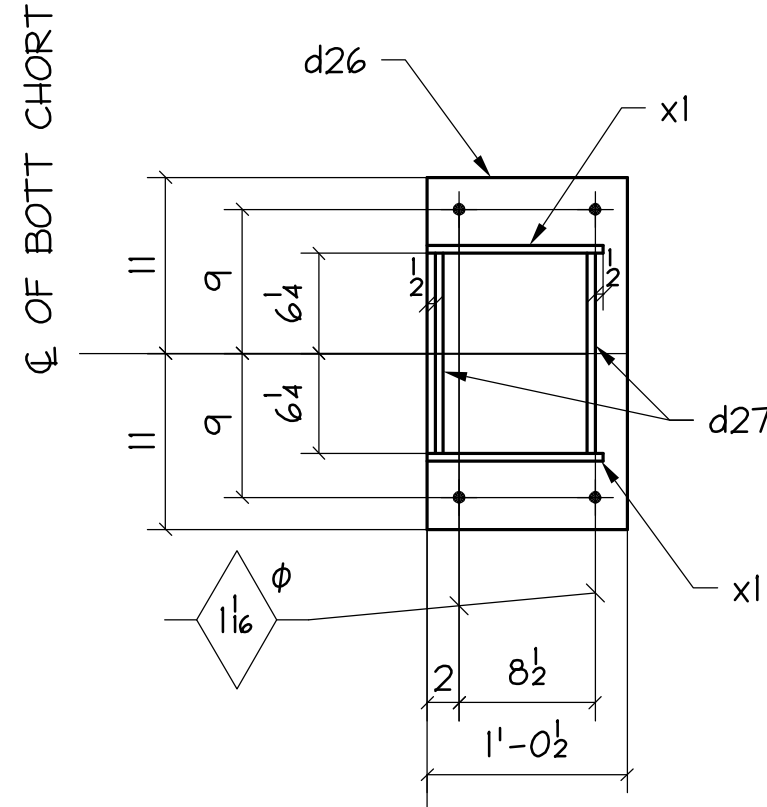
SECTION F
TRUSS SHOWN IN POSITION



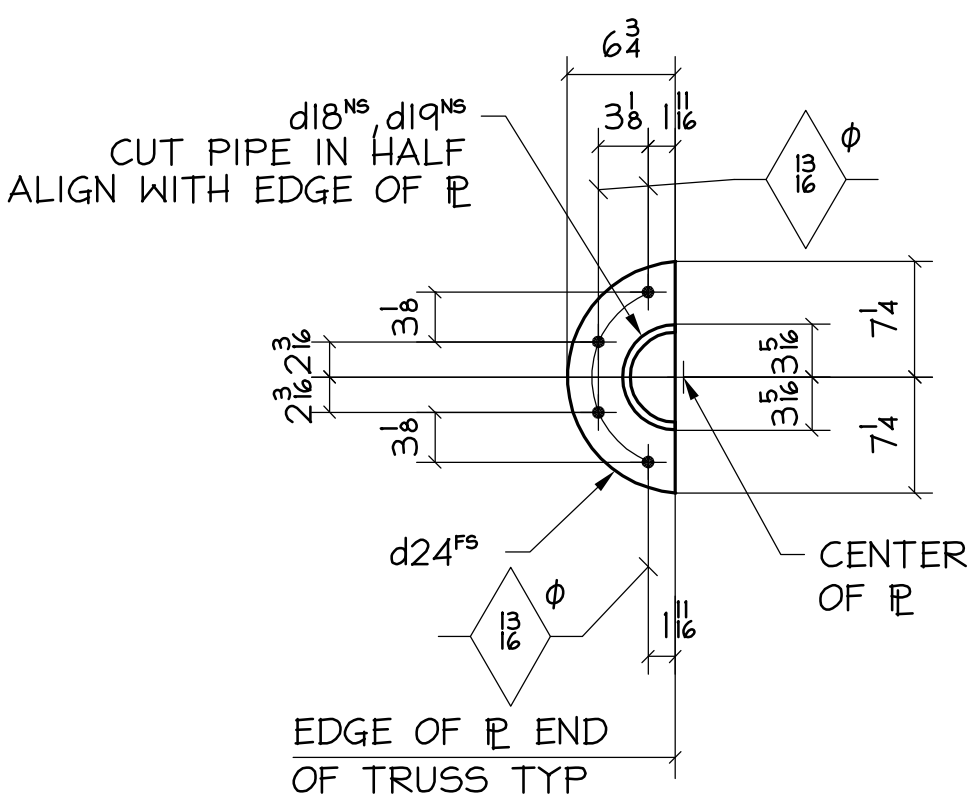
SECTION M



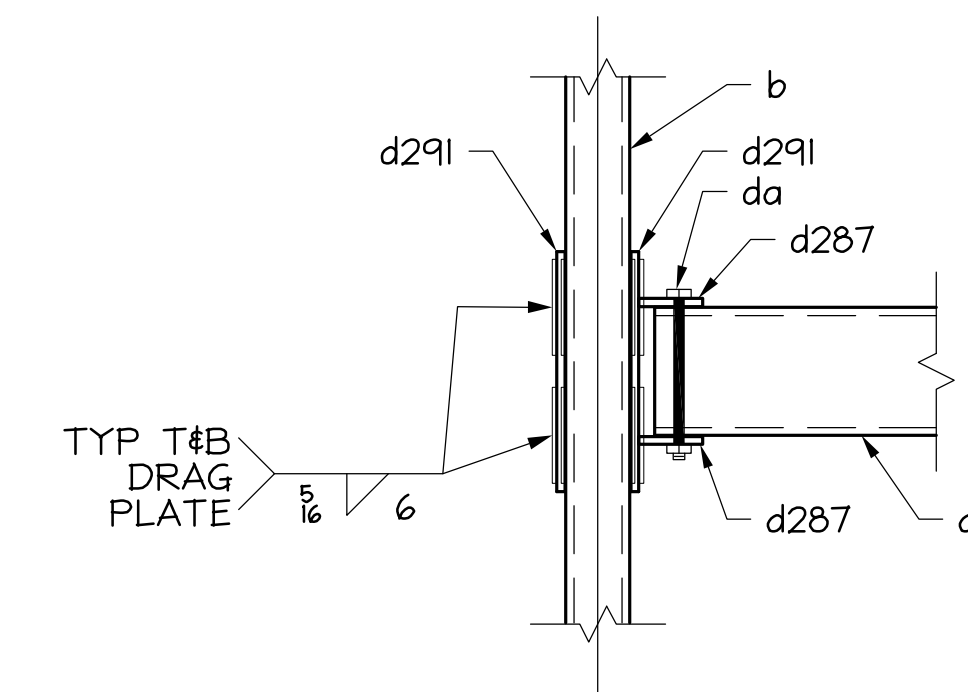
SECTION N



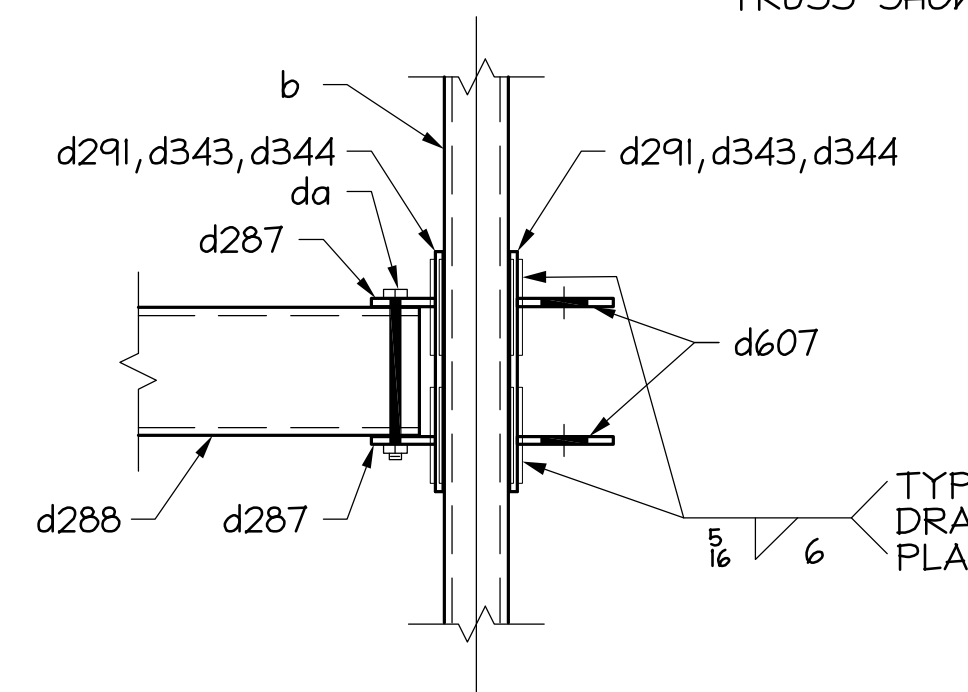
SECTION P



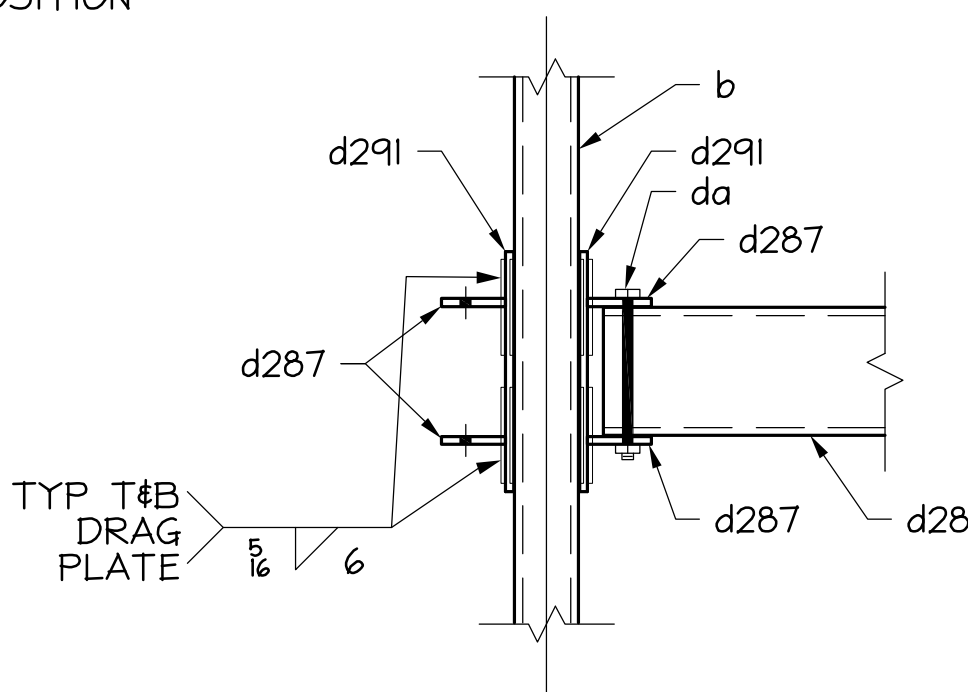
SECTION T



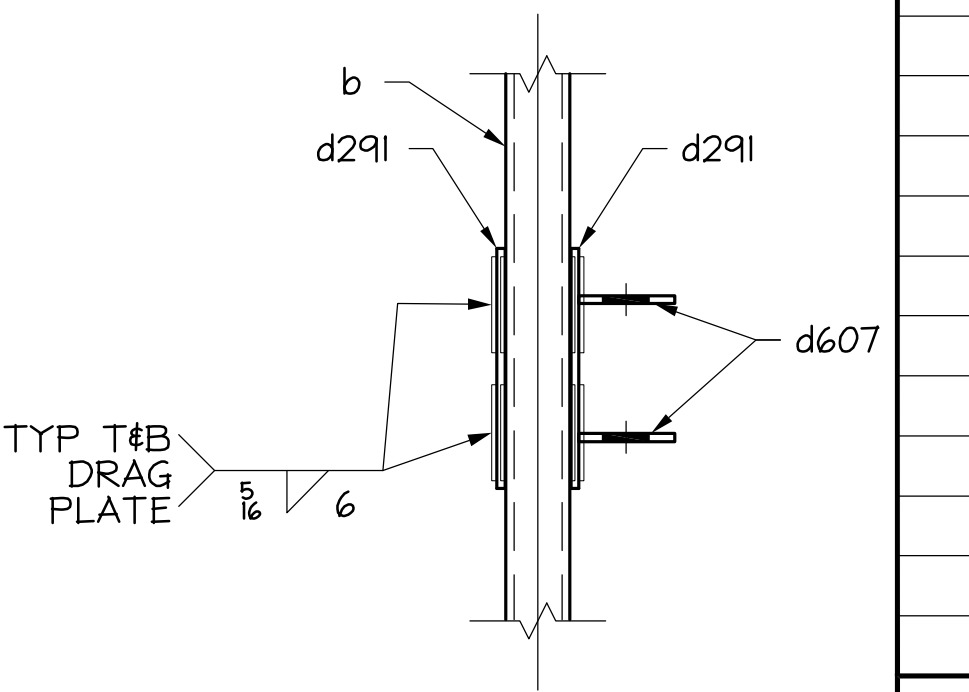
SECTION U



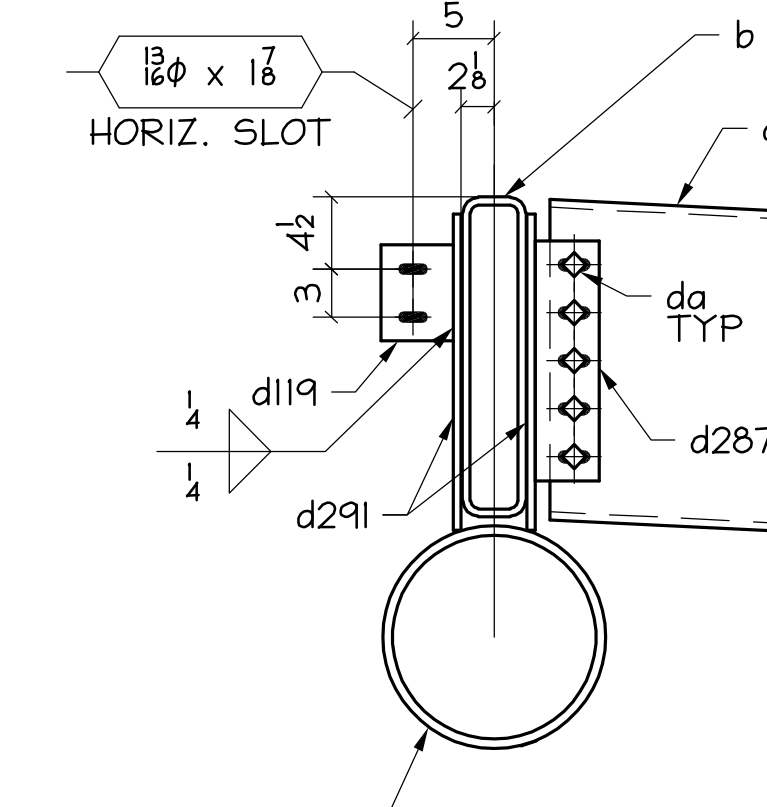
SECTION V



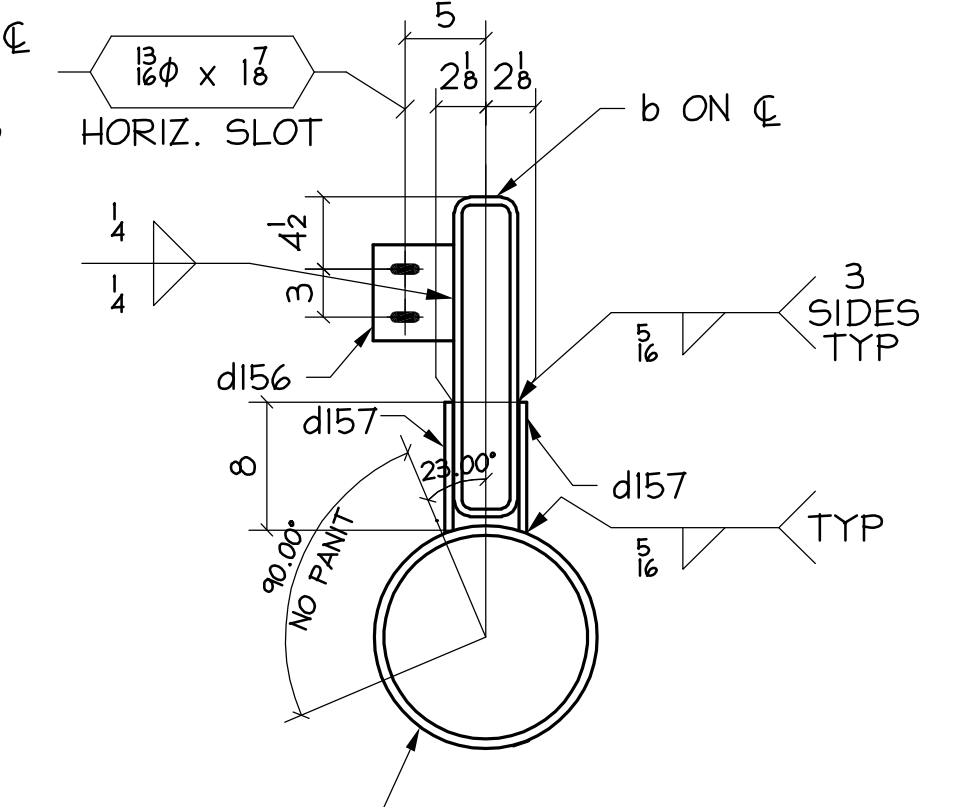
SECTION W



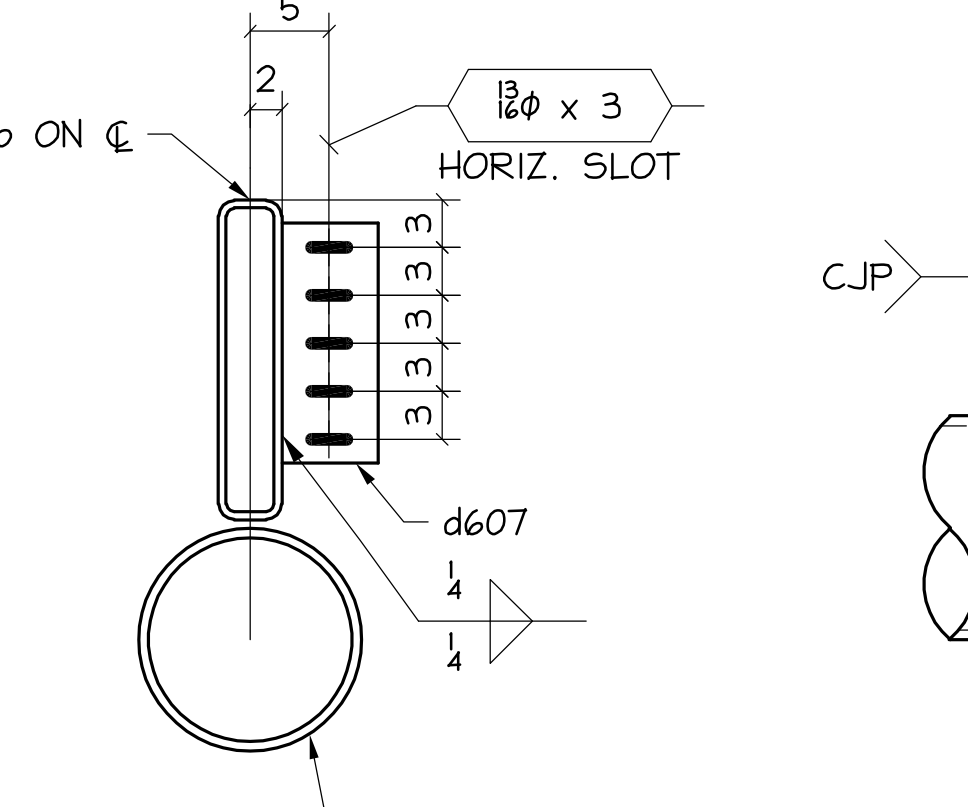
SECTION X



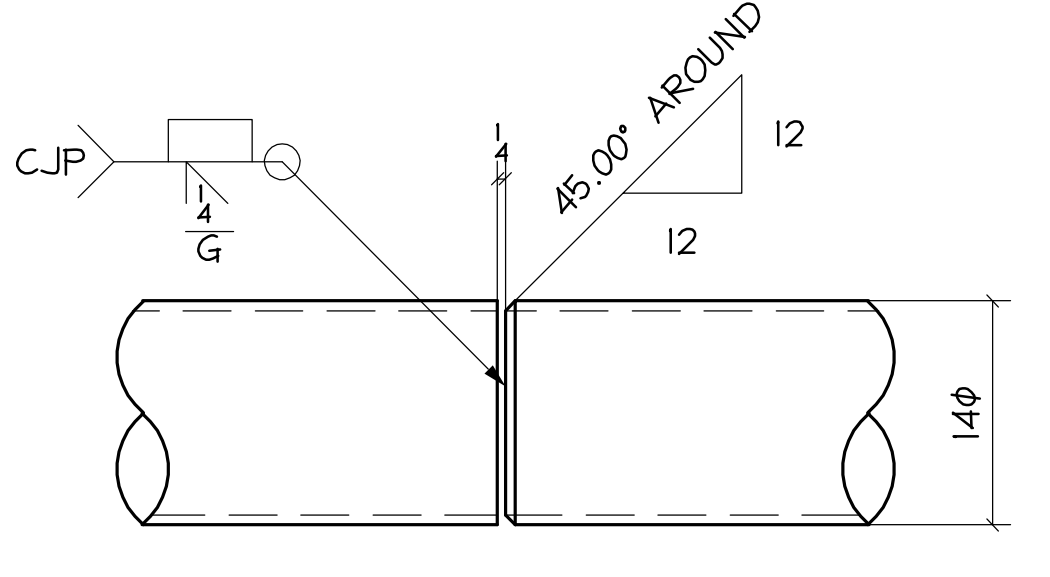
SECTION BB



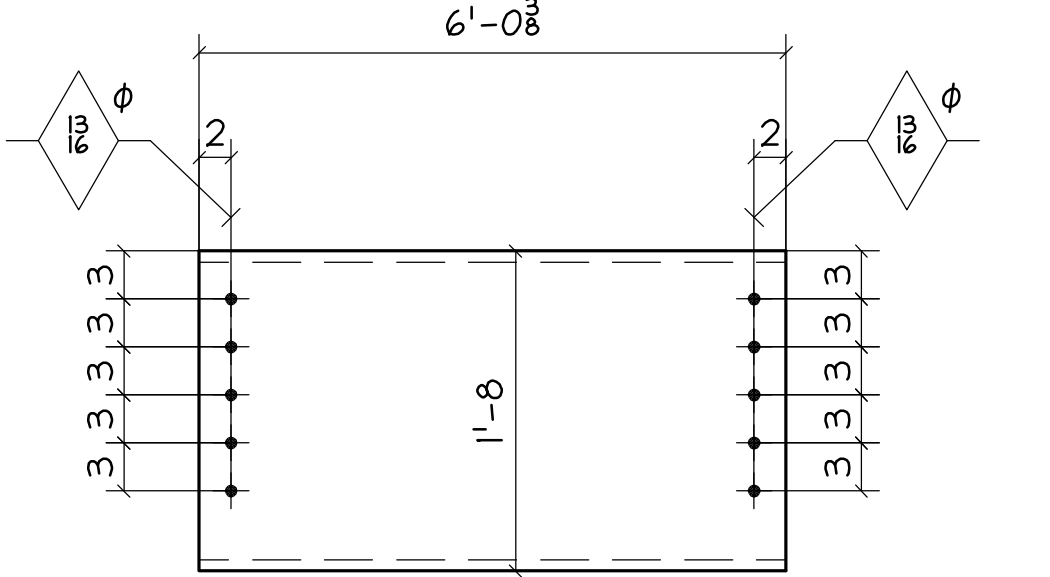
SECTION CC



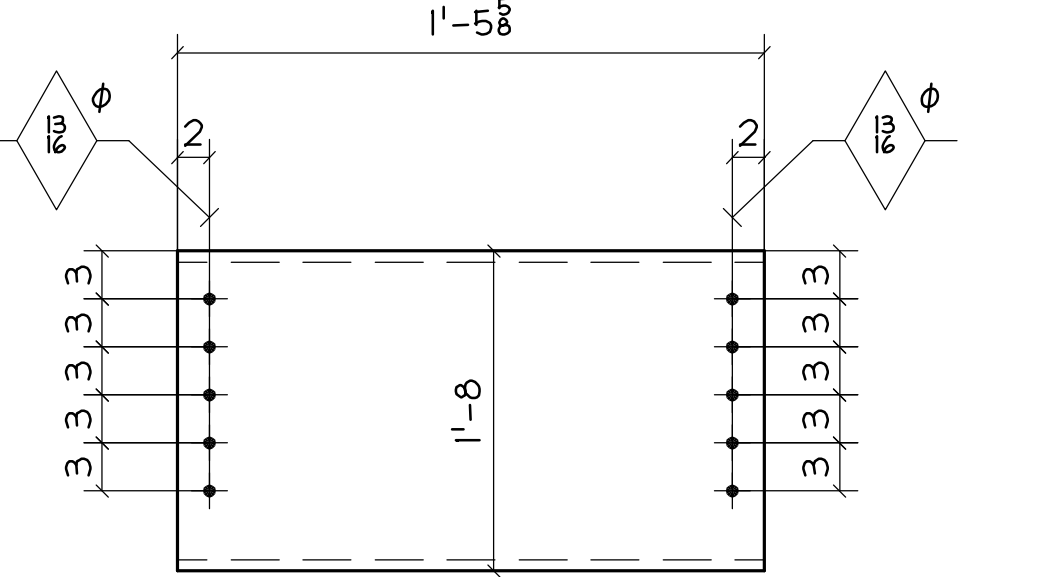
SECTION DD



DETAIL I



c ~ HSS20x8x $\frac{5}{16}$ x6'-0 $\frac{3}{8}$ ~ ONE



d ~ HSS20x8x $\frac{5}{16}$ x1'-5 $\frac{5}{8}$ ~ ONE

SHOP NOTE: WORK THIS DWG WITH 116a, 116b, 116c, 116d, 116f.

FABRICATION NOTES:

HOLES UNO: 1/2"

WELD: E70XX <LH>

REF DWG: E5

MATERIAL UNO: A36 W=A992
HSS=A500 GRB, PIPE=A53

PAINT: SP6, 1st Coat:TnemeZinc 90-97
2nd coat: Series 27 Typoxy (UNO)

NOTES:

VERIFICATION OF DIMENSIONS, DETAILS, AND ETC. ARE REQUESTED, WHERE INDICATED. IF EACH VERIFICATION IS NOT NOTED OTHERWISE, IT WILL BE ASSUMED TO BE CORRECT AS SHOWN.

3	3/4/10	WT	Revised	FOR FABRICATION
2	1/19/10	WT	Revise no paint area # add bev	FOR FABRICATION
1	1/7/10	WT	Issue For Fabrication	FOR PURCHASING
C	12/30/09	WT	Revised	FOR APPROVAL

REV DATE BY DESCRIPTION DWG STATUS DATE

EVERGREEN
WATER PARK
MCMINNVILLE, OREGON

ENGR: MACKENZIE
CONTR: HOFFMAN

ADI / ANGLE DETAILING, INC.
ADI JOB# 15-114-001

COLUMBIA WIRE & IRON WORKS
5555 N. Channel Portland, Ore. 97217
www.cwiil.com/503-286-6600

DRAWN BY: LX
CHKD BY: DZH
JOB NO: 15-114-001
DWG NO: 116g