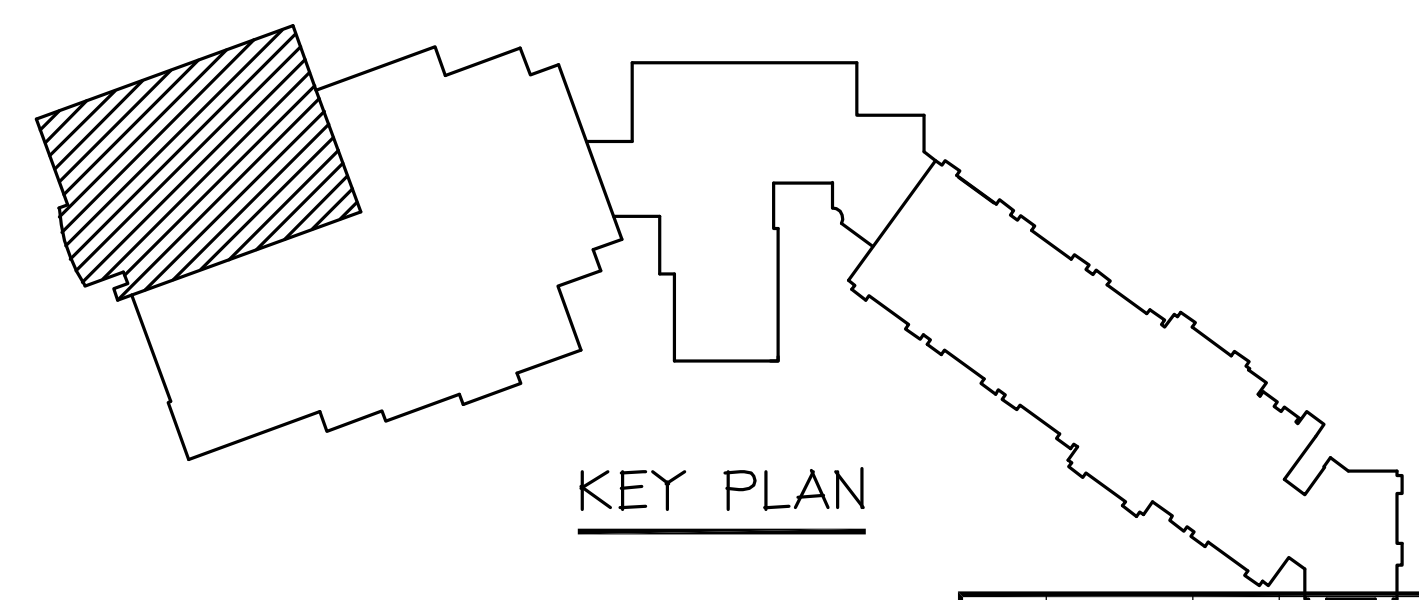


- LEVEL 3 WEST WING PLAN**
- 1). REF 1/S113.1
 - 2). TOS. =28'9"-4 UNO.
 - 3). (X) INDICATES NUMBER OF 3/8" x 5 HEADED SHEAR STUDS IF NUMBER NOT INDICATED, PLACE @ 12" O.C.
 - 4). L3x3x4 UNO.
 - 5). DS INDINATES DRAG STRUT CONNECTIONS. BEAM TO COL FLG CONN. SEE DETAIL 6/E7005

- ROOF WEST WING FRAMING PLAN**
- 1). REF 1/S115.1
 - 2). c=? INDICATES AMOUNT OF POSITIVE BEAM CAMBER
 - 3). (X) INDICATES NUMBER OF 3/8" x 5 HEADED SHEAR STUDS IF NUMBER NOT INDICATED, PLACE @ 12" O.C.
 - 4). L3x3x4 UNO.
 - 5). DS INDINATES DRAG STRUT CONNECTIONS. SEE DETAIL 6,7/E7005 UNO.



J:\COLUMBIA_WIRE_AND_IRON\31-028-001(SPRINGBROOK)\PLANS\E7000.DWG 12/31/08 9:27am E700 melissam.mosley

VERIFICATION OF DIMENSIONS, DETAILS, AND ETC. ARE REQUESTED WHERE INDICATED. IF EACH VERIFICATION IS NOT NOTED OTHERWISE, IT WILL BE ASSUMED TO BE CORRECT AS SHOWN

| REV | DATE | BY | DESCRIPTION | DWG STATUS | DATE |
|-----|---------|----|---|------------|------|
| I | 8/21/08 | WT | For Field Use | | |
| B | 8/8/08 | WT | For Approval | | |
| A | 1/18/08 | WT | FOR APPROVER REVIEW TO CONFIRM OR PROVIDE NOTED ITEMS | | |

SPRINGBROOK PROPERTIES
THE ALLISON
2500 N. SPRINGBROOK ROAD, NEWBERG, OR

ENGR: KGA
CONTR: LCL

COLUMBIA WIRE & IRON WORKS
5555 N. Channel Portland, Ore. 97217
www.cwiil.com/503-286-6600

DRAWN BY: LX
CHK'D BY: CML
JOB NO: 31-028-002
DWG. NO: E7000

ADI / ANGLE DETAILING, INC.
ADI JOB# 31-028-002