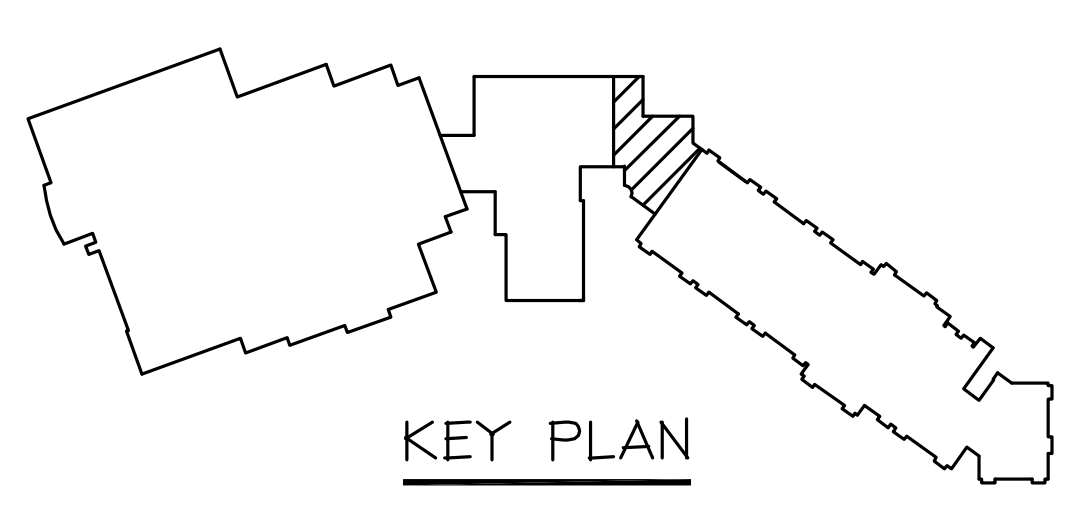
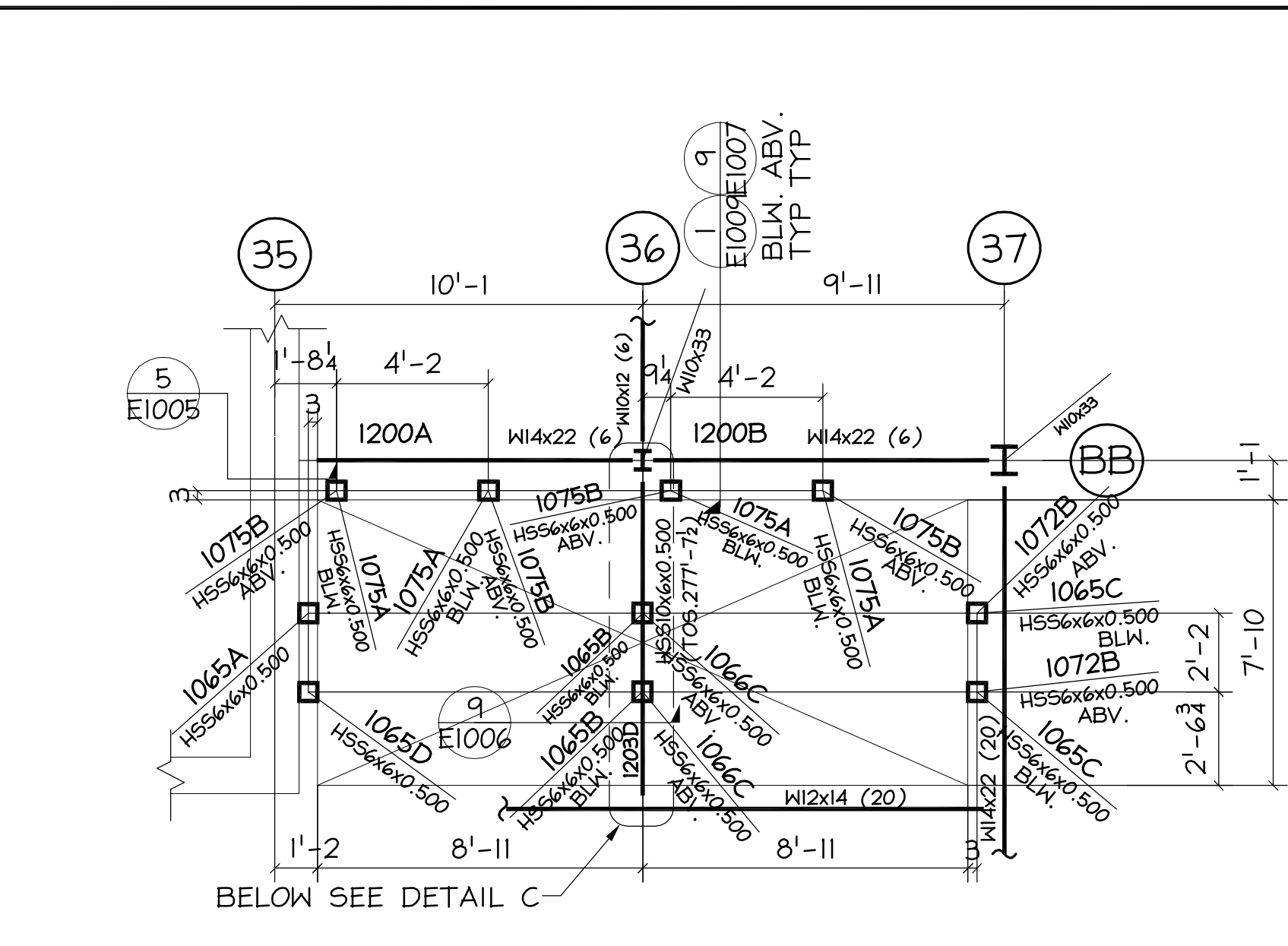


LEVEL 2 POOL/SERVICE/SPA CENTER WING FRAMING PLAN

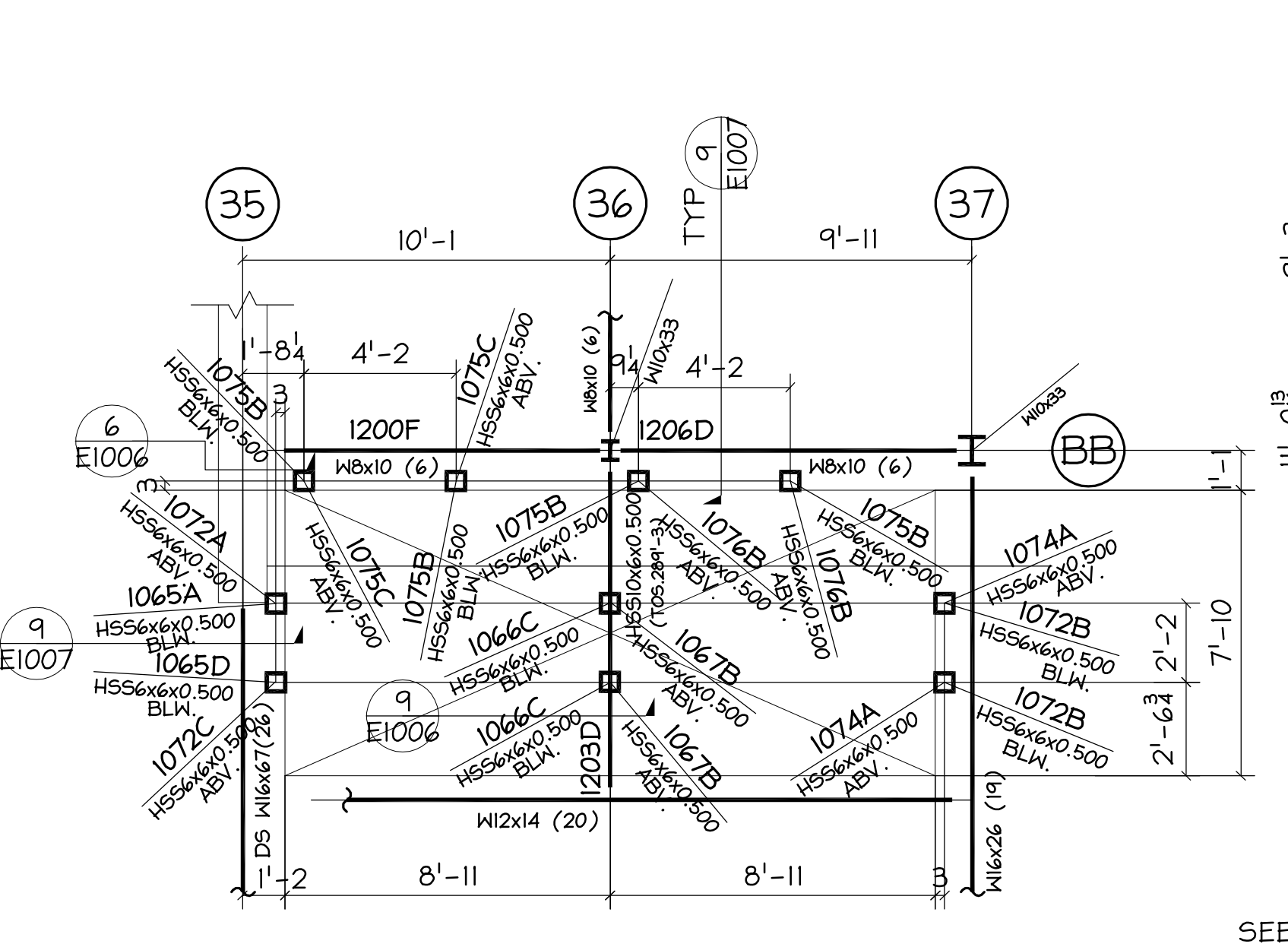
- 1). REF. S112.2
- 2). TOS. =277'-8½ UNO.
- 3). (X) INDICATES NUMBER OF ¾φ x5 HEADED SHEAR STUDS
IF NUMBER NOT INDICATED, PLACE @ 12" O.C.
- 4). c=? INDICATES AMOUNT OF POSITIVE BEAM CAMBER
- 5). L3x3x½ UNO.
- 6). DS INDICATE DRAG STRUT CONNECTIONS.



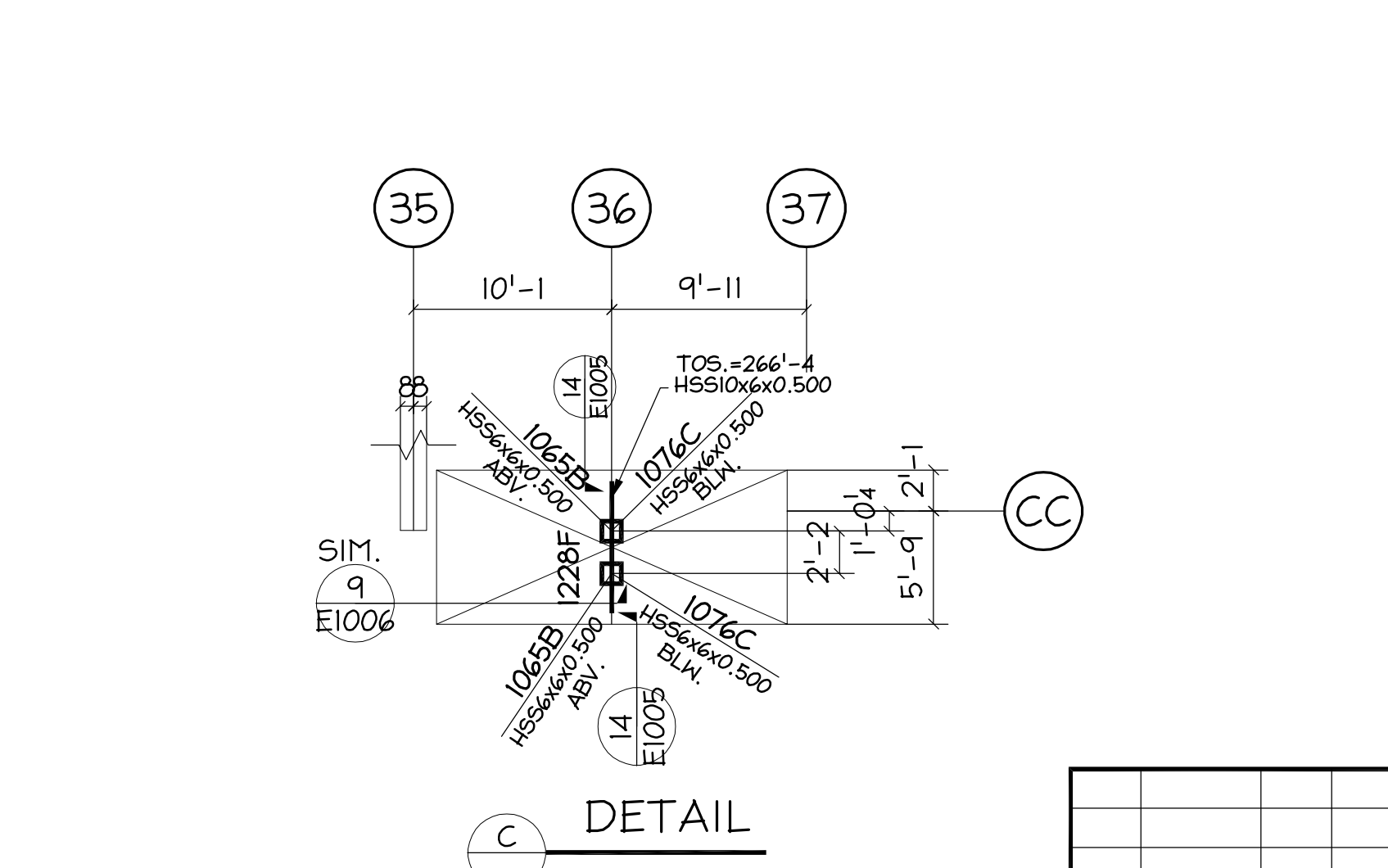
KEY PLAN



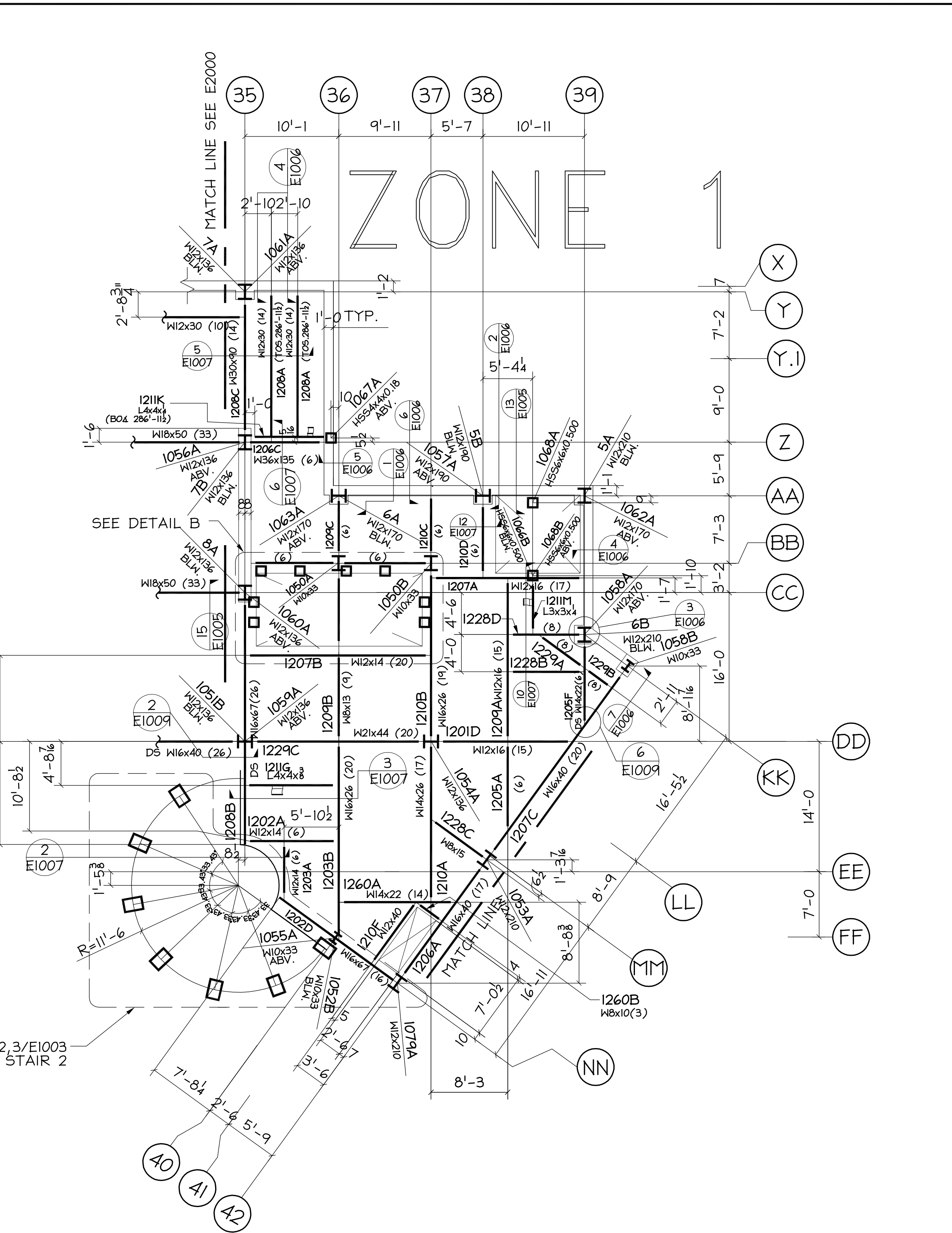
DETAIL A
1). REF S112.2
2). TOS. =277'-8½ UNO.



DETAIL B
1). REF S113.2
2). TOS. =289'-4 UNO.



DETAIL C
REF S111.2



LEVEL 3 CENTER WING FRAMING PLAN

- 1). REF. S113.2
- 2). TOS. =289'-4 UNO.
- 3). (X) INDICATES NUMBER OF ¾φ x5 HEADED SHEAR STUDS
IF NUMBER NOT INDICATED, PLACE @ 12" O.C.
- 4). c=? INDICATES AMOUNT OF POSITIVE BEAM CAMBER
- 5). W8x10 UNO.
- 6). SPLICE FOR WF COL. SEE DETAIL 8,15/E1007
- 7). DS INDICATE DRAG STRUT CONNECTIONS.

| | | | | | | | |
|--|---------|----|---|------------------------|------------|------|--|
| <p>VERIFICATION OF DIMENSIONS, DETAILS, AND ETC. ARE REQUESTED WHERE INDICATED. IF EACH VERIFICATION IS NOT NOTED OTHERWISE, IT WILL BE ASSUMED TO BE CORRECT AS SHOWN</p> | | | | <p>FOR FABRICATION</p> | | | |
| I | 6/16/08 | GA | FOR FIELD USE | FOR FABRICATION | | | |
| B | 5/30/08 | WT | FOR APPROVAL | FOR FABRICATION | | | |
| A | 1/15/08 | GA | FOR APPROVER REVIEW TO CONFIRM OR PROVIDE NOTED ITEMS | FOR PURCHASING | | | |
| REV | DATE | BY | DESCRIPTION | FOR APPROVAL | DWG STATUS | DATE | |

| | | | | | |
|---|--|---------------------------------|--|--|--|
| <p>SPRINGBROOK PROPERTIES THE ALLISON 2500 N. SPRINGBROOK ROAD, NEWBERG, OR</p> | | <p>ENGR: KGA CONTR: LCL</p> | | <p>ADI / ANGLE DETAILING, INC. ADI JOB# 31-028-001</p> | |
| <p>COLUMBIA WIRE & IRON WORKS 5555 N. Channel Portland, Ore. 97217 www.cwiil.com/503-286-6600</p> | | | | <p>DRAWN BY: LX & ZJ CHK'D BY: CWL JOB NO: 31-028-001 DWG. NO: E1000</p> | |

J:\COLUMBIA_WIRE_AND_IRON\31-028-001\SPRINGBROOK\PLANS\E1000.DWG. 12/31/08 9:25am FORD mellisa.movsky