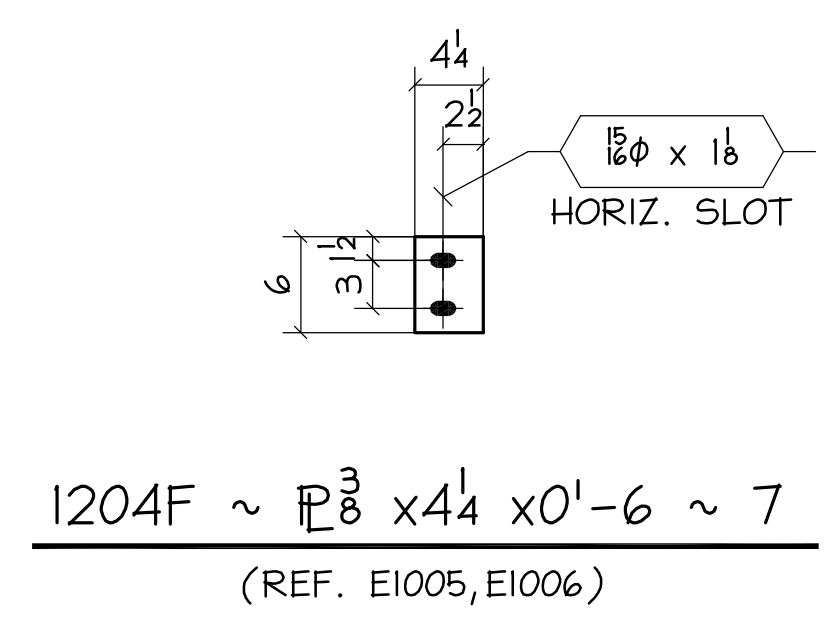
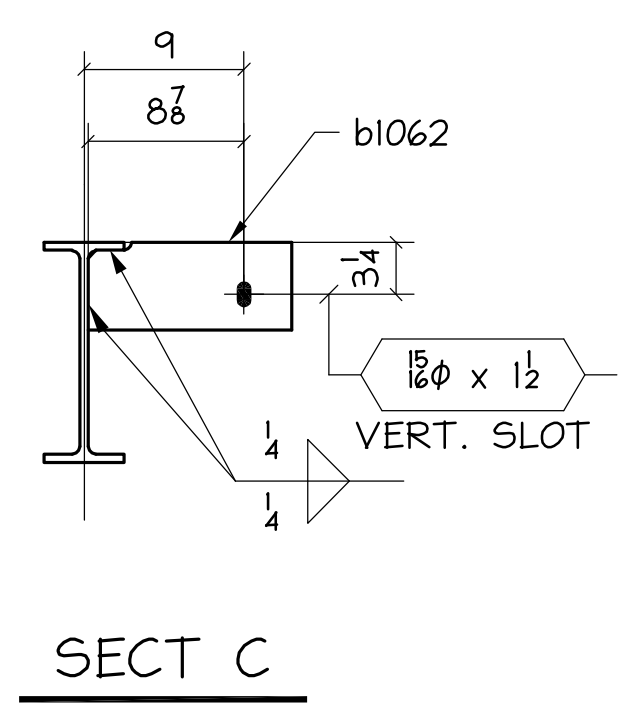
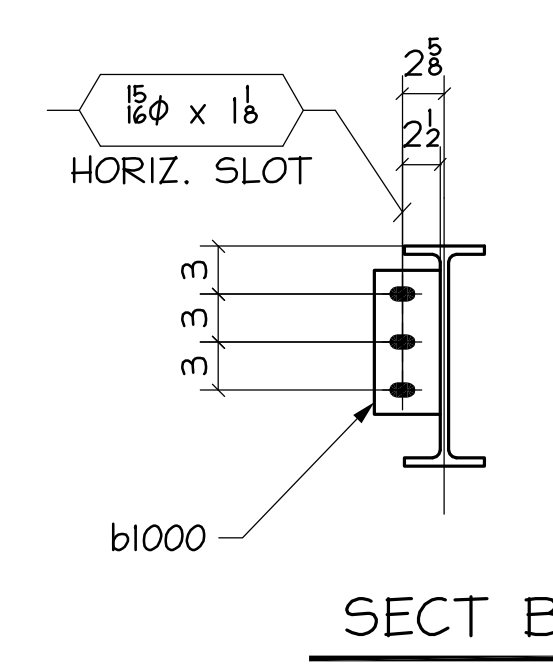
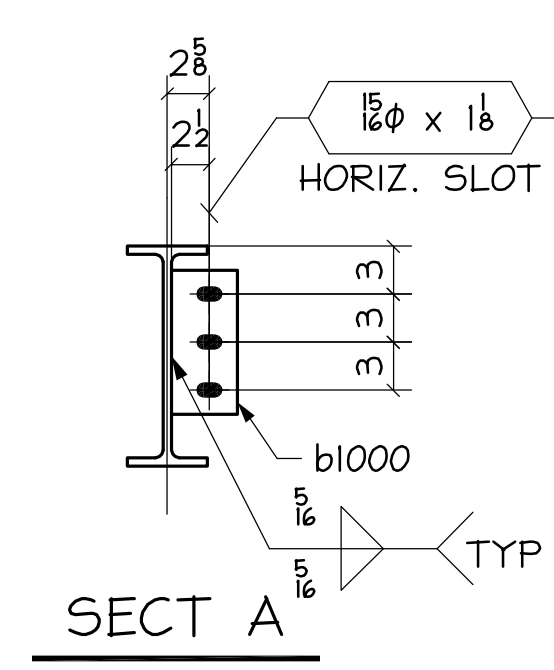
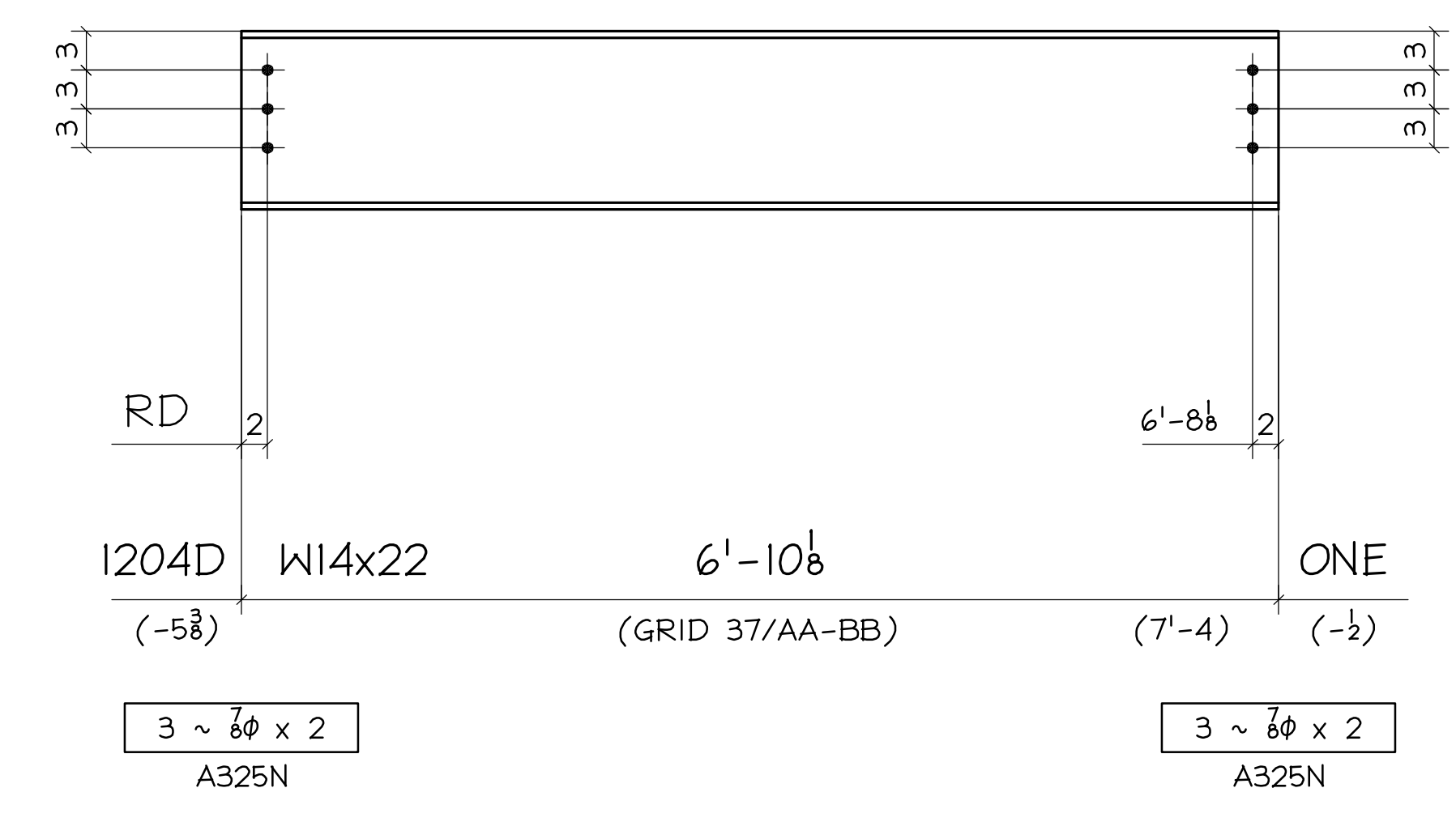
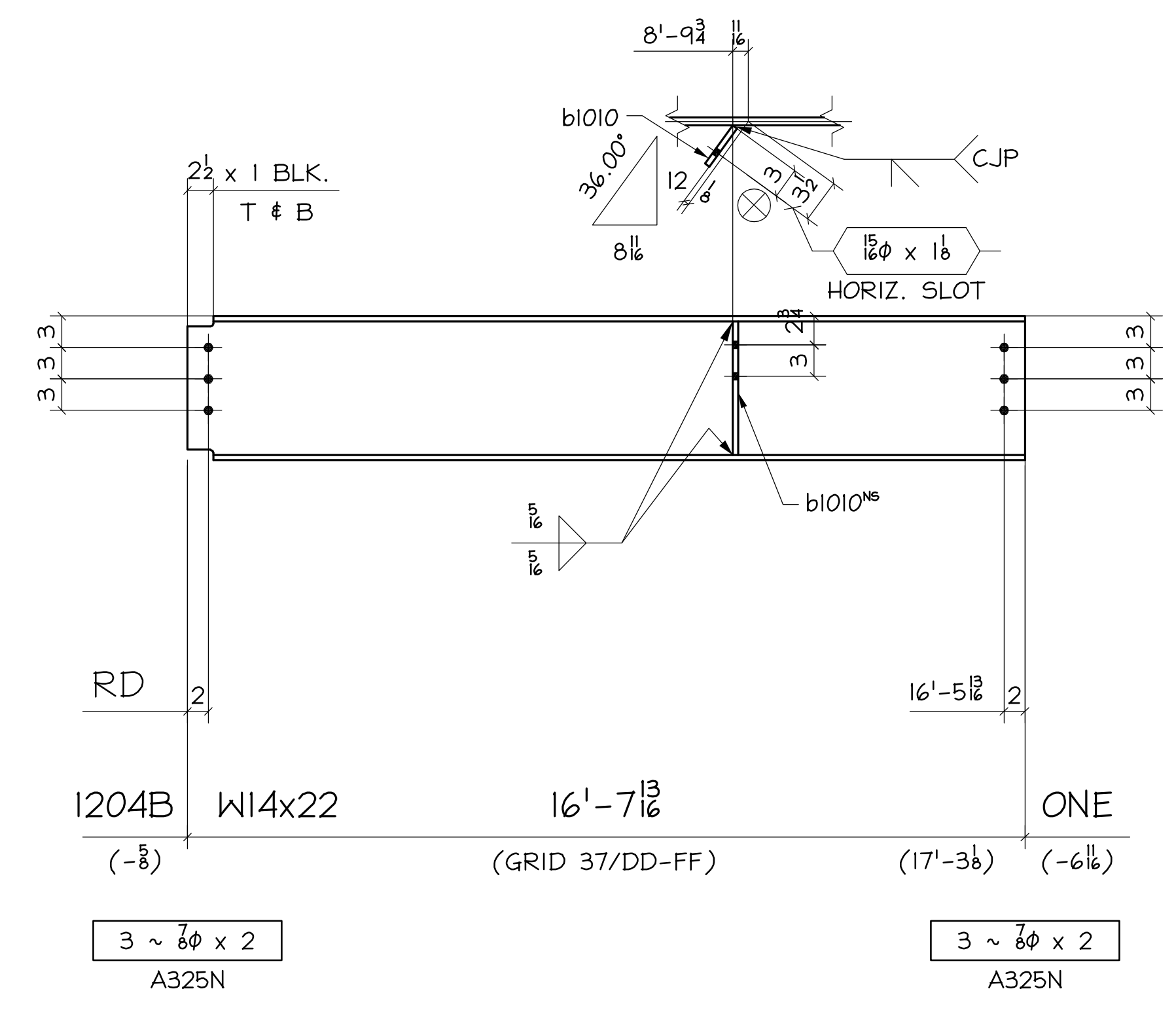
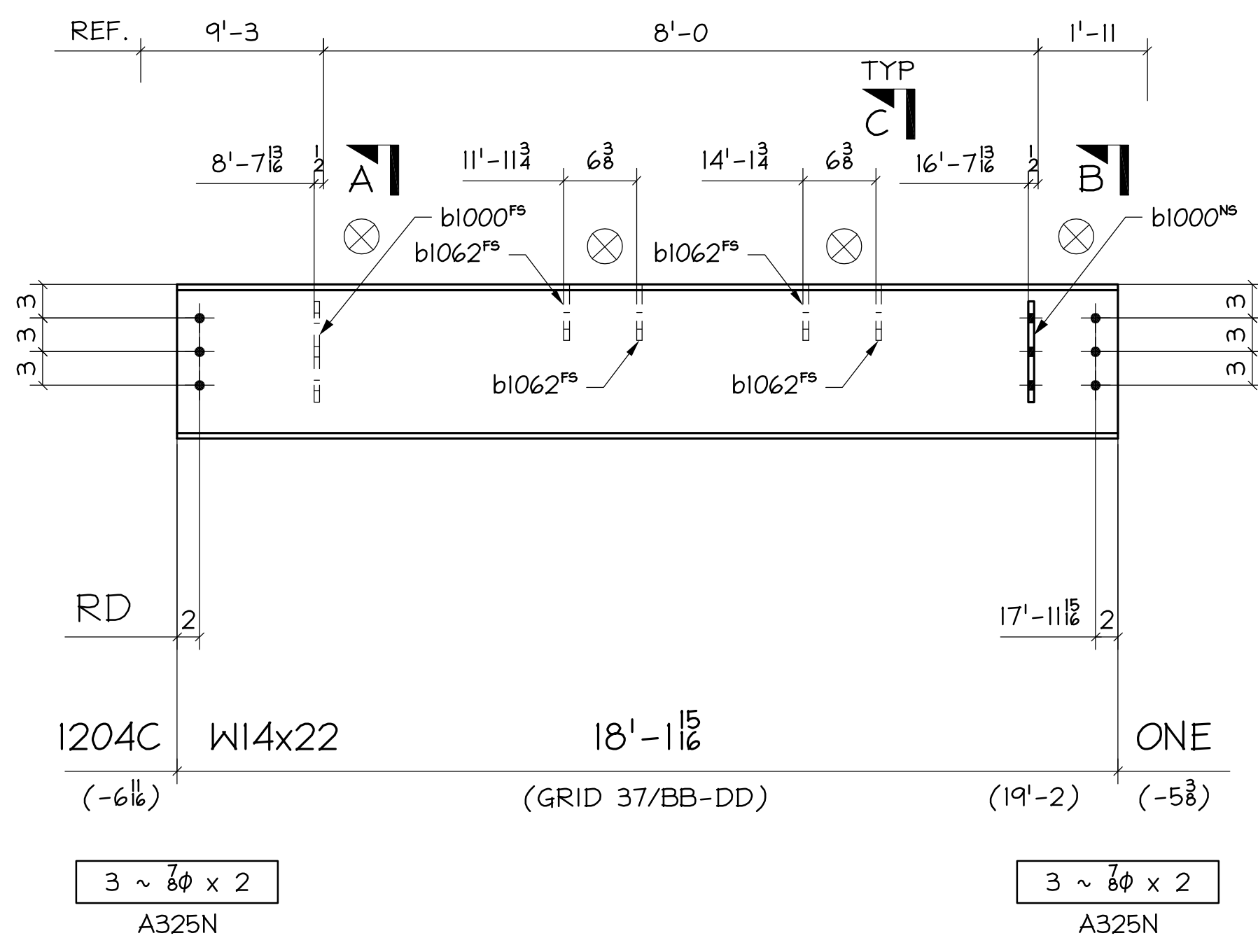
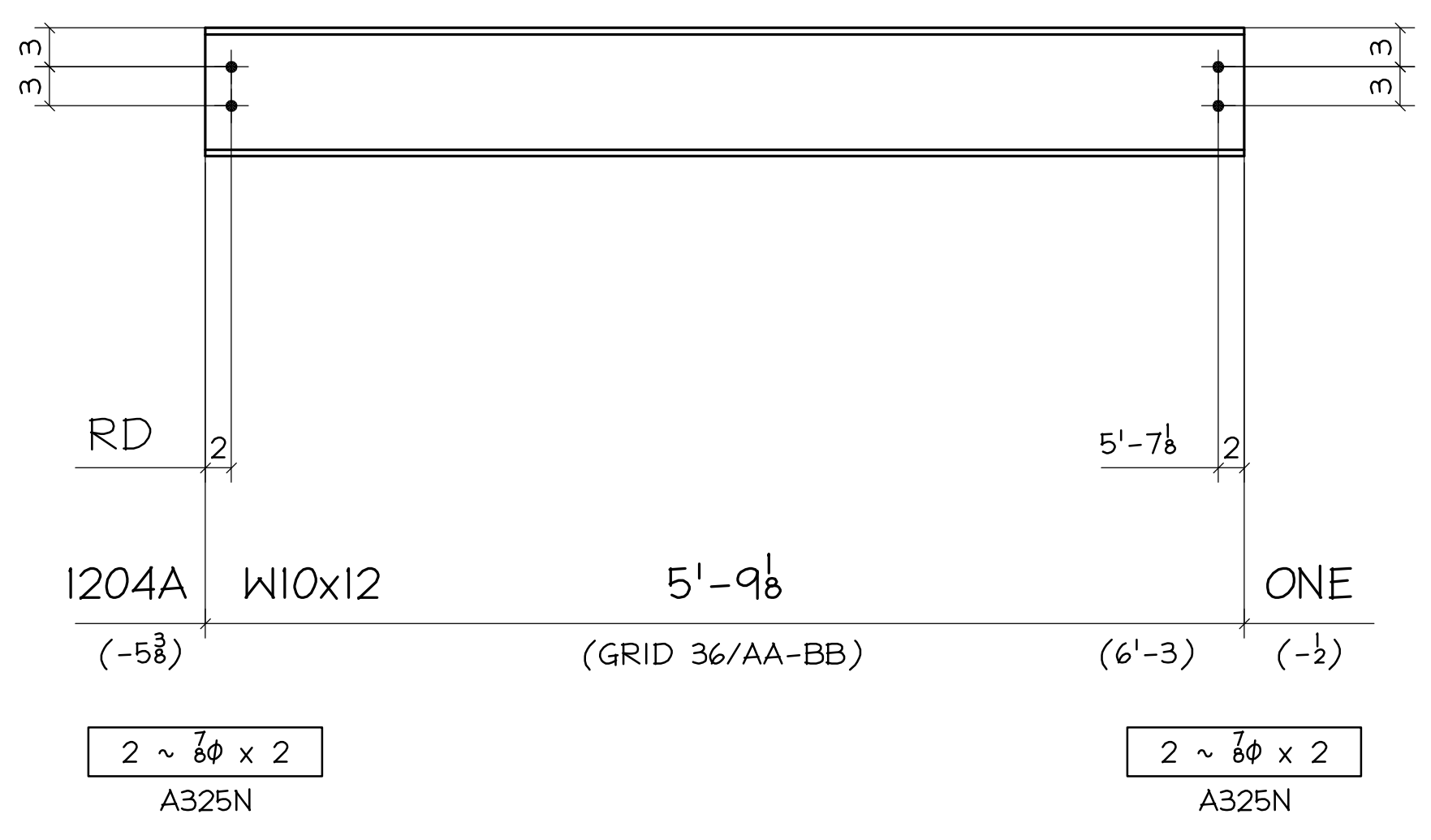


J:\COLUMBIA_WIRE_AND_IRON\31-028-001(SPRINGBROOK)SHOPS\1204.DWG 12/11/08 9:39am FCRD melissa.moody



Z / QUAN	
1204A / 1 / 1	
Z / QUAN	
1204B / 1 / 1	
Z / QUAN	
1204C / 1 / 1	
Z / QUAN	
1204D / 1 / 1	
Z / QUAN	
1204F / 1 / 7	

BILL OF MATERIAL

NO. TO SHIP	SHIP MARK	TOTAL No	PC MARK	DESCRIPTION	LENGTH		REMARKS	ADV. BILL	WEIGHT	
					FT.	IN.			UNIT	TOTAL
ONE	1204A			W10x12	5	9 1/8				
ONE	1204B			W14x22	16	7 1/2				
		1	b1010	3/8 x 4 1/2	1	0 1/2				
ONE	1204C			W14x22	18	11 1/2				
		2	b1000	3/8 x 4 1/2	0	9				
		4	b1062	3/8 x 5 1/2	0	11 1/2				
ONE	1204D			W14x22	6	10 1/8				
7	1204F			3/8 x 4 1/2	0	6				
		22		FIELD BOLTS 3/8 A325N W/N # W	0	2				

FABRICATION NOTES:
 HOLES UNO: 1/2
 WELD: E70XX (LH)
 REF DWG: E1000 E1005
 MATERIAL UNO: A36 W=A992 GR50
 HSS=A500 GRB
 PAINT: NONE

NOTES:
 VERIFICATION OF DIMENSIONS, DETAILS, AND ETC. ARE REQUESTED, WHERE INDICATED. IF EACH VERIFICATION IS NOT NOTED OTHERWISE, IT WILL BE ASSUMED TO BE CORRECT AS SHOWN.

REV	DATE	BY	DESCRIPTION	DWG STATUS	DATE
I	6/12/08	GA	FABRICATION	FOR FABRICATION	
A	5/30/08	WT	For Approval	FOR PURCHASING	

SPRINGBROOK PROPERTIES
 THE ALLISON
 2500 N. SPRINGBROOK ROAD, NEWBERG, OR

ENGR: KGA
 CONTR: LCL

COLUMBIA WIRE & IRON WORKS
 5555 N. Channel Portland, Ore. 97217
 www.cwil.com/503-286-6600

DRAWN BY: LX # BYY
 CHKD BY: ZJ
 JOB NO: 31-028-001
 DWG. NO: 1204