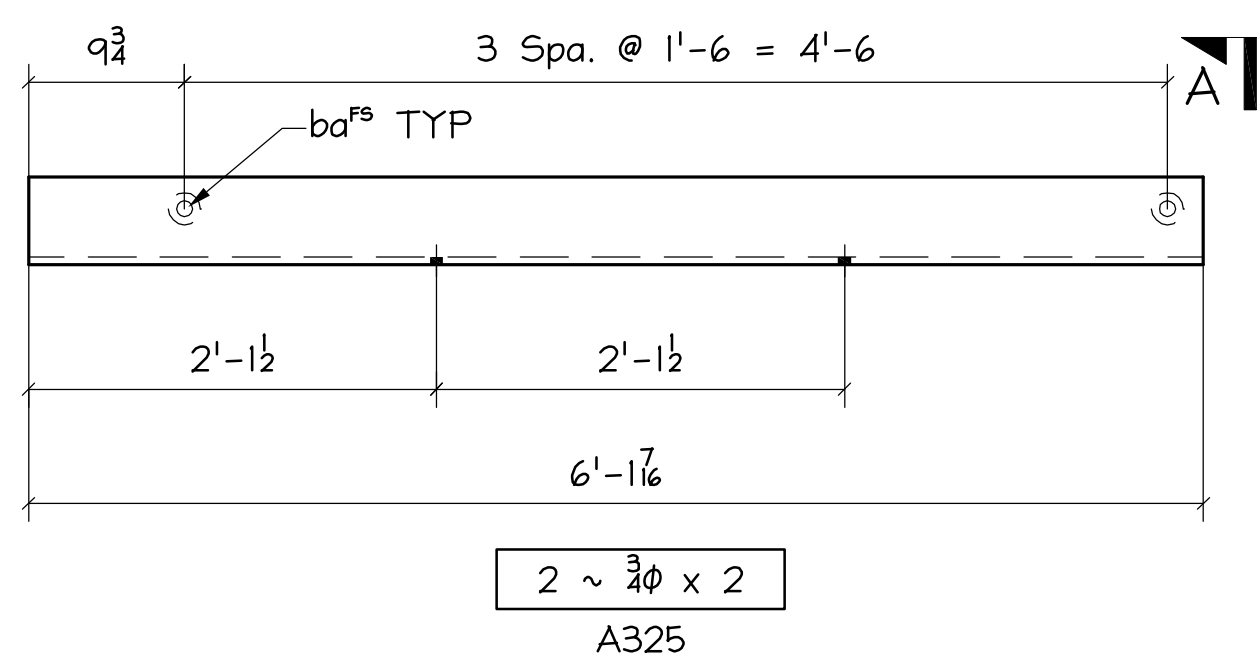
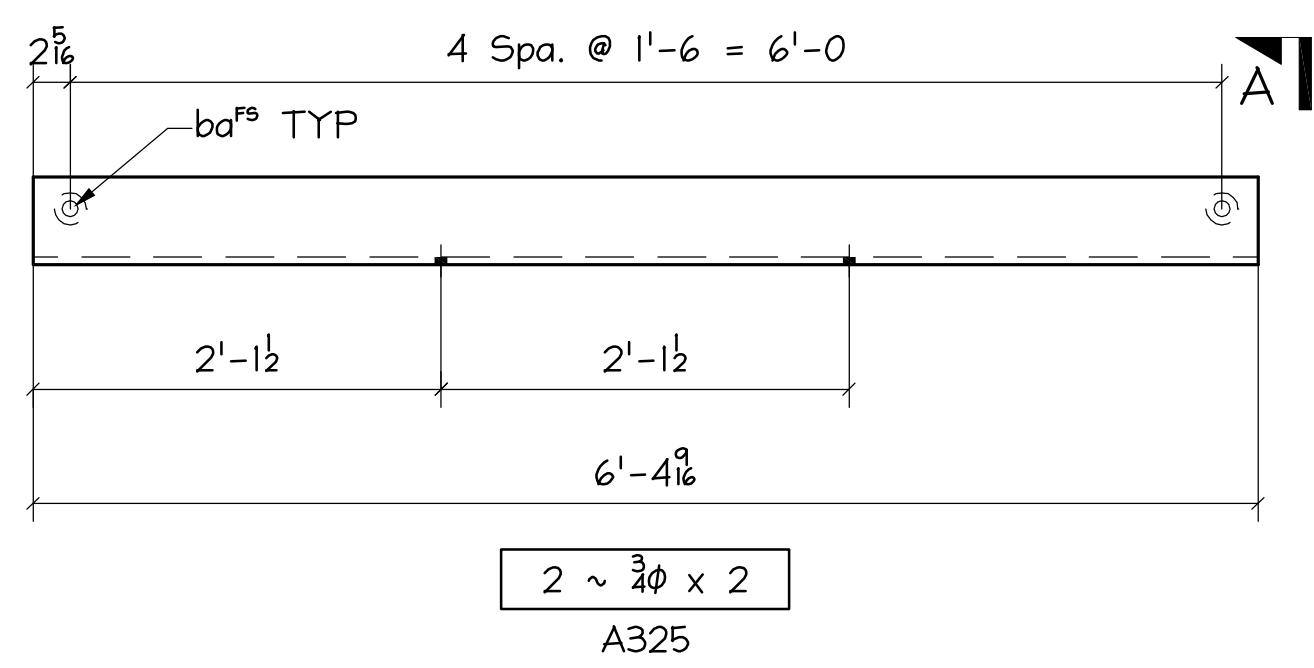


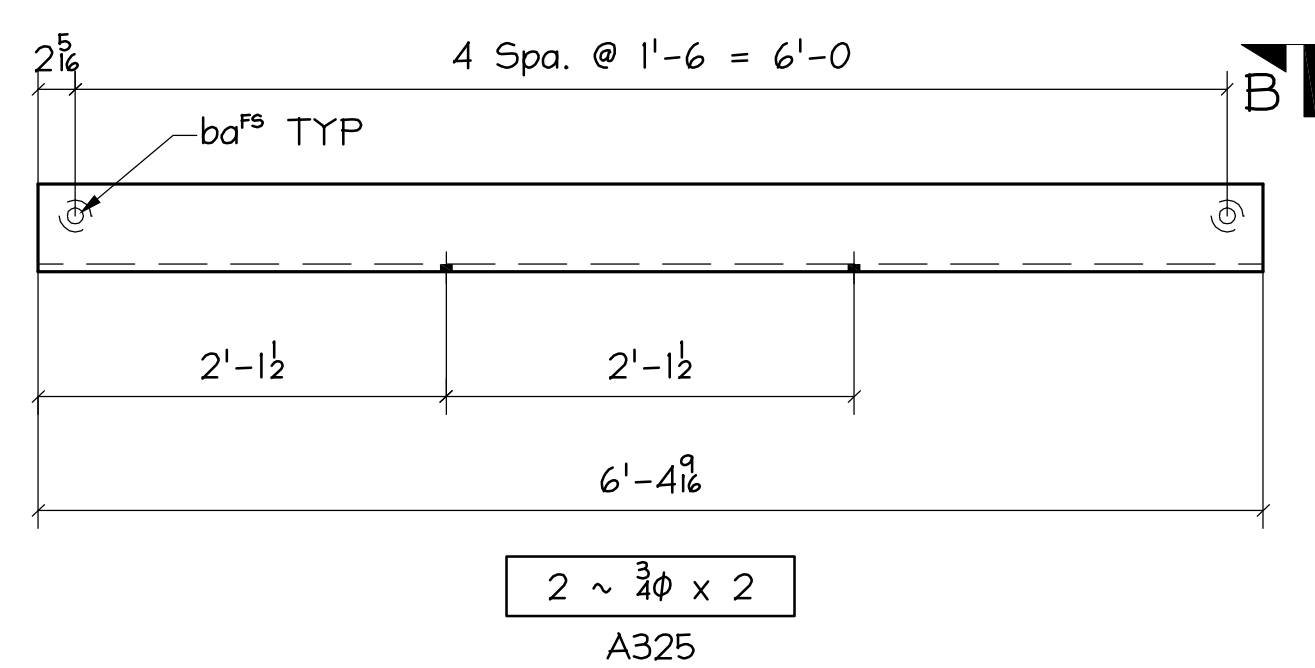
J:\2007-617\XOL-SUBMITTALS-RECORD-V08-MEB-PAGE-BRANNING-EXAMPLES\NORTH-CREEK-PP3\343.DWG 1/6/09 2:43pm F080 medusa.mxd



243A ~ P⁴ x 13³/₈ x 6'-1⁷/₁₆ ~ ONE
(GRID 8/L.5-L.8)



243B ~ P⁴ x 13³/₈ x 6'-4¹/₈ ~ ONE
(GRID 8/L-L.5)

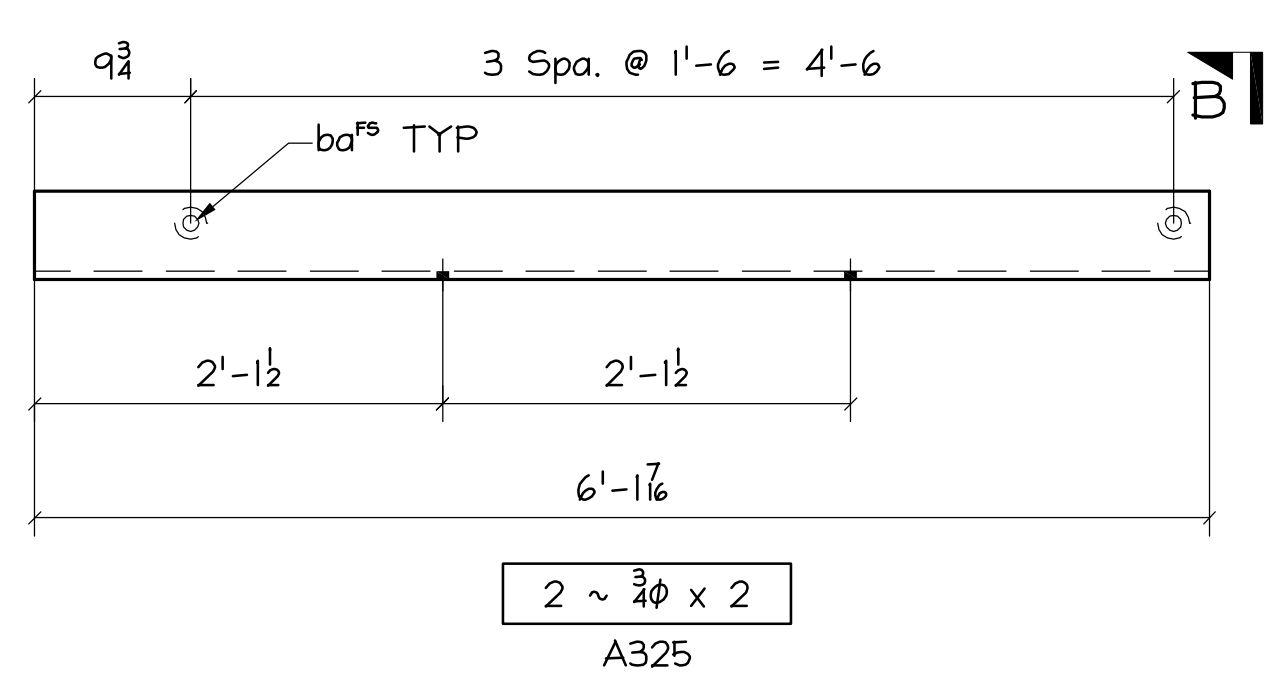


243C ~ P⁴ x 13³/₈ x 6'-4¹/₈ ~ ONE
(GRID 7/L-L.5)

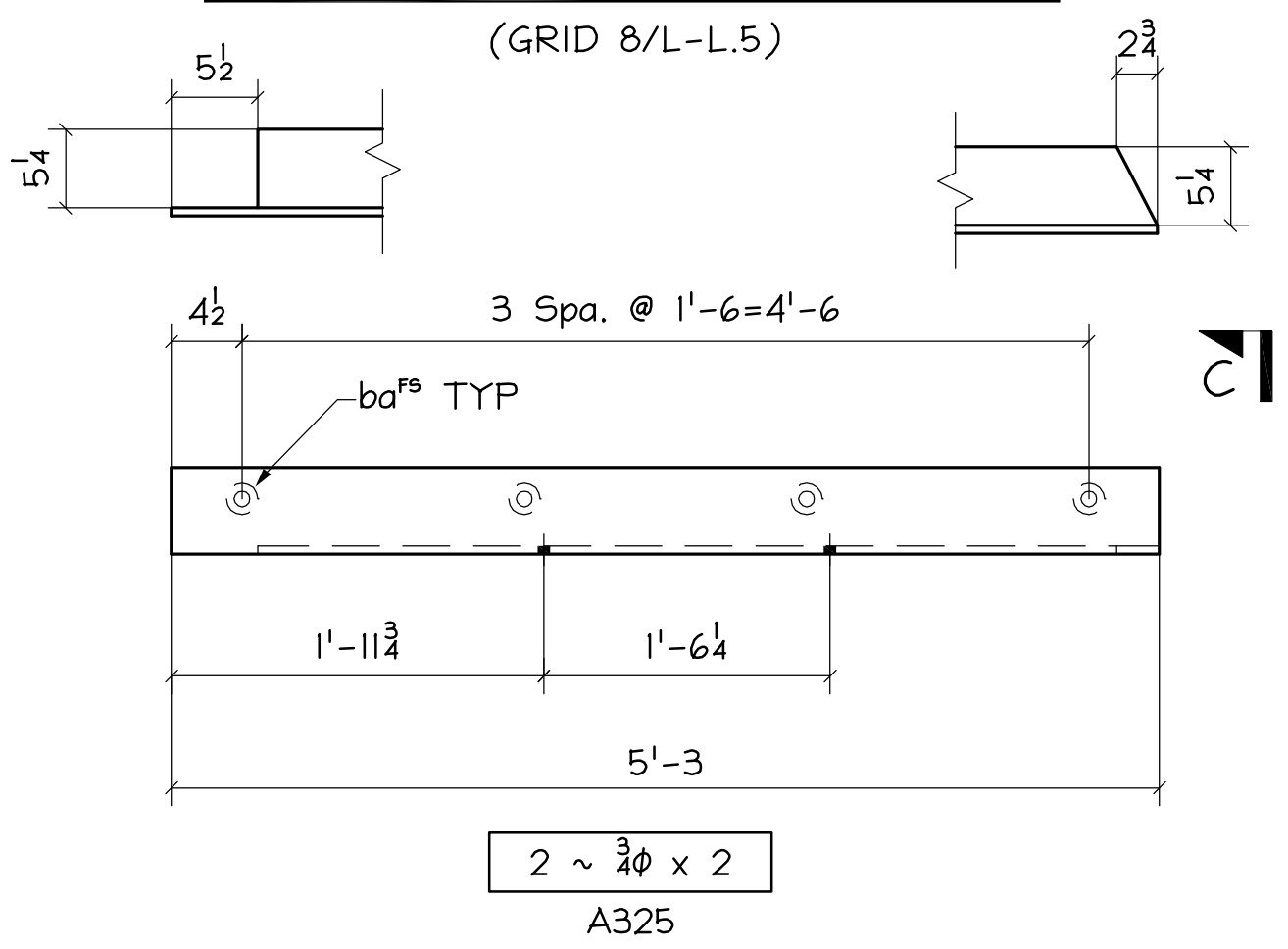
| Z / QUAN | |
|--------------|--|
| 243A / 1 / 1 | |
| Z / QUAN | |
| 243B / 1 / 1 | |
| Z / QUAN | |
| 243C / 2 / 1 | |
| Z / QUAN | |
| 243D / 2 / 1 | |

| Z / QUAN | |
|--------------|--|
| 243F / 3 / 1 | |
| Z / QUAN | |
| 243G / 2 / 1 | |
| Z / QUAN | |
| 243K / 2 / 1 | |
| Z / QUAN | |
| 243M / 2 / 4 | |
| 243M / 3 / 2 | |
| Z / QUAN | |
| 243N / 1 / 1 | |

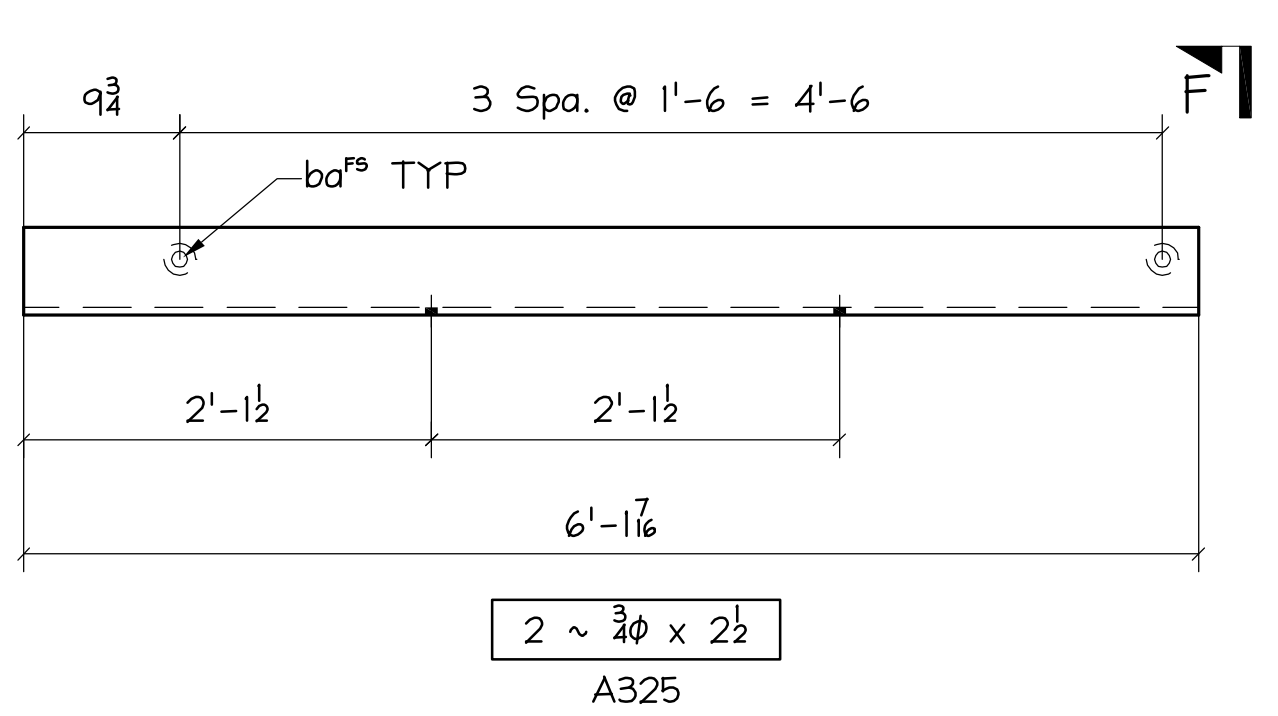
| BILL OF MATERIAL | | | | | | | | | | |
|------------------|-----------|----------|---------|---|--------|--------------------------------|---------|-----------|--------|-------|
| NO. TO SHIP | SHIP MARK | TOTAL No | PC MARK | DESCRIPTION | LENGTH | | REMARKS | ADV. BILL | WEIGHT | |
| | | | | | FT. | IN. | | | UNIT | TOTAL |
| ONE | 243A | 4 | | P ⁴ x 13 ³ / ₈ | 6 | 1 ⁷ / ₁₆ | BENT | | | |
| | | | | ba | 0 | 3 ¹ / ₂ | | | | |
| ONE | 243B | 5 | | P ⁴ x 13 ³ / ₈ | 6 | 4 ¹ / ₈ | BENT | | | |
| | | | | ba | 0 | 3 ¹ / ₂ | | | | |
| ONE | 243C | 5 | | P ⁴ x 13 ³ / ₈ | 6 | 4 ¹ / ₈ | BENT | | | |
| | | | | ba | 0 | 3 ¹ / ₂ | | | | |
| ONE | 243D | 4 | | P ⁴ x 13 ³ / ₈ | 6 | 1 ⁷ / ₁₆ | BENT | | | |
| | | | | ba | 0 | 3 ¹ / ₂ | | | | |
| ONE | 243F | 4 | | P ⁴ x 10 ² / ₂ | 5 | 3 | BENT | | | |
| | | | | ba | 0 | 3 ¹ / ₂ | | | | |
| ONE | 243G | 4 | | P ⁴ x 13 ³ / ₈ | 6 | 1 ⁷ / ₁₆ | BENT | | | |
| | | | | ba | 0 | 3 ¹ / ₂ | | | | |
| ONE | 243K | 5 | | P ⁴ x 13 ³ / ₈ | 6 | 4 ¹ / ₈ | BENT | | | |
| | | | | ba | 0 | 3 ¹ / ₂ | | | | |
| 6 | 243M | 24 | | P ⁴ x 10 ² / ₂ | 5 | 1 ⁴ / ₂ | BENT | | | |
| | | | | ba | 0 | 3 ¹ / ₂ | | | | |
| ONE | 243N | 4 | | P ⁴ x 10 ² / ₂ | 5 | 1 ⁴ / ₂ | BENT | | | |
| | | | | ba | 0 | 3 ¹ / ₂ | | | | |
| | | | | FIELD BOLTS | | | | | | |
| | | 12 | | 3/8 A325 W/N | 0 | 2 | | | | |
| | | 16 | | 3/8 A325 W/N | 0 | 2 ¹ / ₂ | | | | |



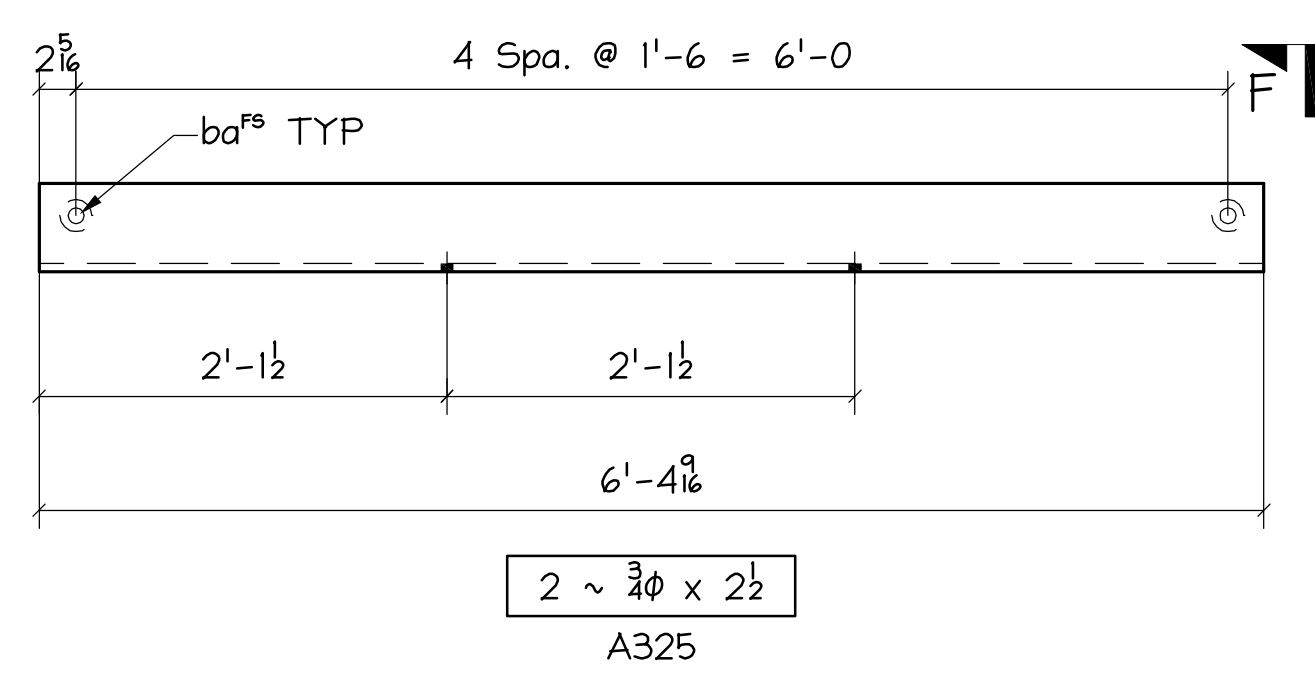
243D ~ P⁴ x 13³/₈ x 6'-1⁷/₁₆ ~ ONE
(GRID 7/L.5-L.8)



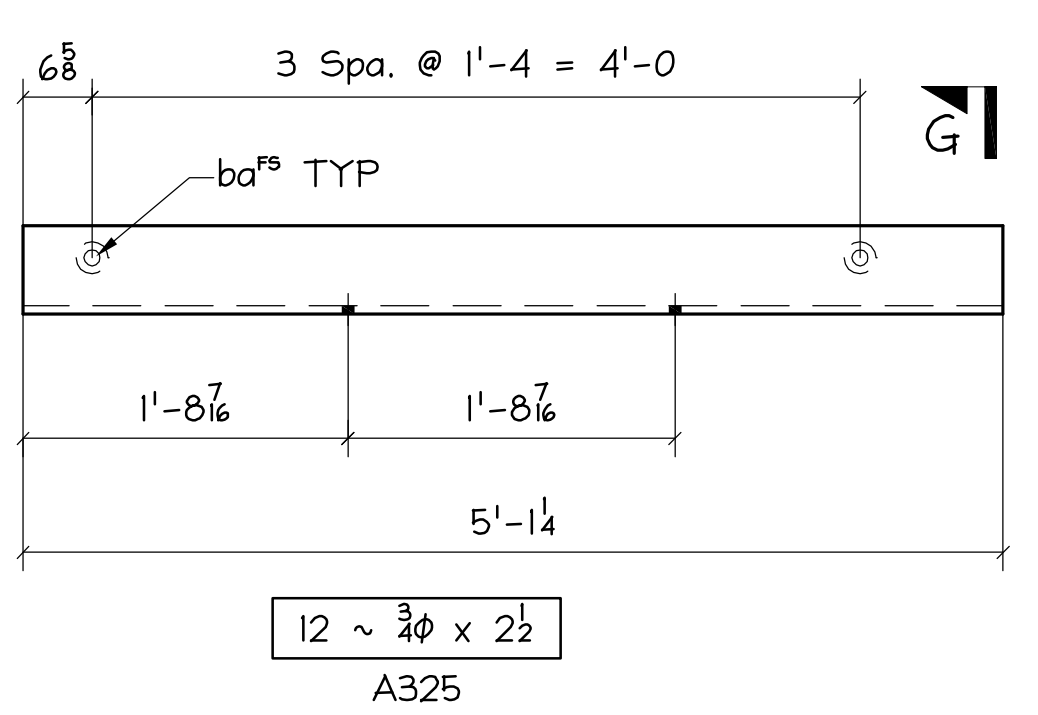
243F ~ P⁴ x 10²/₂ x 5'-3 ~ ONE
(GRID E.1-F.2/1)



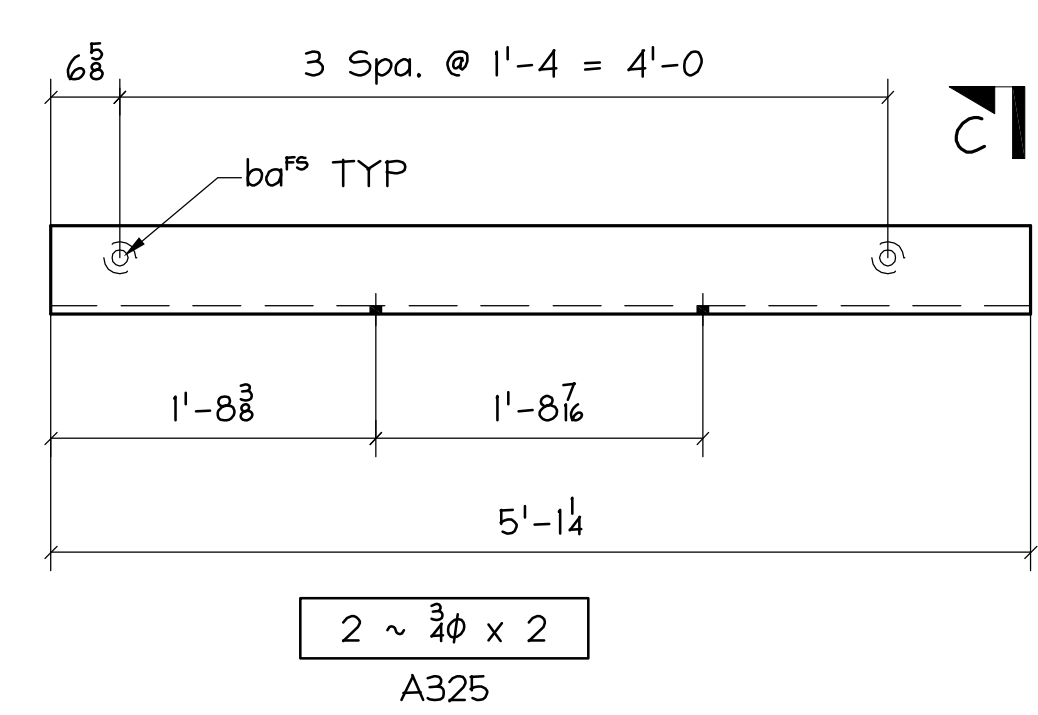
243G ~ P⁴ x 13³/₈ x 6'-1⁷/₁₆ ~ ONE
(GRID 6/L.5-L.8)



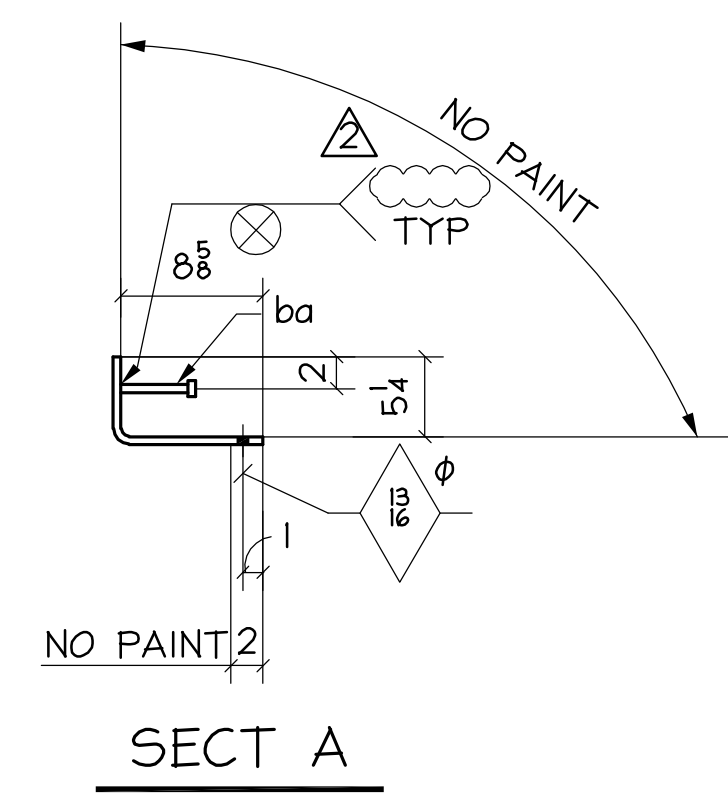
243K ~ P⁴ x 13³/₈ x 6'-4¹/₈ ~ ONE
(GRID 6/L-L.5)



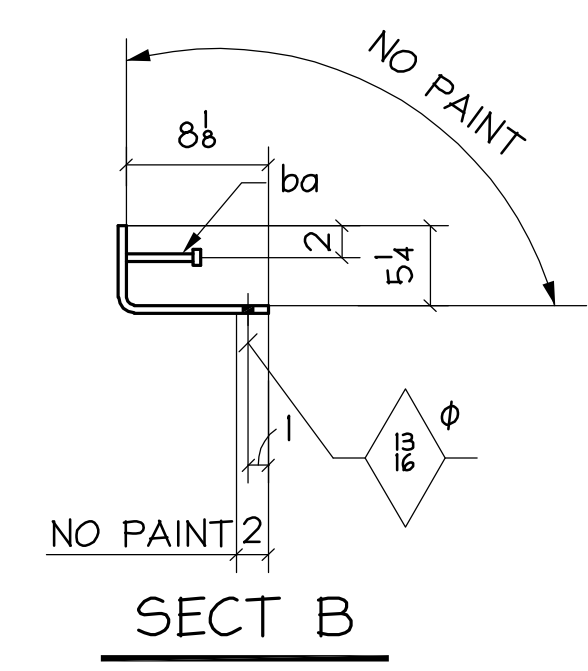
243M ~ P⁴ x 10²/₂ x 5'-1¹/₄ ~ 6
(GRID 2-6/B.6-B.9)



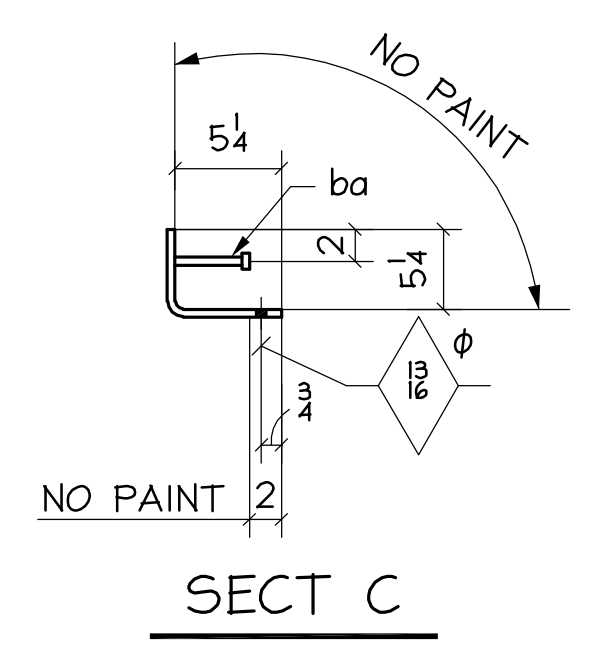
243N ~ P⁴ x 10²/₂ x 5'-1¹/₄ ~ ONE
(GRID 8/B.6-B.9)



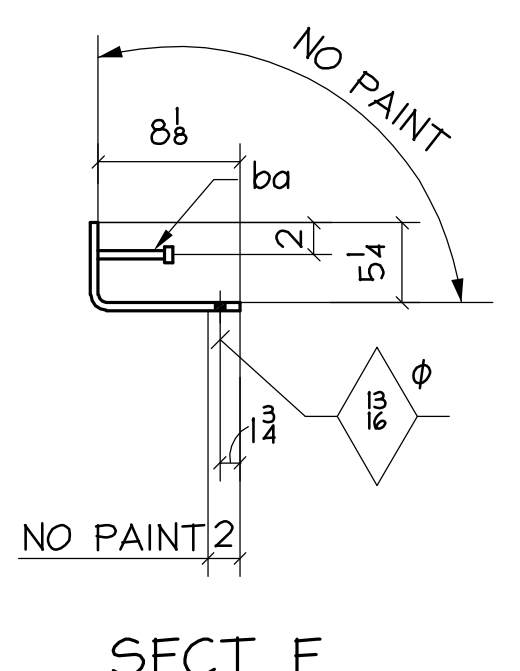
SECT A



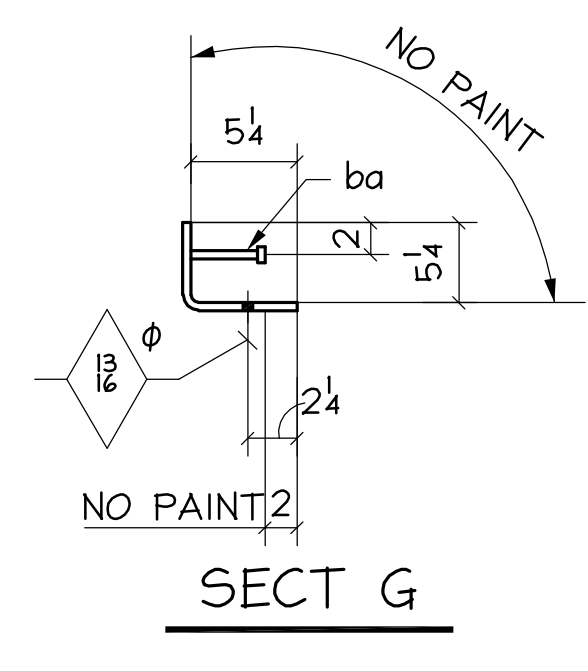
SECT B



SECT C



SECT F



SECT G

FABRICATION NOTES:
 HOLES UNO: 1/2"
 WELD: E70XX
 REF DWG: E2-SLAB EDGE
 MATERIAL UNO: A36, WF=A992
 HSS=A500 grB, PIPE=A53 grB
 PAINT: NO PAINT
 NOTES:
 VERIFICATION OF DIMENSIONS, DETAILS, AND ETC. ARE REQUESTED, WHERE INDICATED. IF EACH VERIFICATION IS NOT NOTED OTHERWISE, IT WILL BE ASSUMED TO BE CORRECT AS SHOWN.

| REV | DATE | BY | DESCRIPTION | DWG STATUS | DATE |
|-----|----------|----|-----------------------|-----------------|------|
| 2 | 2/1/08 | WT | Remove "TACK" | FOR FABRICATION | |
| 1 | 1/25/08 | WT | Issue For Fabrication | FOR PURCHASING | |
| A | 10/15/07 | WT | For Approval | FOR APPROVAL | |

**NORTHCREEK
PHASE III
DENVER, COLORADO**

ENG'R: S.A. MIRO INC. ADI / ANGLE DETAILING, INC.
 CONT'R: THE WEITZ CO. ADI JOB# 2007-617

Pikes Peak Steel
 3550 Mark Dabbling Blvd. Colorado Springs, CO 80907
 (719) 471-8811

DRAWN BY: XY CHKD BY: LEL JOB NO. 2007-15 DWG. NO. 243