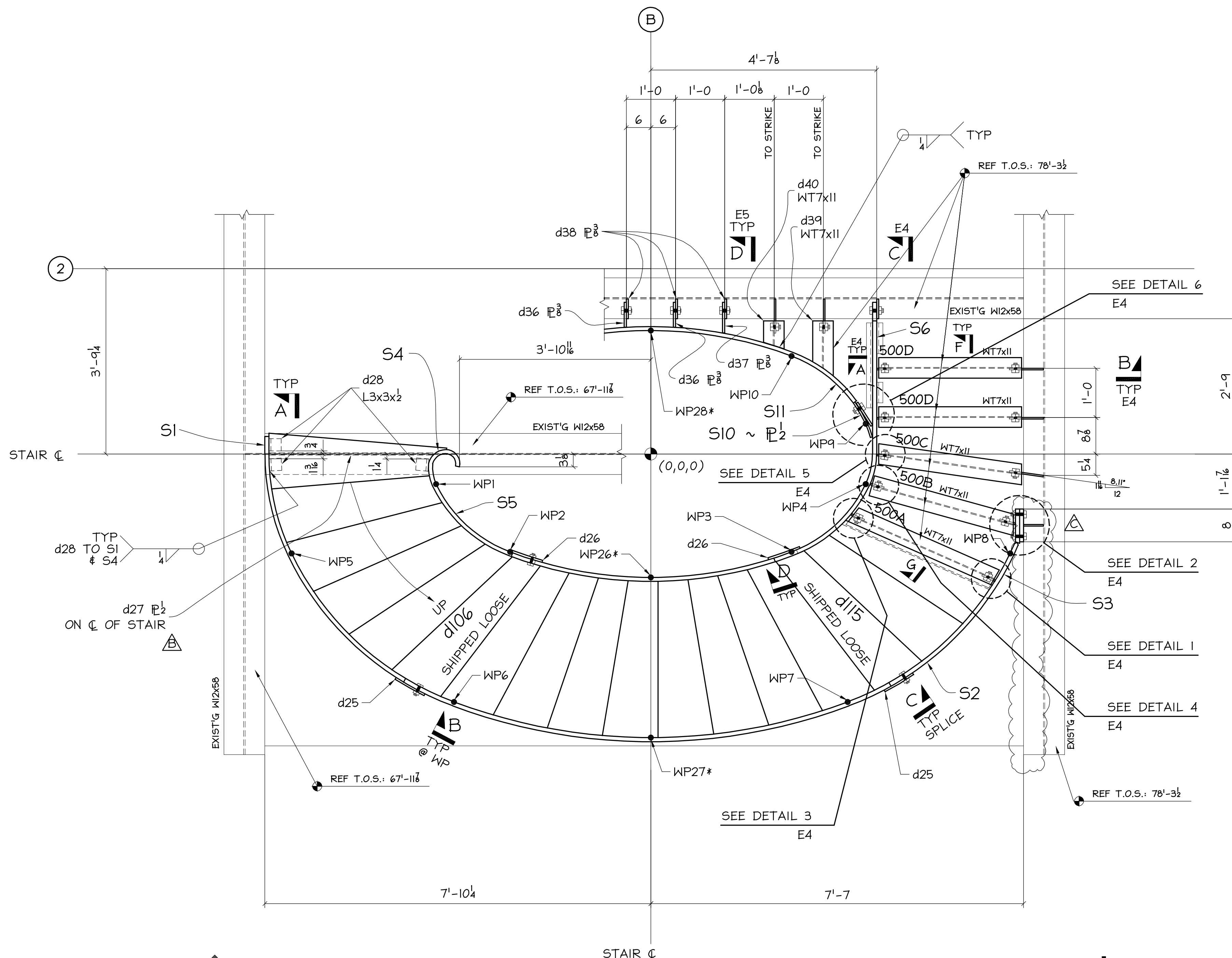



 ELEVATION VIEW

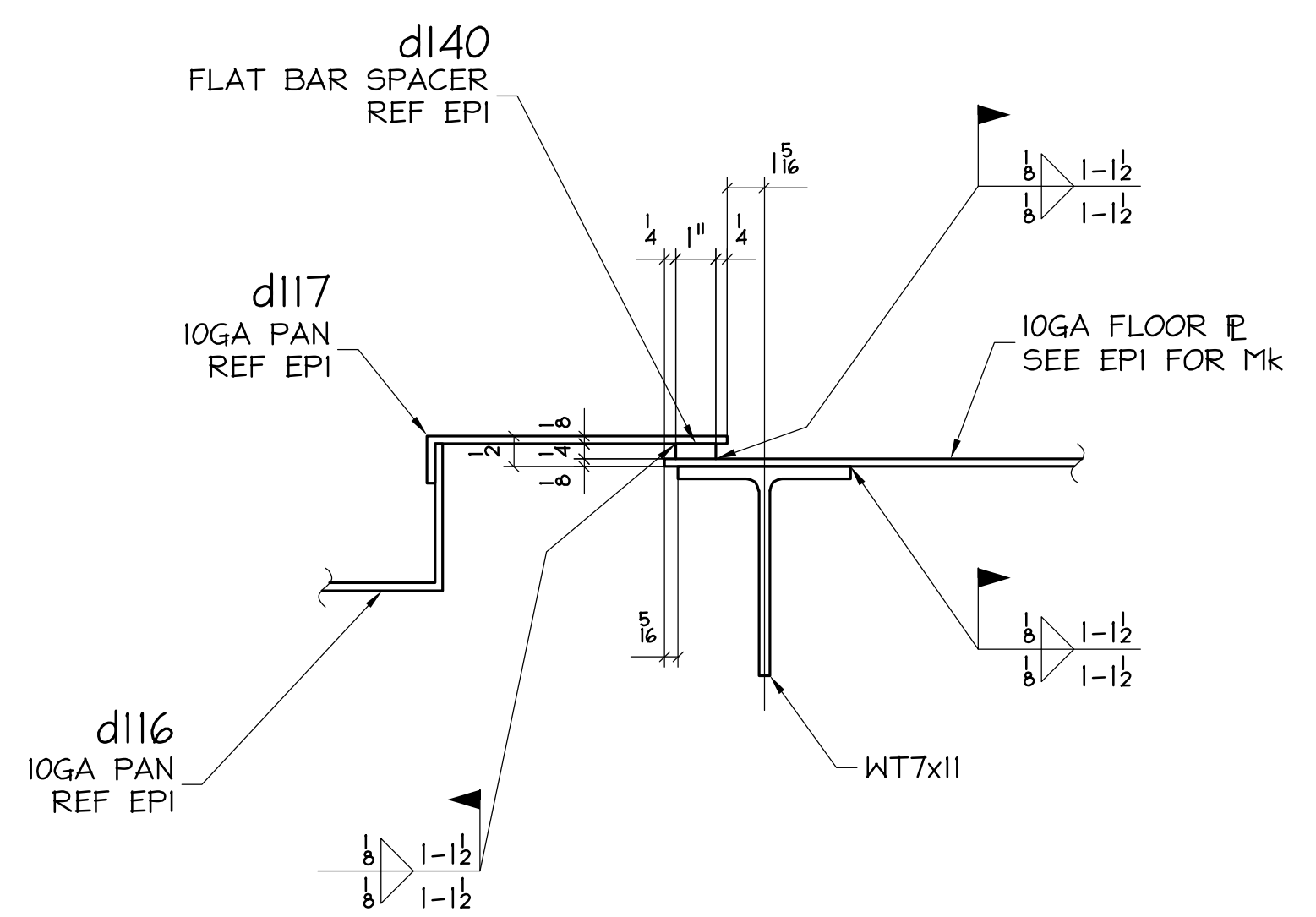
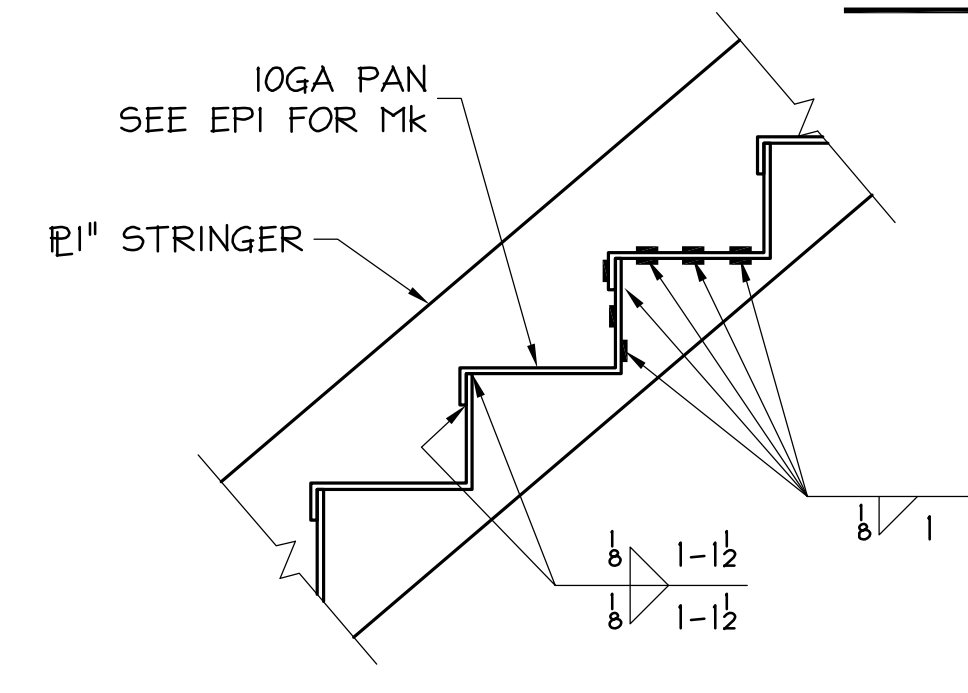
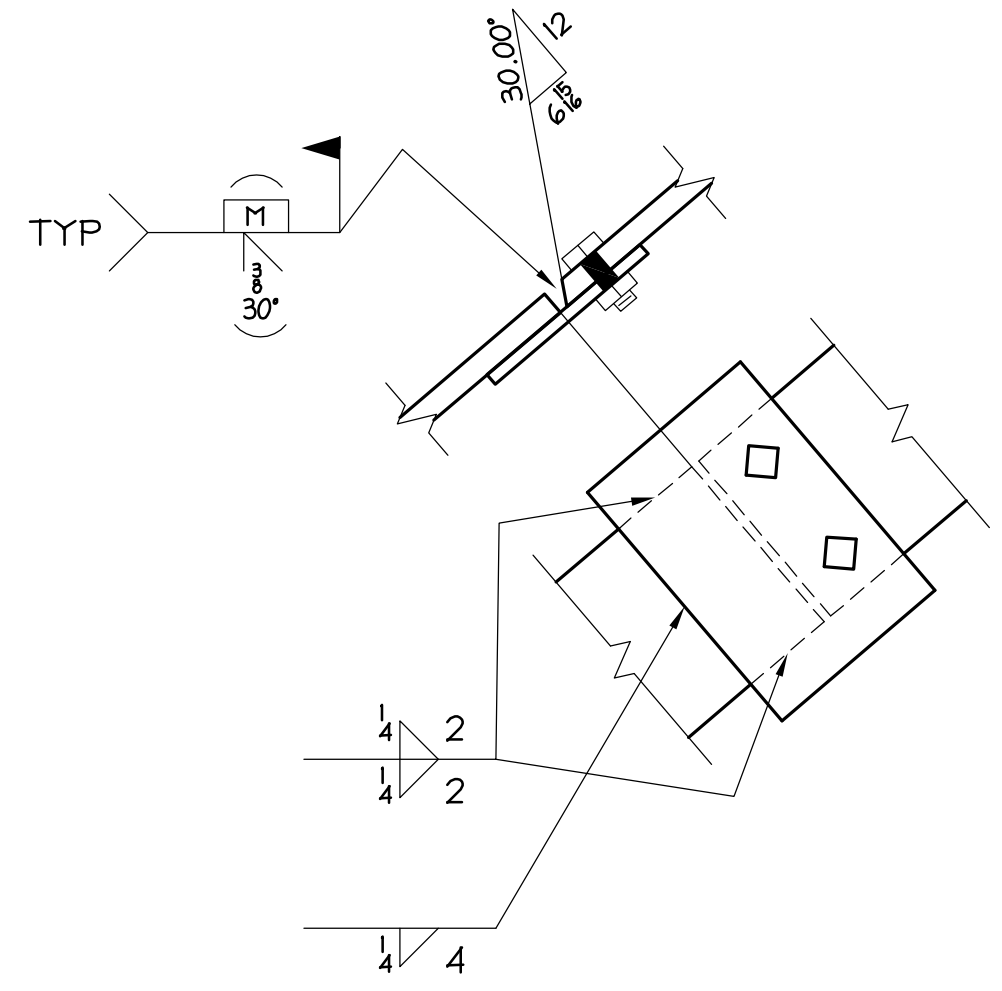
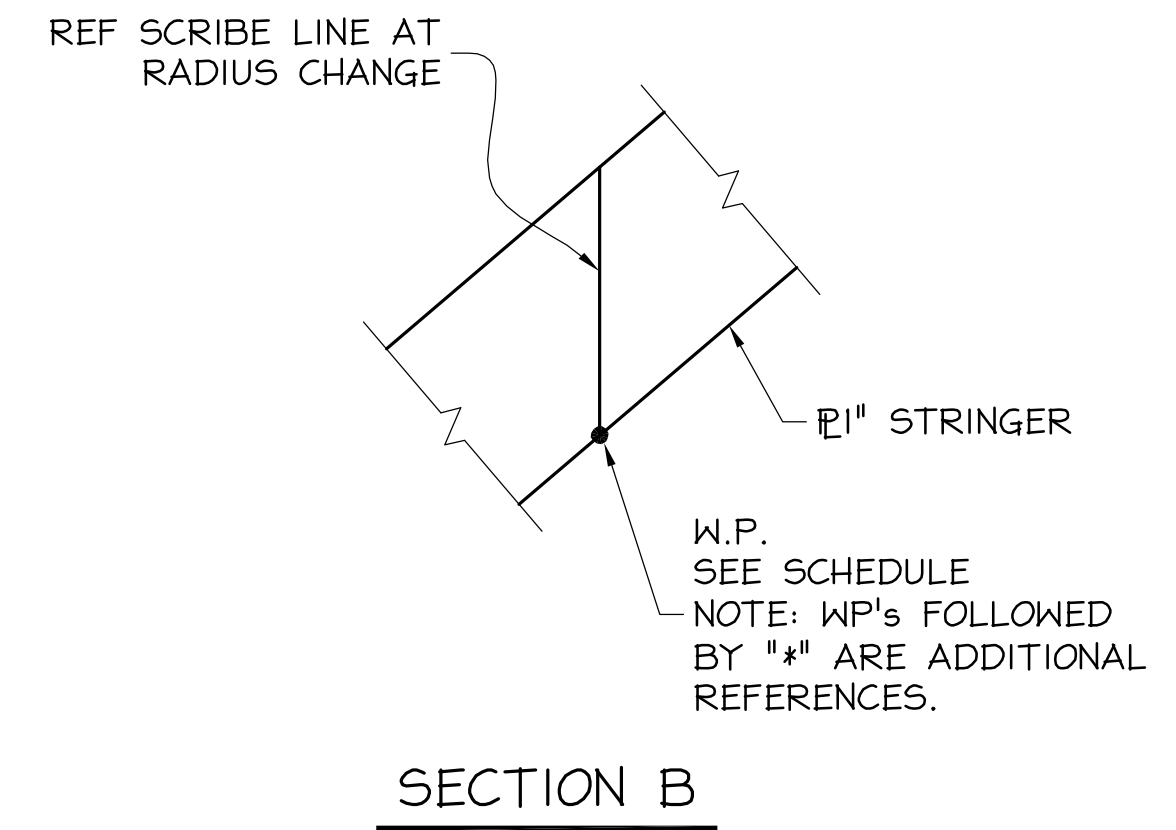
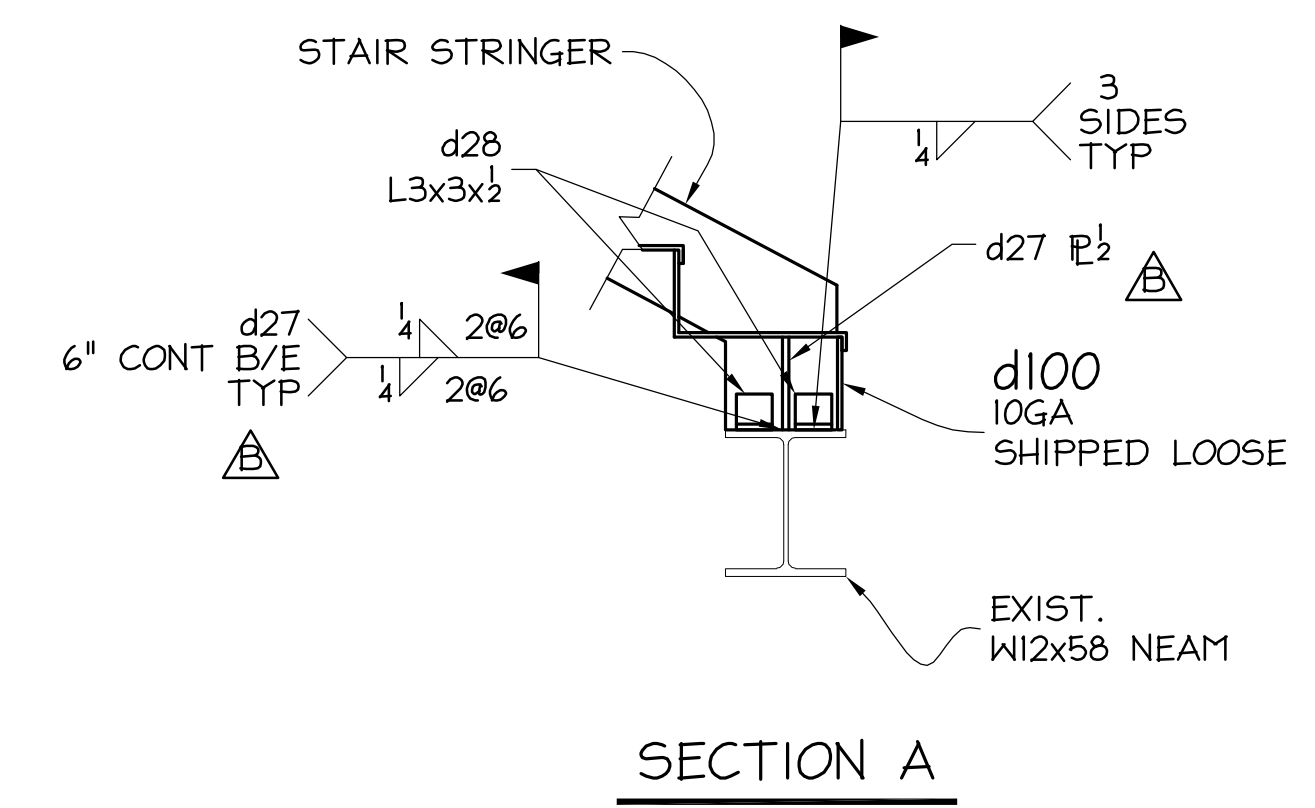
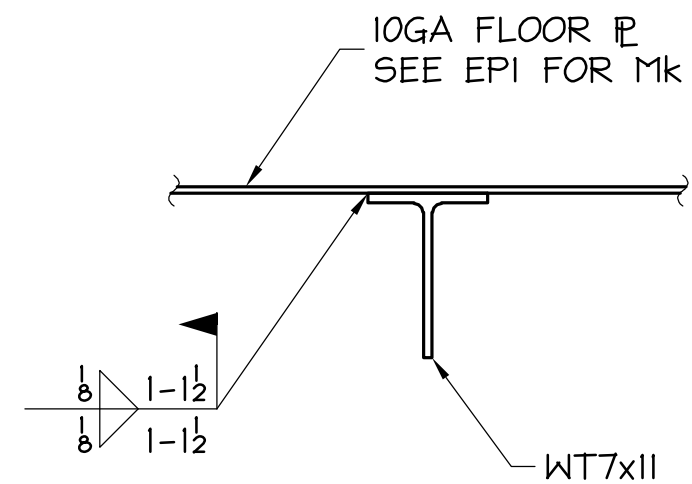
VERIFICATION OF DIMENSIONS, DETAILS, AND ETC. ARE REQUESTED WHERE INDICATED. IF EACH VERIFICATION IS NOT NOTED OTHERWISE, IT WILL BE ASSUMED TO BE CORRECT AS SHOWN

REV	DATE	BY	DESCRIPTION	DWG STATUS	DATE
A	8/6/04	ADI	ISSUED FOR APPROVAL - FAB READY		

55 East 77th Street PPA Oval Stair New York, NY	
ENGR: KPFF CONTR:	ADI / ANGLE DETAILING, INC. ADI JOB# 2004-366
COLUMBIA WIRE & IRON WORKS 5555 N. Channel Portland, Ore. 97217 www.cwil.com/503-286-6600	
DRAWN BY: GDC	CHK'D BY: GBA
JOB NO: 90-001001	DWG. NO: SE3



PLAN
FIRST TO SECOND FLOOR
REFER TO SCHEDULE
FOR W.P. x, y, z
SEE EPI FOR PAN # FLOOR
PLATE MARKS # LOCATIONS

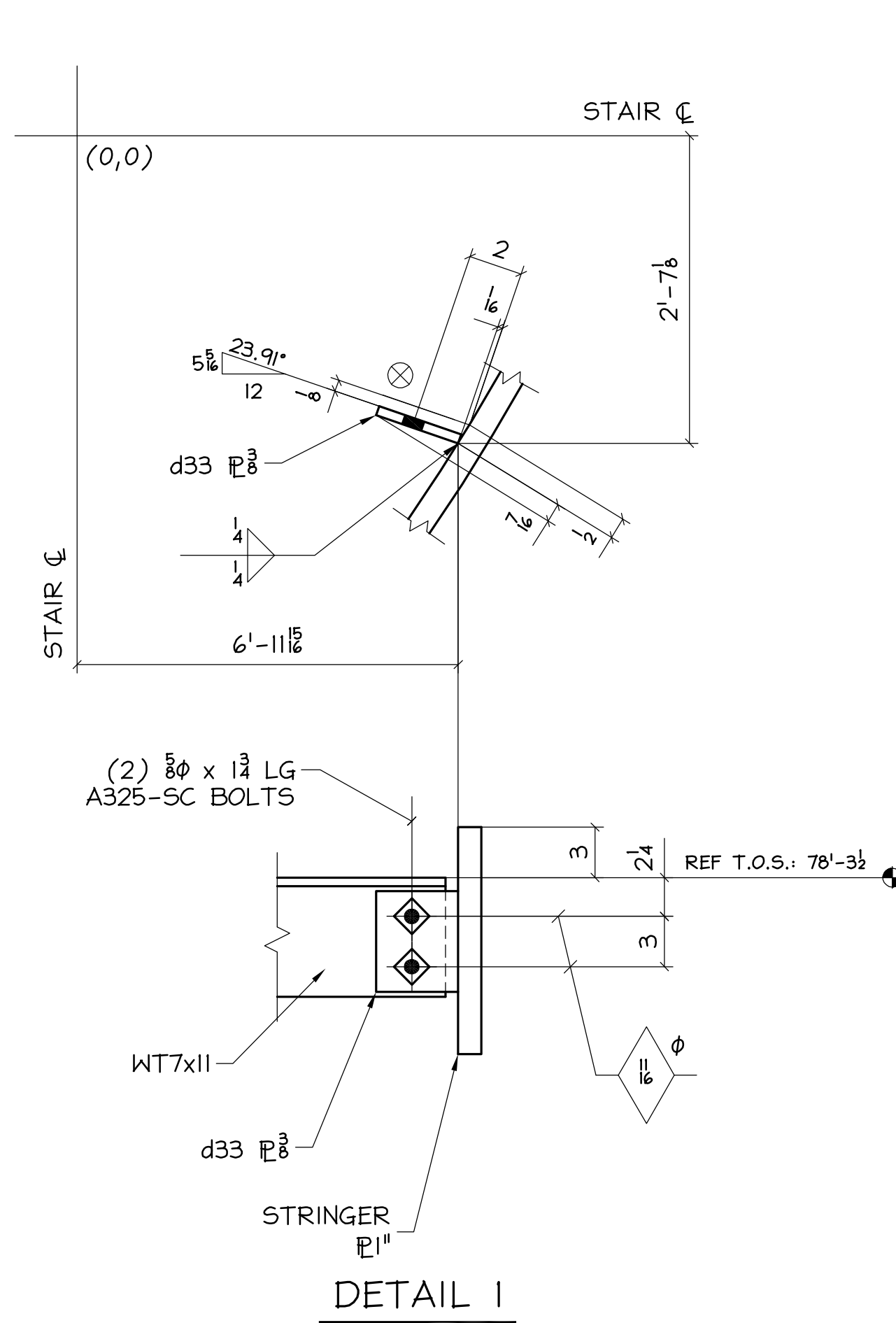


W.P. LOCATION SCHEDULE			
W.P.	X=	Y=	Z=
WP1	-4'-4 1/2"	-0'-7 3/8"	0'-10 1/4"
WP2	-2'-10 3/8"	-1'-11 1/8"	2'-11 3/4"
WP3	2'-10 3/8"	-1'-11 1/8"	8'-10 1/4"
WP4	4'-4 1/2"	-0'-7 3/8"	9'-4 1/2"
WP5	-7'-3 3/4"	-2'-0 1/8"	1'-6 1/2"
WP6	-4'-0 1/2"	-5'-0 1/8"	3'-11 3/8"
WP7	4'-0 1/2"	-5'-0 1/8"	8'-3 3/8"
WP8	7'-3 3/4"	-2'-0 1/8"	9'-5 3/8"
WP9	4'-4 1/2"	0'-7 3/8"	9'-10 1/8"
WP10	2'-10 3/8"	1'-11 1/8"	9'-10 1/8"
WP11	-2'-10 3/8"	1'-11 1/8"	9'-10 1/8"
WP12	-4'-4 1/2"	0'-7 3/8"	9'-10 1/8"
WP13	-4'-4 1/2"	-0'-7 3/8"	11'-1 1/8"
WP14	-2'-10 3/8"	-1'-11 1/8"	13'-1 1/8"
WP15	2'-10 3/8"	-1'-11 1/8"	18'-10 1/8"
WP16	4'-4 1/2"	-0'-7 3/8"	20'-11 1/8"
WP17	4'-4 1/2"	0'-7 3/8"	22'-2 1/2"
WP18	2'-10 3/8"	1'-11 1/8"	22'-2 1/2"
WP19	-2'-10 3/8"	1'-11 1/8"	22'-2 1/2"
WP20	-4'-4 1/2"	0'-7 3/8"	22'-2 1/2"
WP21*	-4'-6 1/2"	0'-0 3/8"	22'-2 1/2"
WP22	-7'-3 3/4"	-2'-0 1/8"	11'-8 3/8"
WP23	-4'-0 1/2"	-5'-0 1/8"	14'-1 1/2"
WP24	4'-0 1/2"	-5'-0 1/8"	18'-3 1/8"
WP25	7'-3 3/4"	-2'-0 1/8"	20'-8 1/8"
WP26*	0	-2'-6 1/2"	5'-11 1/8"
WP27*	0	-5'-9 1/4"	6'-1 1/2"
WP28*	0	2'-6 1/2"	9'-10 1/8"
WP29*	0	-2'-6 1/2"	16'-0 1/8"
WP30*	0	-5'-9 1/4"	16'-2 1/2"
WP31*	0	2'-6 1/2"	22'-2 1/2"

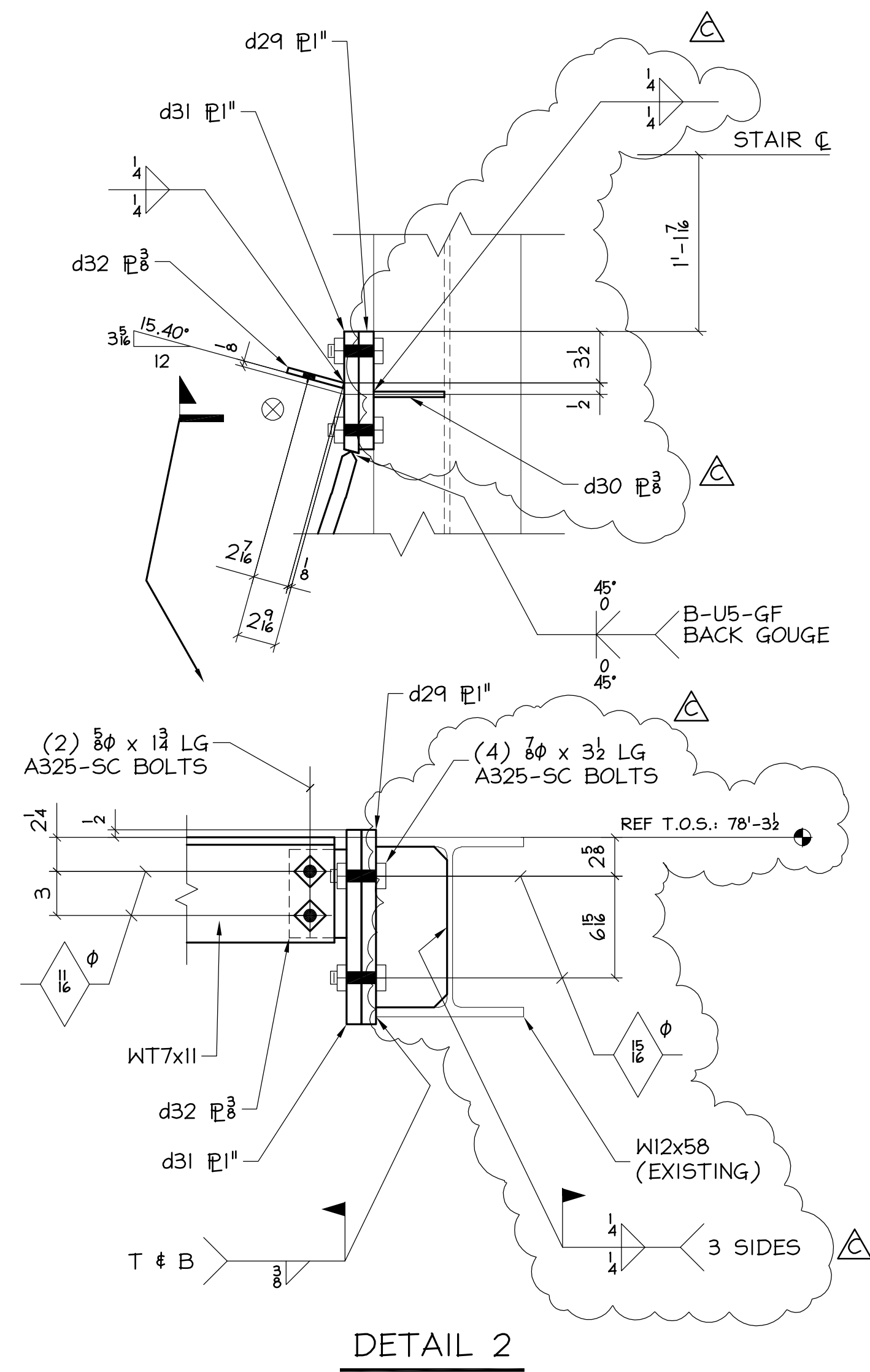
55 East 77th Street PPA Oval Stair New York, NY		ENGR: KPFF CONTR:	ADI / ANGLE DETAILING, INC. ADI JOB# 2004-366
COLUMBIA WIRE & IRON WORKS 5555 N. Channel Portland, Ore. 97217 www.cwiil.com/503-286-6600		DRAWN BY: GDC	CHK'D BY: ADI
JOB NO: 90-001001		DWG. NO: EI	

REV	DATE	BY	DESCRIPTION	DWG STATUS	DATE
C	9/10/04	GDC	DELETED 502B PER ORIGINAL KPFF DESIGN	FOR FABRICATION	
B	8/26/04	GDC	UPDATED DETAILS	FOR FABRICATION	
A	8/25/04	GDC	ISSUED FOR APPROVAL - FAB READY	FOR APPROVAL	

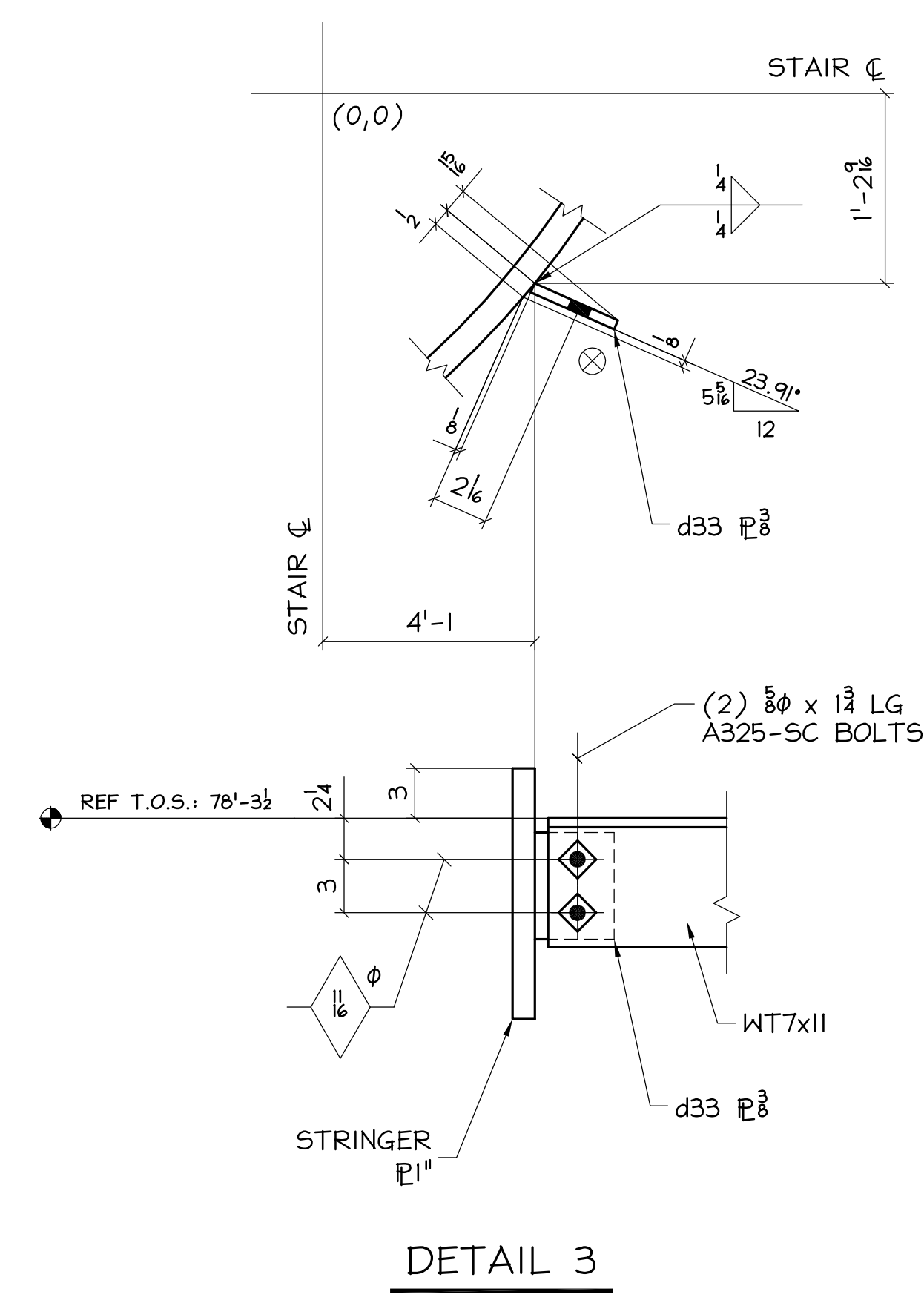
VERIFICATION OF DIMENSIONS, DETAILS, AND ETC. ARE REQUESTED WHERE INDICATED. IF EACH VERIFICATION IS NOT NOTED OTHERWISE, IT WILL BE ASSUMED TO BE CORRECT AS SHOWN



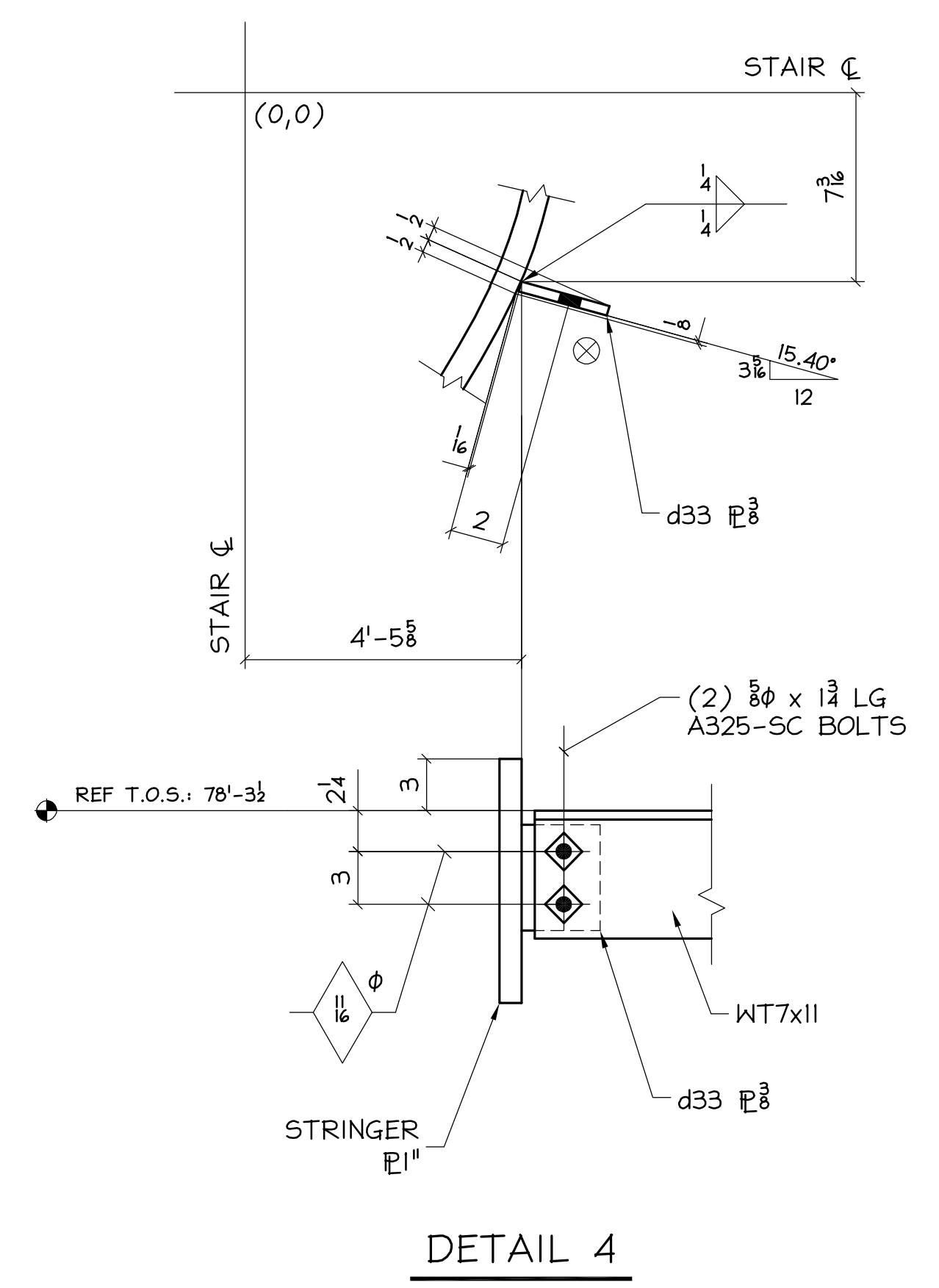
DETAIL 1



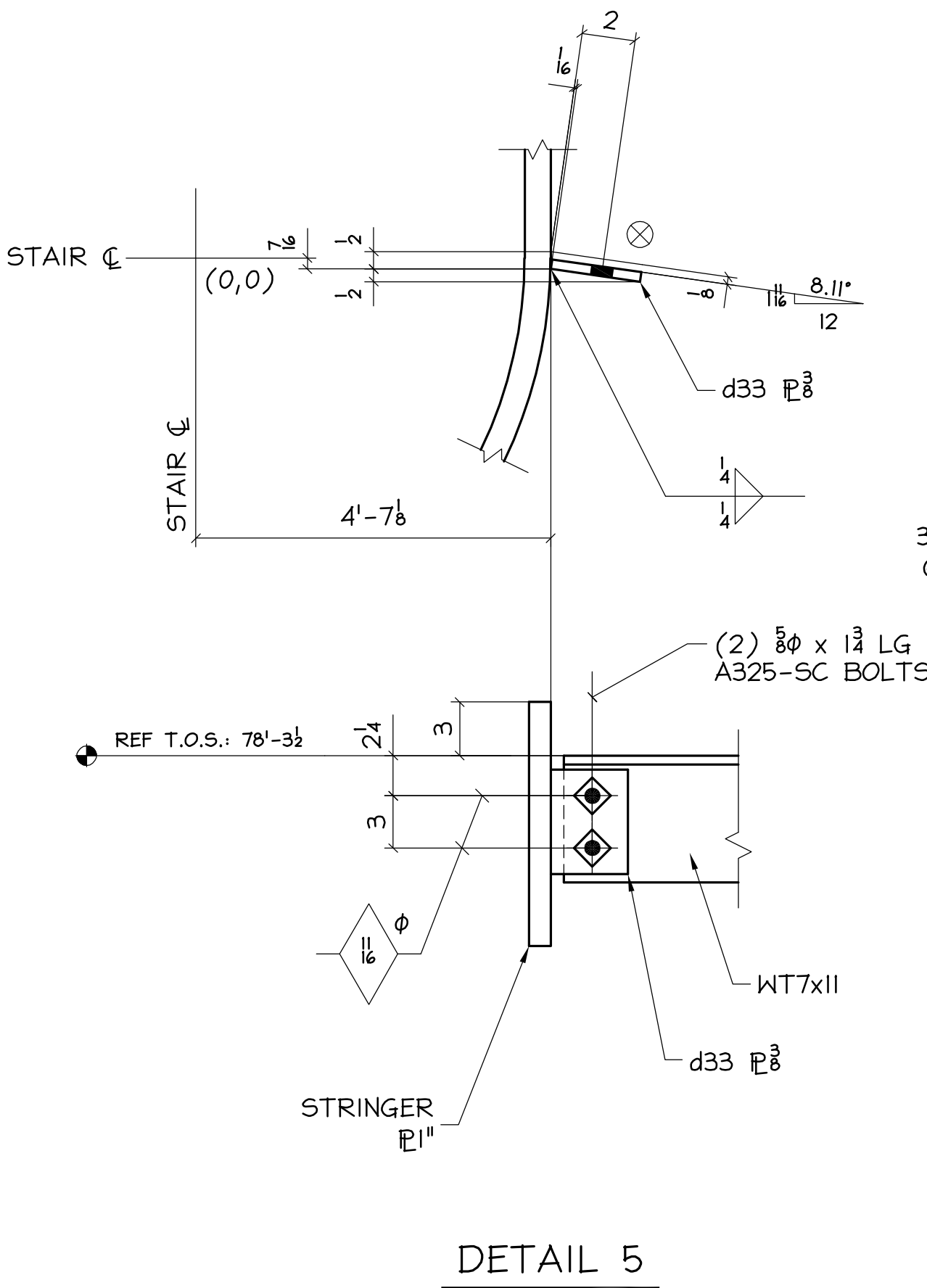
DETAIL 2



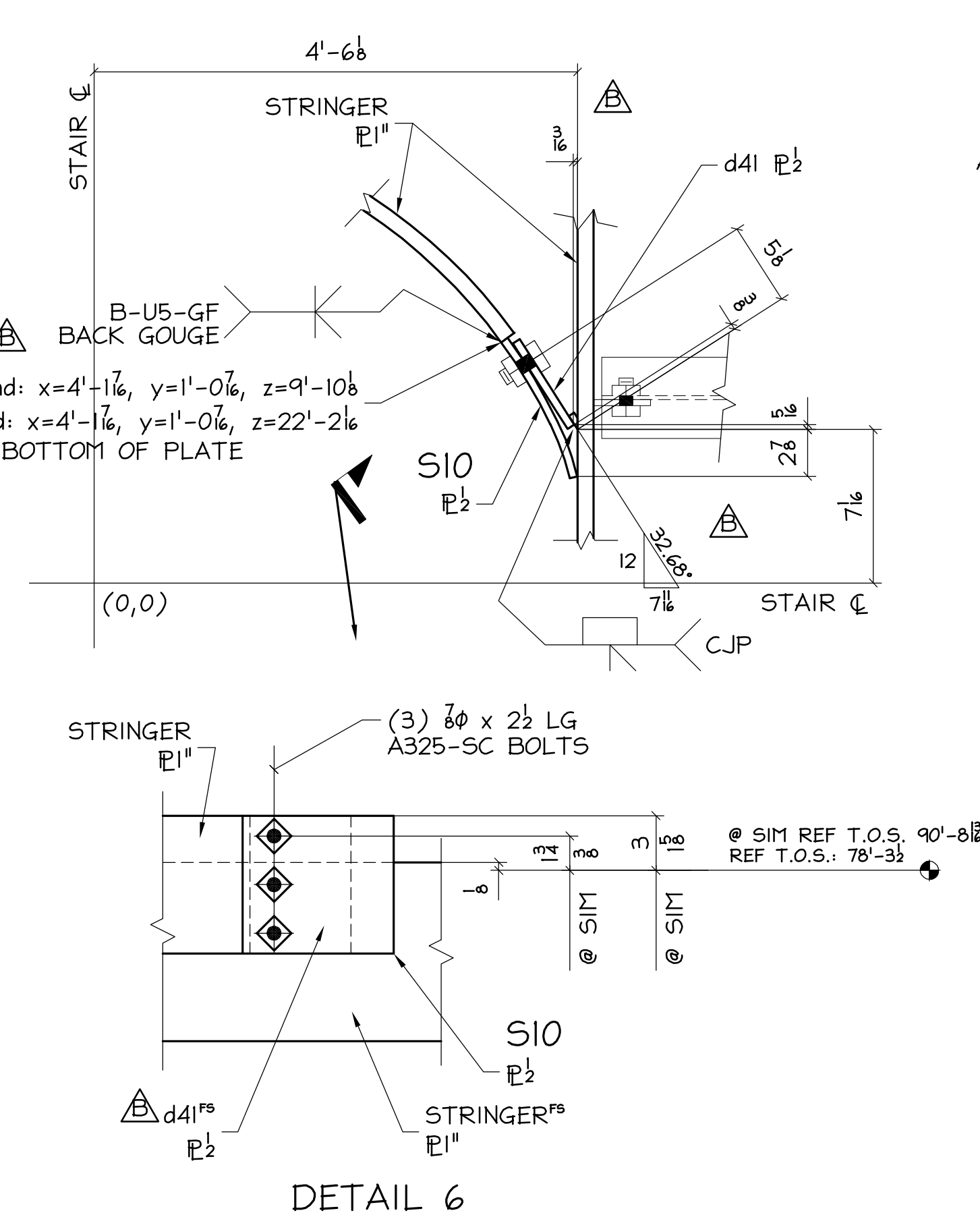
DETAIL 3



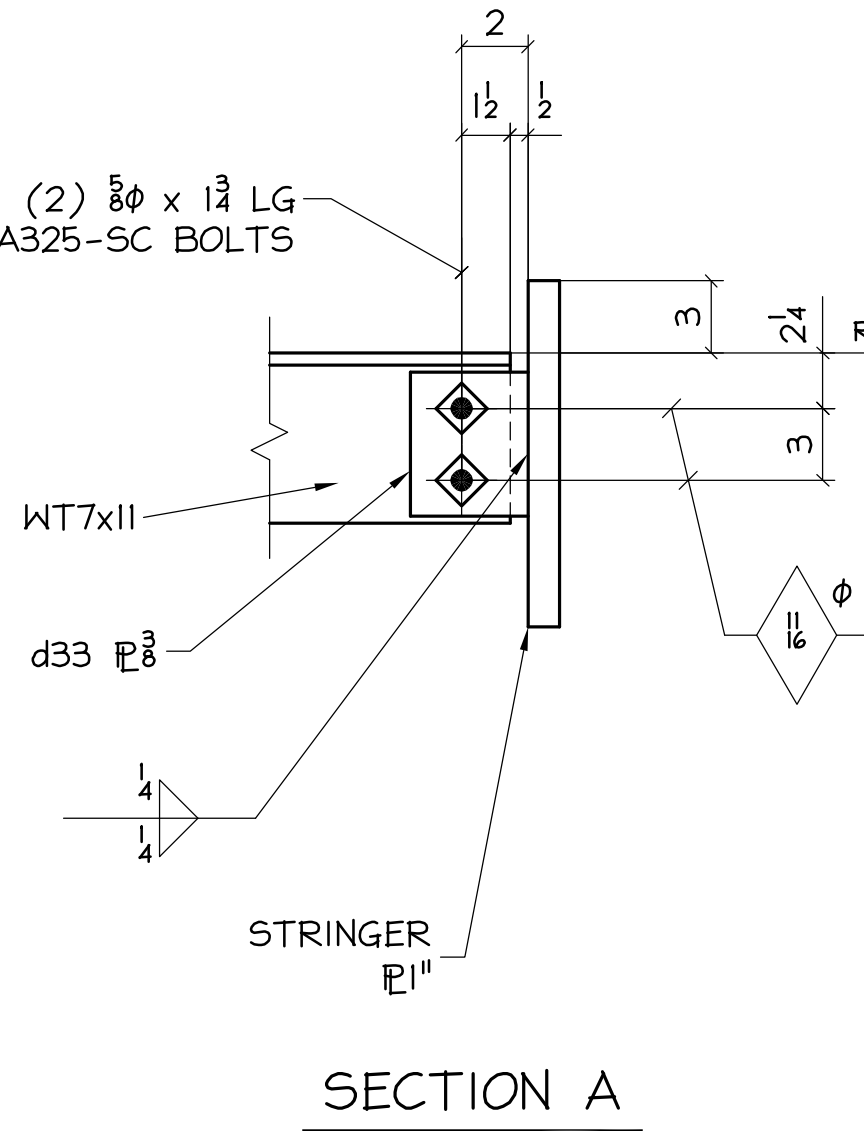
DETAIL 4



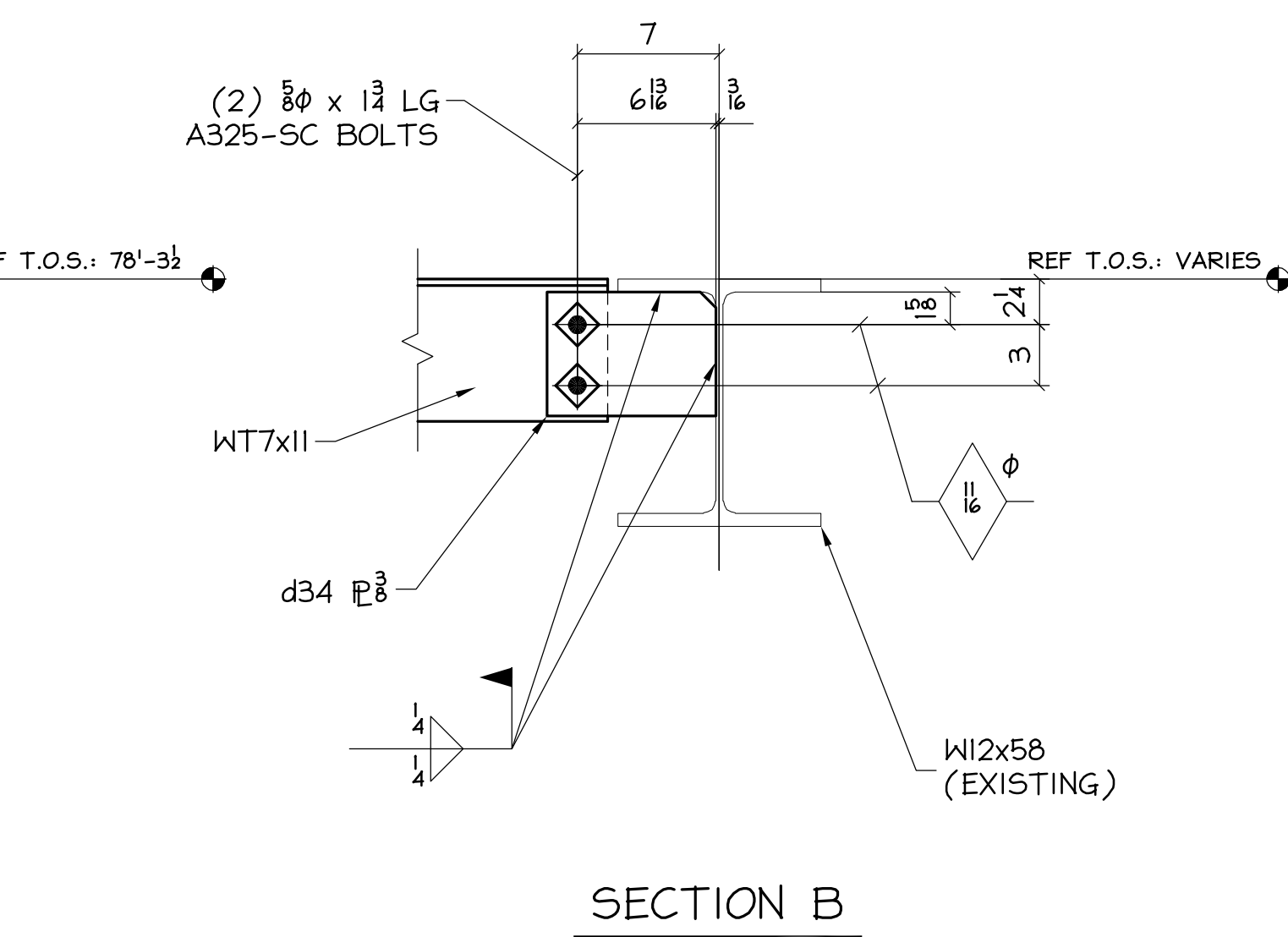
DETAIL 5



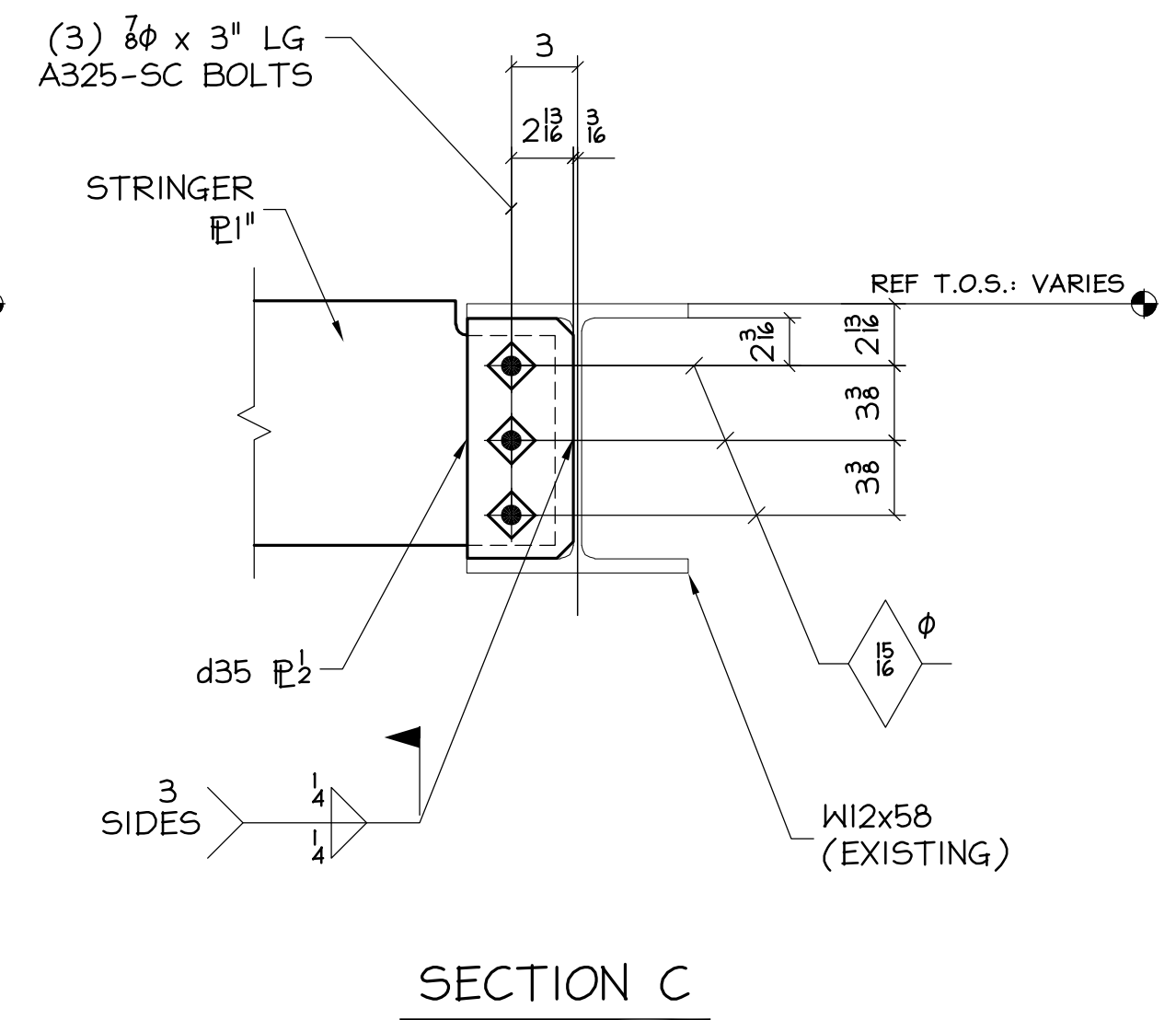
DETAIL 6



SECTION A



SECTION B



SECTION C

VERIFICATION OF DIMENSIONS, DETAILS, AND ETC. ARE REQUESTED WHERE INDICATED. IF EACH VERIFICATION IS NOT NOTED OTHERWISE, IT WILL BE ASSUMED TO BE CORRECT AS SHOWN

REV	DATE	BY	DESCRIPTION	DWG STATUS	DATE
C	9/10/04	GDC	REVISED DETAIL 2 PER ORIGINAL KPFF DESIGN	FOR FABRICATION	
B	8/26/04	GDC	UPDATED DETAILS	FOR FABRICATION	
A	8/25/04	GDC	ISSUED FOR APPROVAL - FAB READY	FOR APPROVAL	

55 East 77th Street
PPA Oval Stair
New York, NY

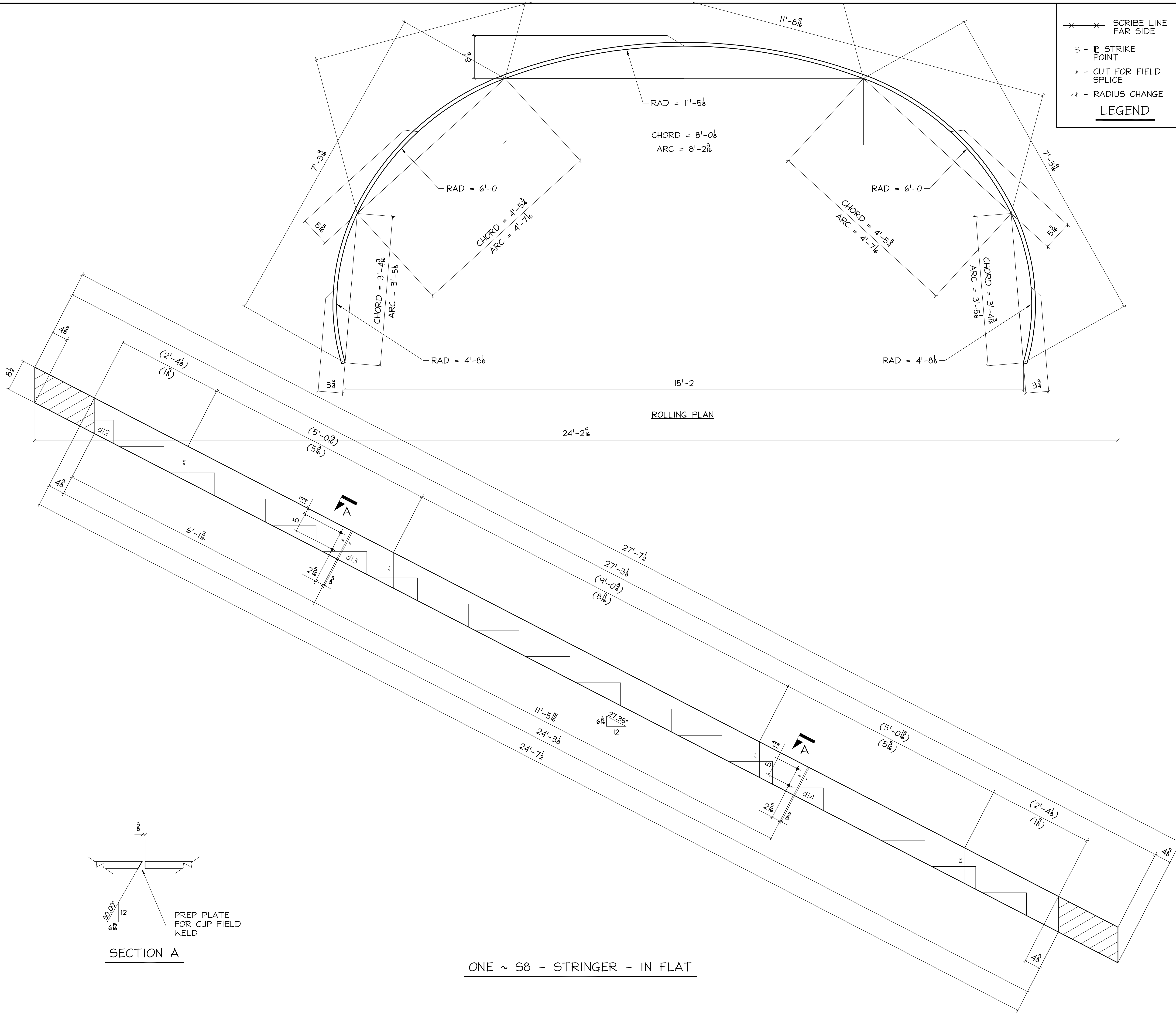
ENG'R: KPFF
CONTR: ADI / ANGLE DETAILING, INC.
ADI JOB# 2004-366

COLUMBIA WIRE & IRON WORKS
5555 N. Channel Portland, Ore. 97217
www.cwil.com/503-286-6600

DRAWN BY: GDC
CHK'D BY: ADI
JOB NO: 90-001001
DWG. NO: E4

email: info@angledetailing.com

N:\FPI\GWA\SPECIAL-PROJECT_GREEN-SHIP\90-001\05 EAST 77TH STREET_FIBRE-STAIR\2004-366 (NY_STAIR_1)\SAXX\A5\5008.DWG - 3/24/10 12:23pm GJLES gordian.org



X X SCRIBE LINE FAR SIDE
 S - STRIKE POINT
 * - CUT FOR FIELD SPLICE
 ** - RADIUS CHANGE
LEGEND

BILL OF MATERIAL

NO. TO SHIP	SHIP MARK	TOTAL No	PC MARK	DESCRIPTION	LENGTH		REMARKS	ADV. BILL	WEIGHT	
					FT.	IN.			UNIT	TOTAL
ONE	58			1" x 8 1/2	27	7 1/2	ROLLED			

FABRICATION NOTES:

HOLES UNO: 1/2"

WELD: E70XX

REF DWG:

MATERIAL UNO: A36
TS=A500 GRB

PAINT:

NOTES:

VERIFICATION OF DIMENSIONS, DETAILS, AND ETC. ARE REQUESTED, WHERE INDICATED. IF EACH VERIFICATION IS NOT NOTED OTHERWISE, IT WILL BE ASSUMED TO BE CORRECT AS SHOWN.

REV	DATE	BY	DESCRIPTION	DWG STATUS	DATE
A	8/6/04	ADI	ISSUED FOR APPROVAL - FAB READY	FOR APPROVAL	

55 East 77th Street
PPA Oval Stair
New York, NY

ENGR: KPFF
CONTR: ADI / ANGLE DETAILING, INC.
ADI JOB# 2004-366

COLUMBIA WIRE & IRON WORKS
5555 N. Channel Portland, Ore. 97217
www.cwil.com/503-286-6600

DRAWN BY: GDC
CHKD BY: ADI
JOB NO: 90-001001
DWG. NO: 58

