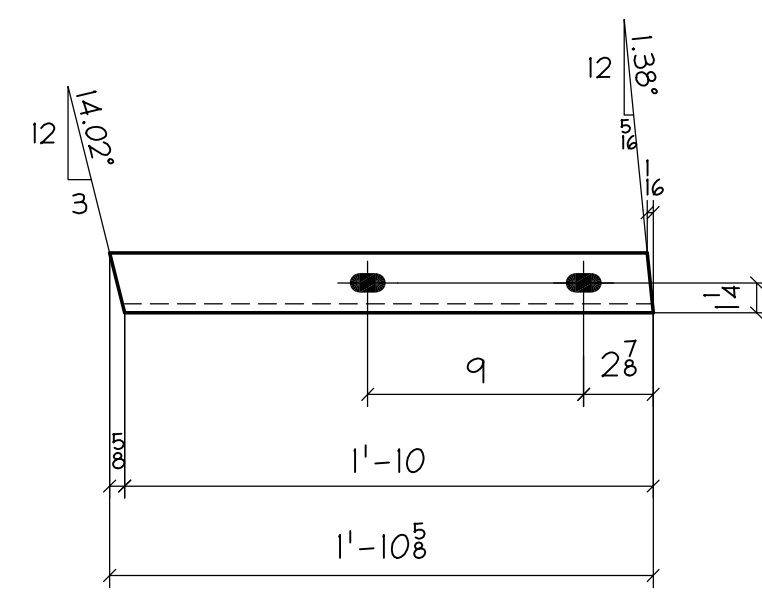
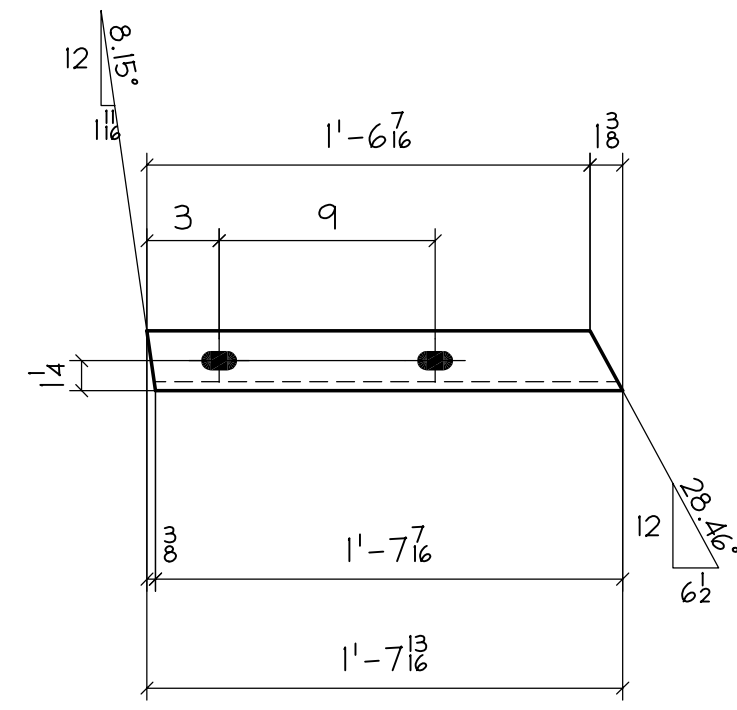


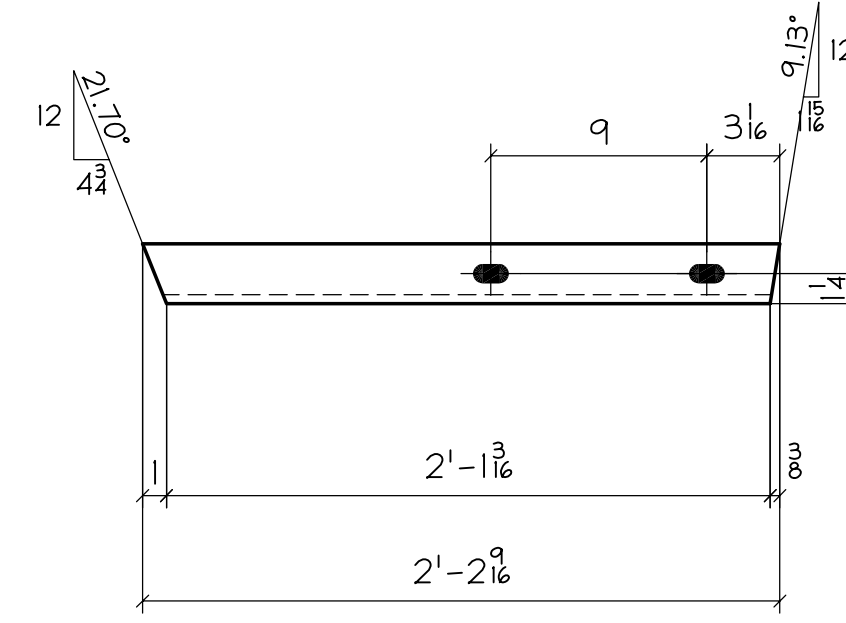
**c1 ~ ONE REQ'D**  
MC6x12



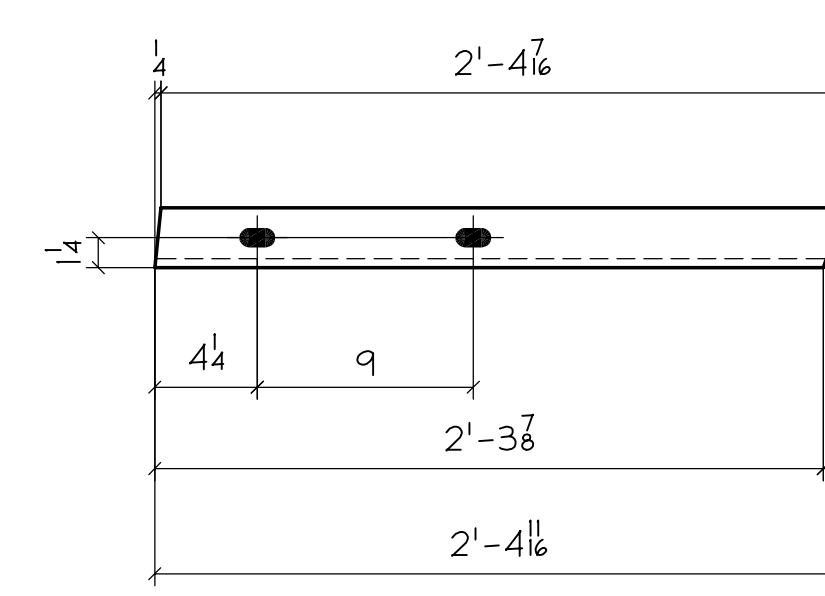
**c2 ~ ONE REQ'D**  
MC6x12



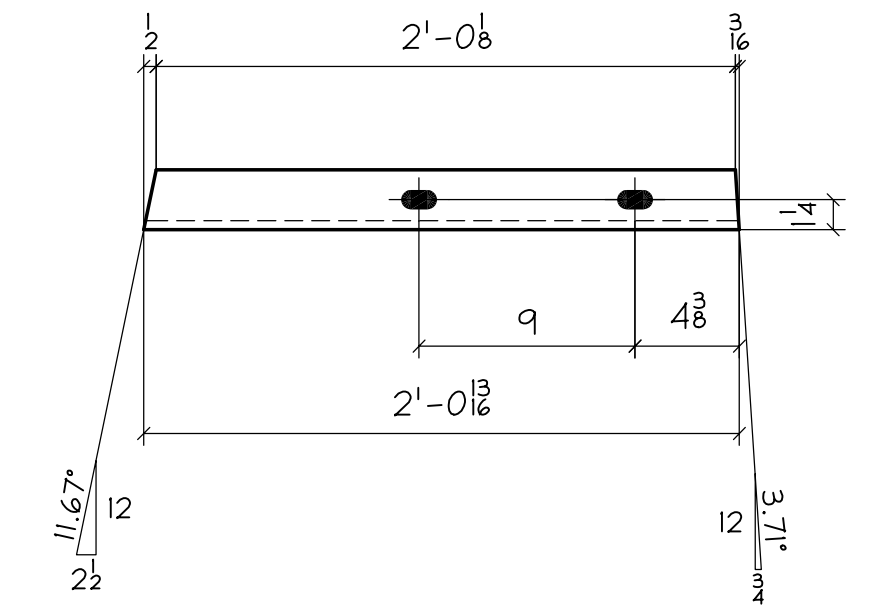
**c3 ~ ONE REQ'D**  
MC6x12



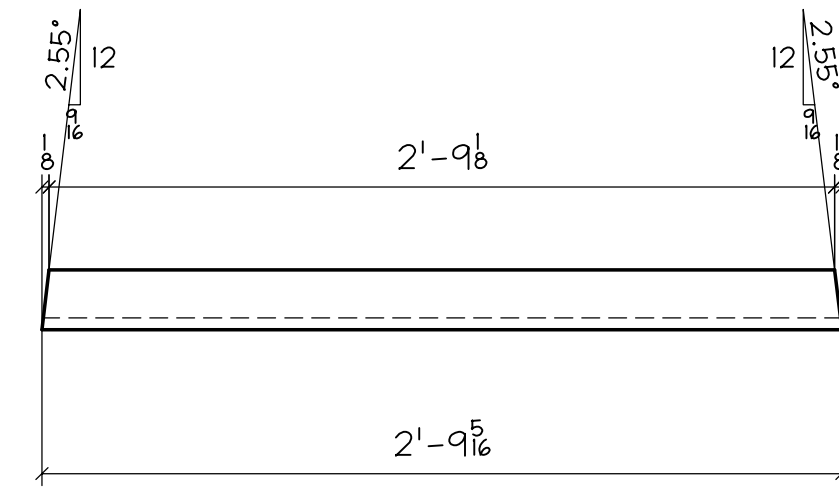
**c4 ~ ONE REQ'D**  
MC6x12



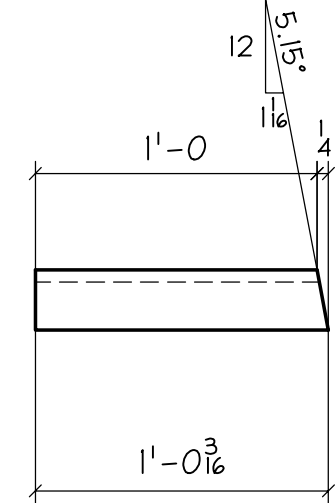
**c5 ~ ONE REQ'D**  
MC6x12



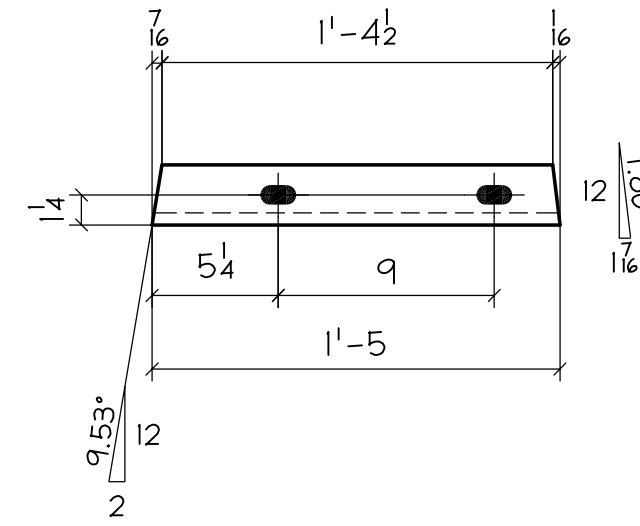
**c6 ~ ONE REQ'D**  
MC6x12



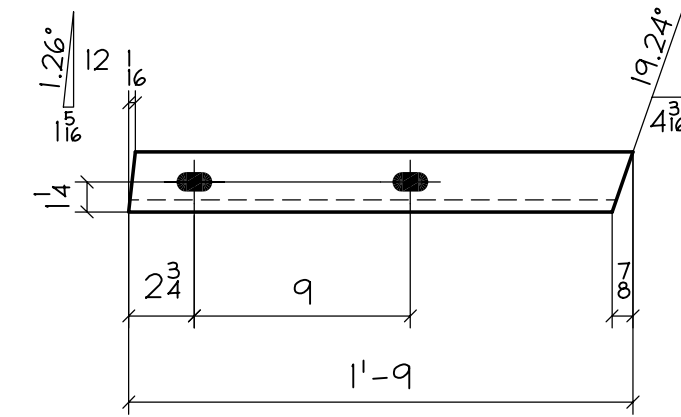
**c7 ~ ONE REQ'D**  
MC6x12



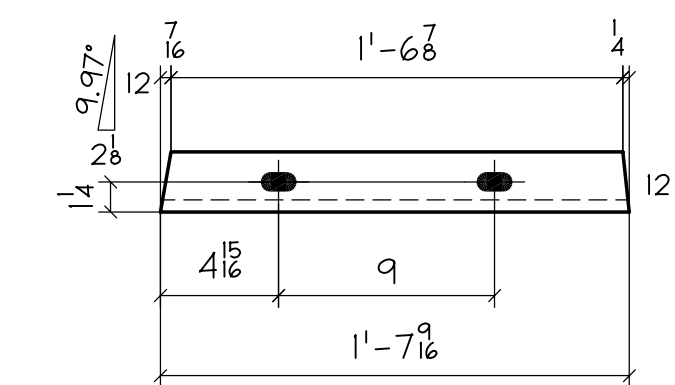
**c8 ~ ONE REQ'D**  
MC6x12



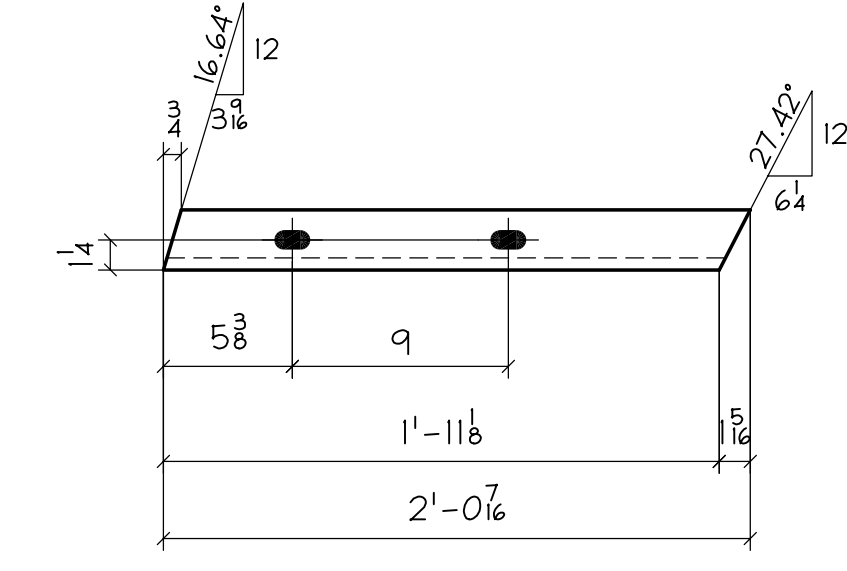
**c9 ~ ONE REQ'D**  
MC6x12



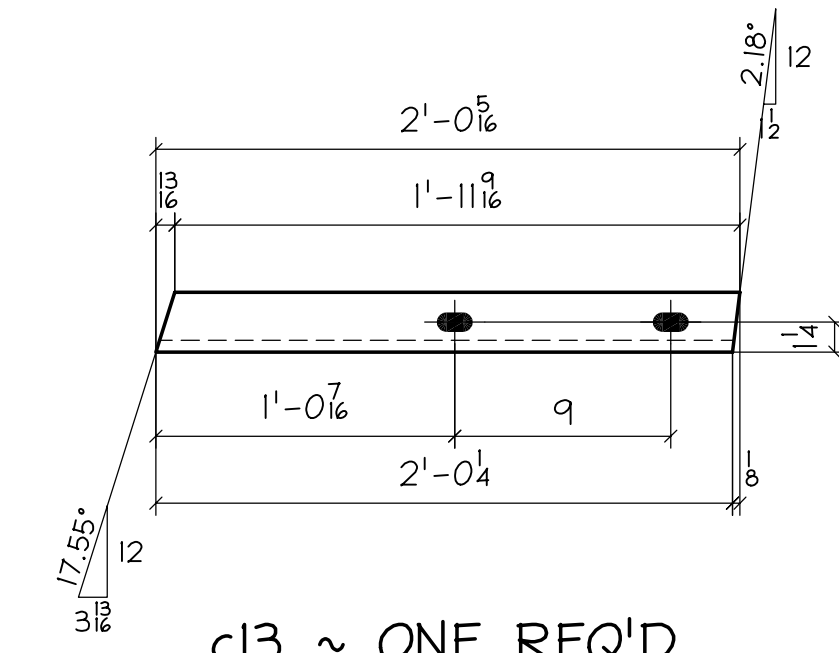
**c10 ~ ONE REQ'D**  
MC6x12



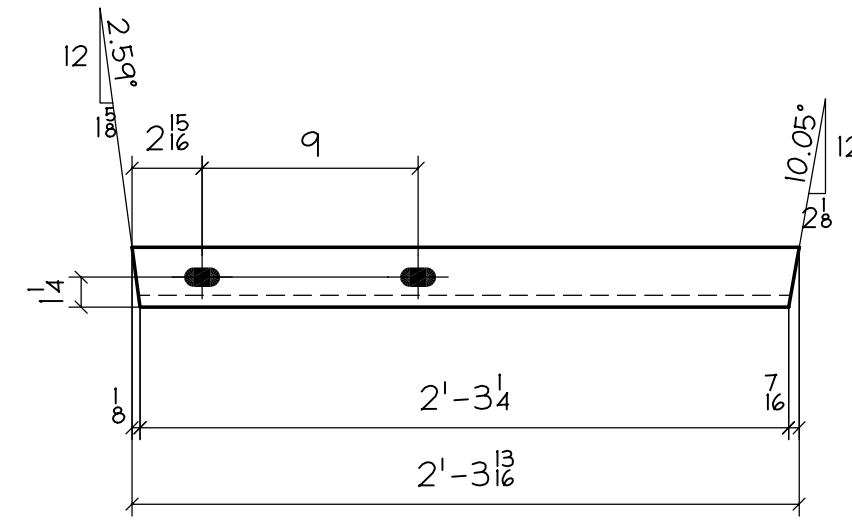
**c11 ~ ONE REQ'D**  
MC6x12



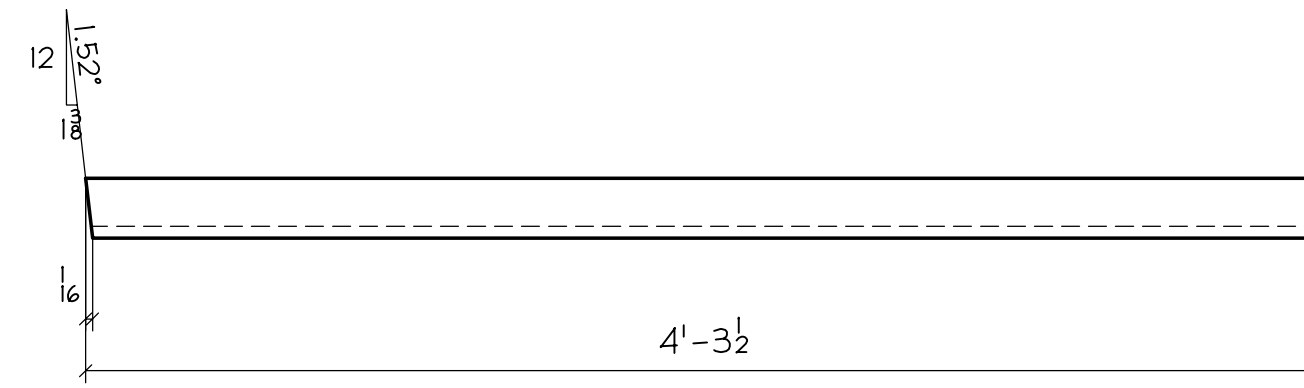
**c12 ~ ONE REQ'D**  
MC6x12



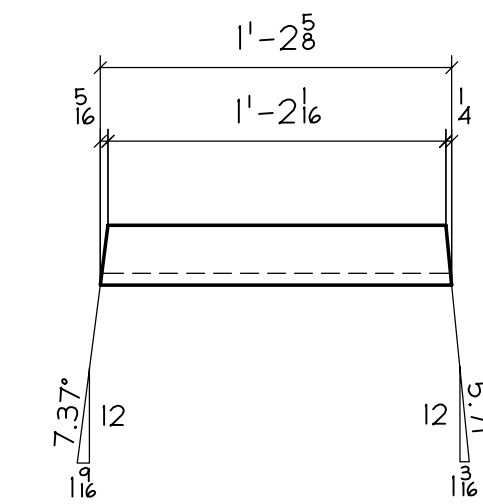
**c13 ~ ONE REQ'D**  
MC6x12



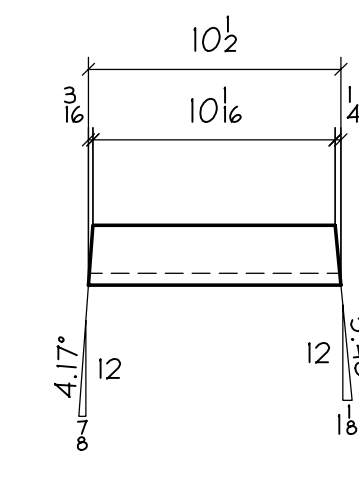
**c14 ~ ONE REQ'D**  
MC6x12



**c15 ~ ONE REQ'D**  
MC6x12



**c16 ~ ONE REQ'D**  
MC6x12



**c17 ~ ONE REQ'D**  
MC6x12

BILL OF MATERIAL												
NO. TO SHIP	SHIP MARK	TOTAL No	PC MARK	DESCRIPTION	LENGTH		REMARKS	ADV. BILL	WEIGHT			
					FT.	IN.			UNIT	TOTAL	TOTAL	
1		1	c1	MC6x12	1	7 1/2	SEE DWG S2					
1		1	c2	MC6x12	1	10 5/8	SEE DWG S2					
1		1	c3	MC6x12	1	7 1/8	SEE DWG S2					
1		1	c4	MC6x12	2	2 7/8	SEE DWG S2					
1		1	c5	MC6x12	2	4 1/8	SEE DWG S2					
1		1	c6	MC6x12	2	0 13/16	SEE DWG S2					
1		1	c7	MC6x12	2	9 1/8	SEE DWG S2					
1		1	c8	MC6x12	1	0 1/8	SEE DWG S2					
1		1	c9	MC6x12	1	5	SEE DWG S2					
1		1	c9	MC6x12	1	5	SEE DWG S2					
1		1	c10	MC6x12	1	9	SEE DWG S2					
1		1	c11	MC6x12	1	7 1/8	SEE DWG S2					
1		1	c12	MC6x12	2	0 1/8	SEE DWG S2					
1		1	c13	MC6x12	2	0 1/8	SEE DWG S2					
1		1	c14	MC6x12	2	3 3/8	SEE DWG S2					

BILL OF MATERIAL												
NO. TO SHIP	SHIP MARK	TOTAL No	PC MARK	DESCRIPTION	LENGTH		REMARKS	ADV. BILL	WEIGHT			
					FT.	IN.			UNIT	TOTAL	TOTAL	
1		1	c15	MC6x12	4	3 1/2	SEE DWG S2					
1		1	c16	MC6x12	1	2 7/8	SEE DWG S2					
1		1	c17	MC6x12	0	10 1/2	SEE DWG S2					
1		1	c18	MC6x12	0	11 1/8	SEE DWG S2					
1		1	c19	MC6x12	1	3 1/2	SEE DWG S2					

**PLAIN MAT'L**  
**c18 ~ ONE REQ'D**  
MC6x12

**c19 ~ ONE REQ'D**  
MC6x12

FABRICATION NOTES:			
HOLES UNO: 1/2 x 1 SLOTS			
WELD: E70XX			
REF DWG: 7, 8 & 9			
MATERIAL UNO: A36 / TS=A500 GR.B			
PIPE=A53 TYPE E/S			
PAINT: NONE			
NOTES:			
VERIFICATION OF DIMENSIONS, DETAILS, AND ETC. ARE REQUESTED, WHERE INDICATED. IF EACH VERIFICATION IS NOT NOTED OTHERWISE, IT WILL BE ASSUMED TO BE CORRECT AS SHOWN.			
REV	DATE	BY	DESCRIPTION
A	7/27/01	ADI	FOR APPL / FAB READY
GUGGENHEIM ART OF THE MOTORCYCLE VENETIAN CASINO RESORT LAS VEGAS, NV			
ENGR: LOC'SHA ENGR'G / FOGA / TSA			ADI / ANGLE DETAILING, INC.
CONTR: TAYLOR			ADI JOB# 2001-108
Columbia Wire & Iron Works			
5555 N. Channel Portland Or. 97217			
drew@CWII.com/503-286-6600			
DRAWN BY:	CHKD BY:	JOB NO.	DWG. NO.
DK/CG		99-094003	52