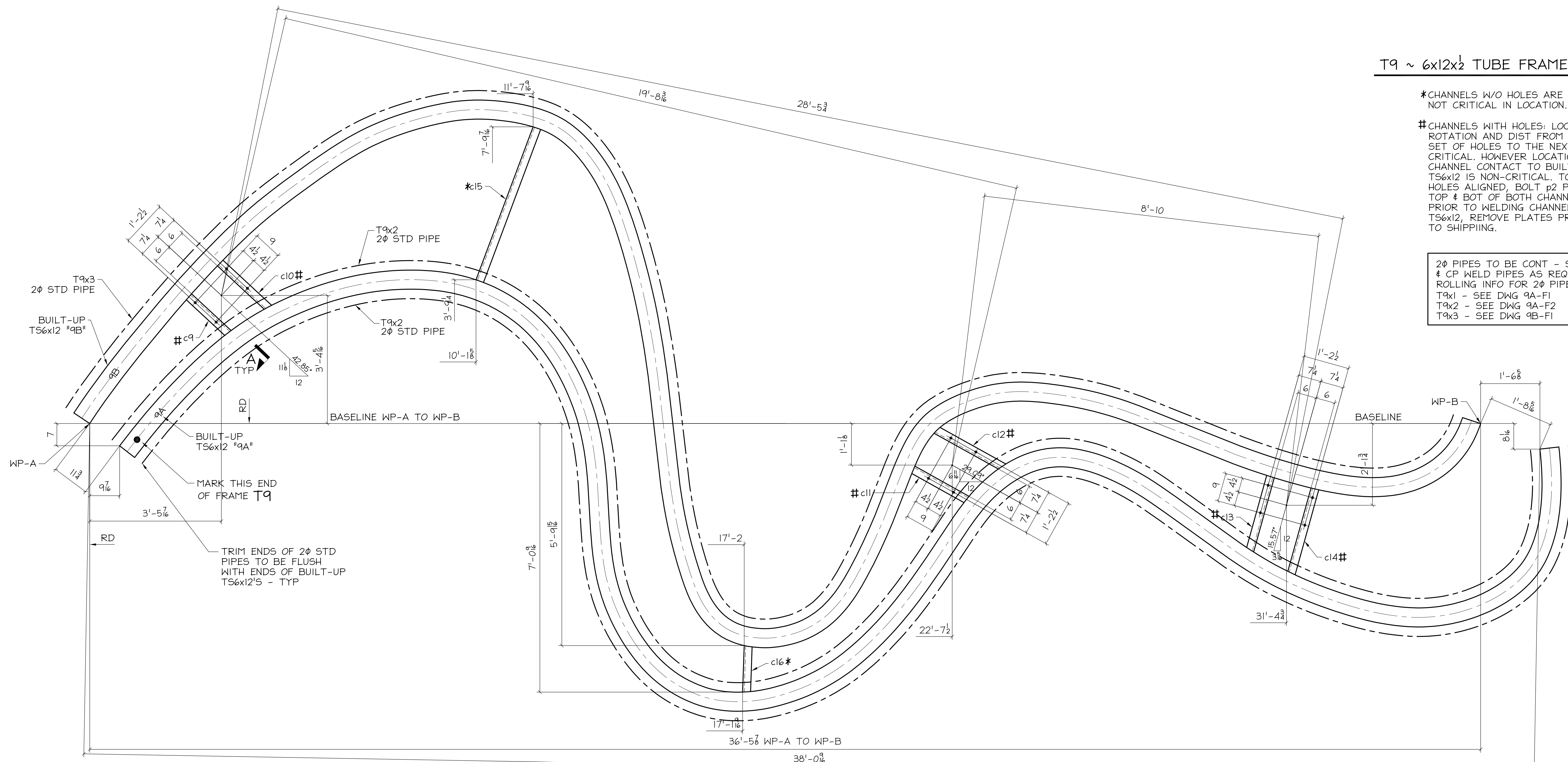


T9 ~ 6x12x2¹ TUBE FRAME ASSY

*CHANNELS W/O HOLES ARE NOT CRITICAL IN LOCATION.

#CHANNELS WITH HOLES: LOCATION, ROTATION AND DIST FROM ONE SET OF HOLES TO THE NEXT IS CRITICAL. HOWEVER LOCATION OF CHANNEL CONTACT TO BUILT-UP TS6x12 IS NON-CRITICAL. TO KEEP HOLES ALIGNED, BOLT p2 PLATES TOP & BOT OF BOTH CHANNELS PRIOR TO WELDING CHANNELS TO TS6x12, REMOVE PLATES PRIOR TO SHIPPING.

2φ PIPES TO BE CONT - SPLICE & CP WELD PIPES AS REQ'D. ROLLING INFO FOR 2φ PIPES:
 T9x1 - SEE DWG 9A-F1
 T9x2 - SEE DWG 9A-F2
 T9x3 - SEE DWG 9B-F1



FABRICATION NOTES:	
HOLES UNO: 1/2" x 1" SLOT	
WELD: E70XX	
REF DWG: E1	
MATERIAL UNO: A36 / TS=A500 GR.B	
PIPE=A53 TYPE E/S	
PAIN:	
NOTES: ALL DIMS TO C's UNO	
ALL CURVES ARE PLANER (2D)	
VERIFICATION OF DIMENSIONS, DETAILS, AND ETC. ARE REQUESTED, WHERE INDICATED. IF EACH VERIFICATION IS NOT NOTED OTHERWISE, IT WILL BE ASSUMED TO BE CORRECT AS SHOWN.	

REV	DATE	BY	DESCRIPTION	DWG STATUS	DATE
A	7/27/01	ADI	FOR APPL / FAB READY		

GUGGENHEIM ART OF THE MOTORCYCLE
 VENETIAN CASINO RESORT
 LAS VEGAS, NV

ENGR: LOCISHA ENGR'G / FOGA / TSA
 CONTR: TAYLOR

Columbia Wire & Iron Works
 5555 N. Channel Portland Or. 97217
 drew@CWI.com/503-286-6600

DRAWN BY: CG	CHKD BY:	JOB NO. 99-094003	DWG. NO. 9
--------------	----------	-------------------	------------

NO. TO SHIP	SHIP MARK	TOTAL NO PC	PC MARK	DESCRIPTION	LENGTH FT. IN.	REMARKS	ADV. BILL	WEIGHT UNIT TOTAL
ONE	T9			FRAME ASSY				
		1	9A	BUILT-UP TS6x12		SEE DWG 9A		
		1	9B	BUILT-UP TS6x12		SEE DWG 9B		
		1	c9	MC6x12	1 5	SEE DWG S2		
		1	c10	MC6x12	1 9	SEE DWG S2		
		1	c11	MC6x12	1 7 1/8	SEE DWG S2		
		1	c12	MC6x12	2 0 1/8	SEE DWG S2		
		1	c13	MC6x12	2 0 1/8	SEE DWG S2		
		1	c14	MC6x12	2 3 3/8	SEE DWG S2		
		1	c15	MC6x12	4 3 1/2	SEE DWG S2		
		1	c16	MC6x12	1 2 3/8	SEE DWG S2		

NO. TO SHIP	SHIP MARK	TOTAL NO PC	PC MARK	DESCRIPTION	LENGTH FT. IN.	REMARKS	ADV. BILL	WEIGHT UNIT TOTAL
		1	T9x1	2φ STD PIPE CURVED	54 0	SEE DWG 9A-F1		
		1	T9x2	2φ STD PIPE CURVED	53 0	SEE DWG 9A-F2		
		1	T9x3	2φ STD PIPE CURVED	55 0	SEE DWG 9A-F3		
		6	p2	1/2" x 13	1 4 1/2	FAB AID		
		165	x1	1/4" x 24	0 2 3/8			
		6	x2	1/2" x 24	0 5/4			
		12		FIELD BOLTS				
				3/8" A325 W/N # W	0 2 1/2			

