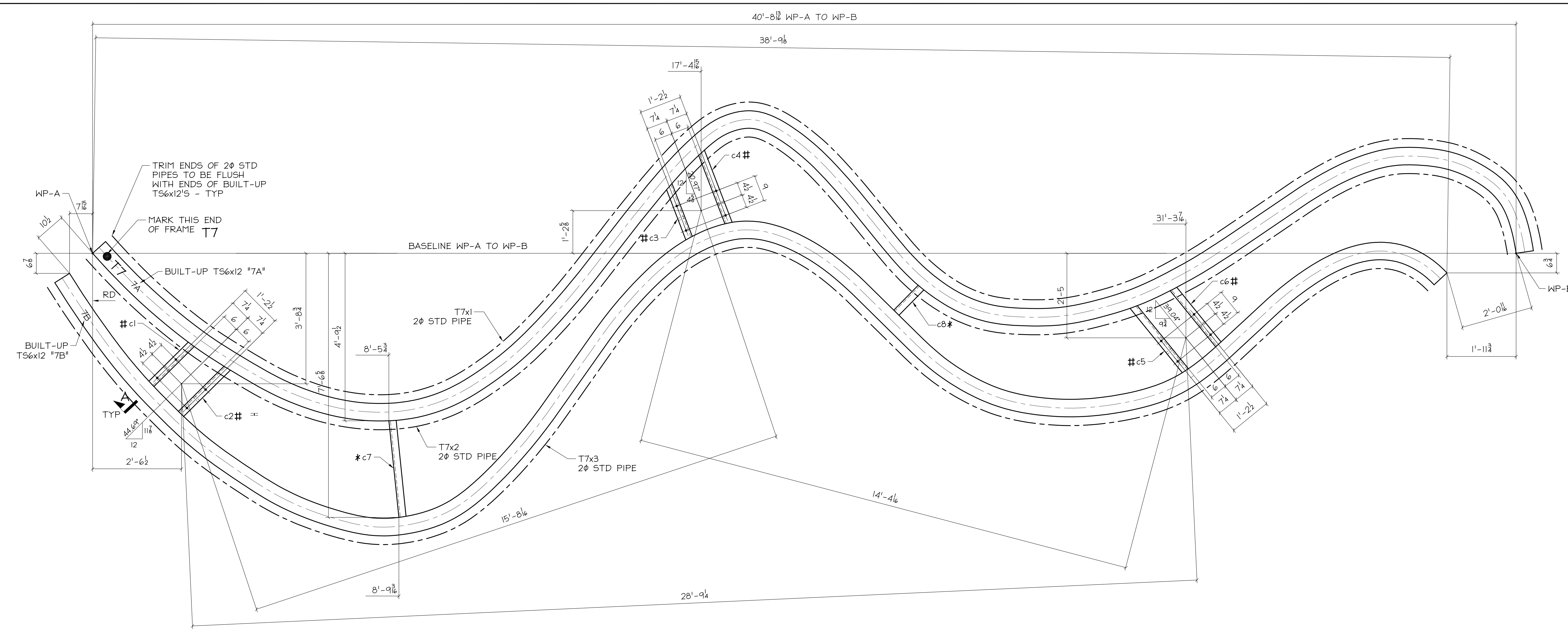


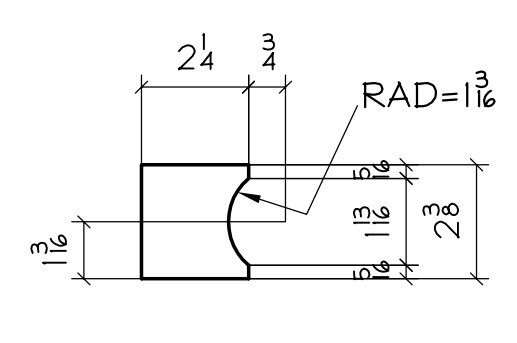
email: info@angleDetailing.com



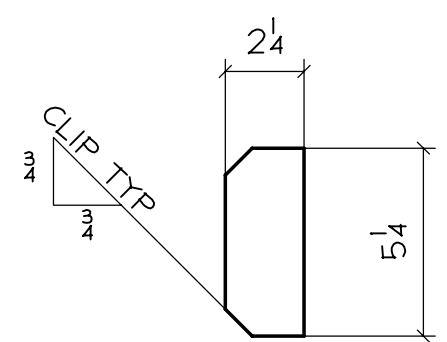
2φ PIPES TO BE CONT - SPLICE
 # CP WELD PIPES AS REQ'D.
 ROLLING INFO FOR 2φ PIPES:
 T7x1 - SEE DWG 7A-F1
 T7x2 - SEE DWG 7A-F2
 T7x3 - SEE DWG 7B-F1

T7 ~ 6x12x 1/2 TUBE FRAME ASSY

- *CHANNELS W/O HOLES ARE NOT CRITICAL IN LOCATION.
- #CHANNELS WITH HOLES: LOCATION, ROTATION AND DIST FROM ONE SET OF HOLES TO THE NEXT IS CRITICAL. HOWEVER LOCATION OF CHANNEL CONTACT TO BUILT-UP TS6x12 IS NON-CRITICAL. TO KEEP HOLES ALIGNED, BOLT p2 PLATES TOP # BOT OF BOTH CHANNELS PRIOR TO WELDING CHANNELS TO TS6x12, REMOVE PLATES PRIOR TO SHIPPING.



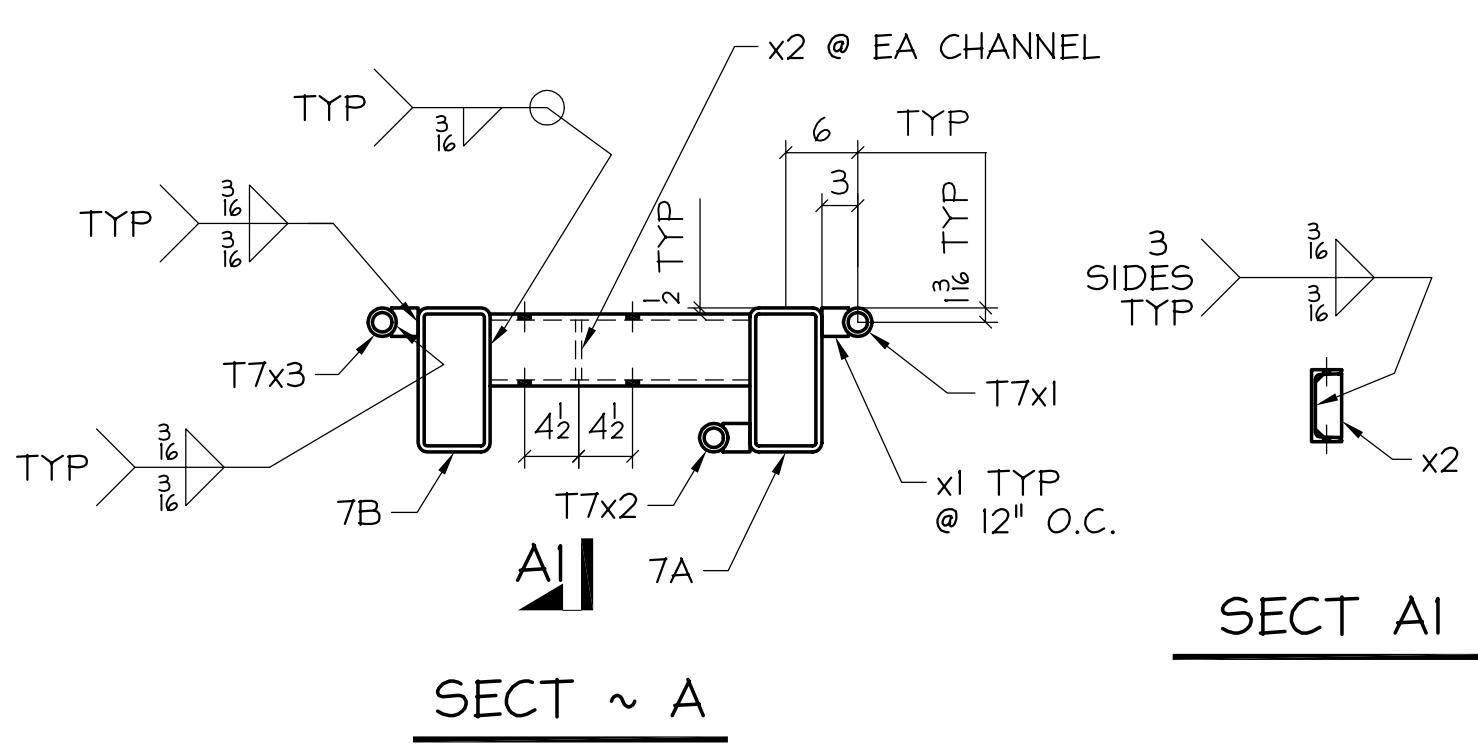
x1 ~ 154 REQ'D
 P 1/4 x 2 1/4 x 0'-2 3/8



x2 ~ 6 REQ'D
 P 1/2 x 2 1/4 x 0'-5 1/4

BILL OF MATERIAL										
NO. TO SHIP	SHIP MARK	TOTAL No	PC MARK	DESCRIPTION	LENGTH FT.	IN.	REMARKS	ADV. BILL	WEIGHT UNIT	TOTAL
ONE	T7			FRAME ASSY						
		1	7A	BUILT-UP TS6x12			SEE DWG 7A			
		1	7B	BUILT-UP TS6x12			SEE DWG 7B			
		1	c1	MC6x12	1	7 1/2	SEE DWG S2			
		1	c2	MC6x12	1	10 3/8	SEE DWG S2			
		1	c3	MC6x12	1	7 1/8	SEE DWG S2			
		1	c4	MC6x12	2	2 3/8	SEE DWG S2			
		1	c5	MC6x12	2	4 1/8	SEE DWG S2			
		1	c6	MC6x12	2	0 1/8	SEE DWG S2			
		1	c7	MC6x12	2	9 1/8	SEE DWG S2			
		1	c8	MC6x12	1	0 3/8	SEE DWG S2			
		1	T7x1	2φ STD PIPE CURVED	51	0	SEE DWG 7A-F1			
		1	T7x2	2φ STD PIPE CURVED	51	0	SEE DWG 7A-F2			
		1	T7x3	2φ STD PIPE CURVED	51	0	SEE DWG 7A-F3			

BILL OF MATERIAL										
NO. TO SHIP	SHIP MARK	TOTAL No	PC MARK	DESCRIPTION	LENGTH FT.	IN.	REMARKS	ADV. BILL	WEIGHT UNIT	TOTAL
		6	p2	P 3/8 x 13	1	4 1/2	FAB AID			
		154	x1	P 1/4 x 2 1/4	0	2 3/8				
		6	x2	P 1/2 x 2 1/4	0	5 1/4				
		12		FIELD BOLTS						
				3φ A325 W/N # W	0	2 1/2				



FABRICATION NOTES:

HOLES UNO: 1/2 x 1 SLOTS
 WELD: E70XX
 REF DWG: E1
 MATERIAL UNO: A36 / TS=A500 GR.B
 PIPE=A53 TYPE E/S
 PAINT: NO PAINT
 FINISH NO RUST OR SCALE

NOTES:
 VERIFICATION OF DIMENSIONS, DETAILS, AND ETC. ARE REQUESTED, WHERE INDICATED. IF EACH VERIFICATION IS NOT NOTED OTHERWISE, IT WILL BE ASSUMED TO BE CORRECT AS SHOWN.

NO.	DATE	BY	DESCRIPTION	DWG STATUS	DATE
A	7/27/01	ADI	FOR APPL / FAB READY		

GUGGENHEIM ART OF THE MOTORCYCLE
 VENETIAN CASINO RESORT
 LAS VEGAS, NV

ENGR: LOCSHA ENGR'G / FOGA / TSA
 CONTR: TAYLOR

Columbia Wire & Iron Works
 5555 N. Channel Portland Or. 97217
 drew@CWII.com/503-286-6600

DRAWN BY: DK
 CHKD BY: DK
 JOB NO. 99-094003
 DWG. NO. 7

C:\NEW_WEB_PAGE\MOTOR-GUGGENHEIM\07.DWG 11/20/01 10:27am SOLARIS melissa