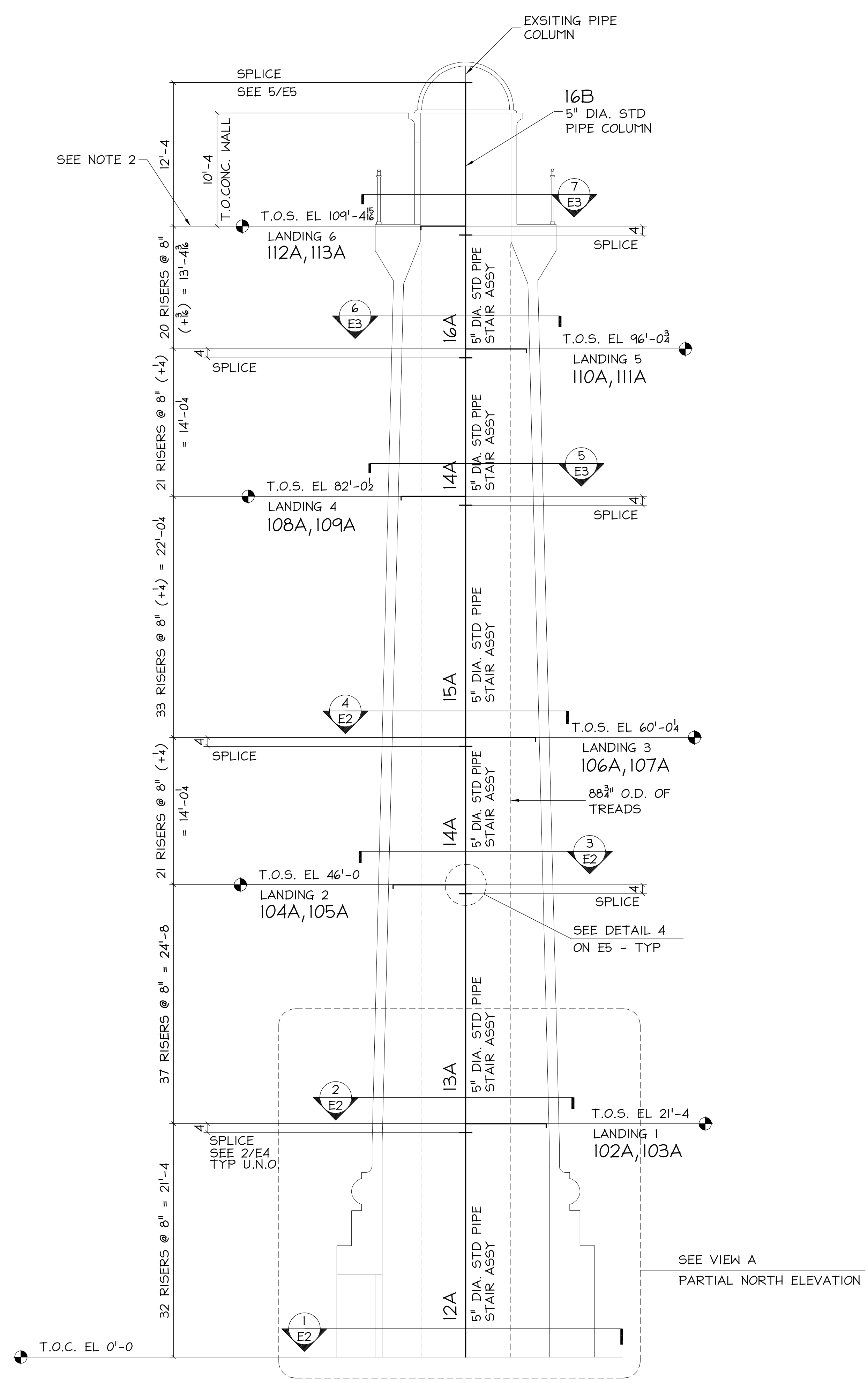
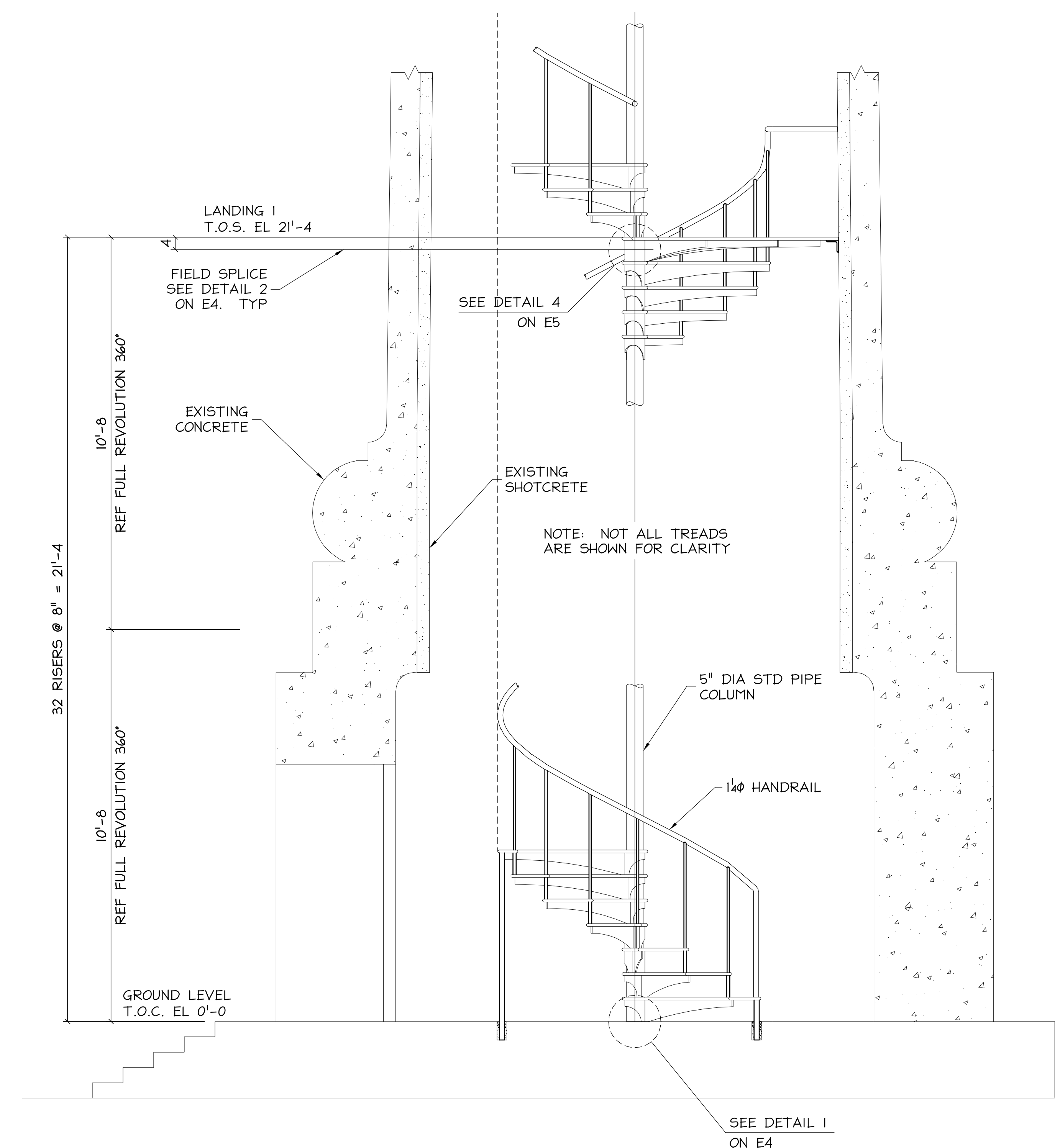


J:\COLUMBIA-WIRE-AND-IRON\49-001-001-(ASTORIA-COLUMN-STAIR)_WAS_99-225-001\SUBMITTAL--RECORD--\20090326-01\E01.DWG 3/26/09 2:23pm F090 melissamcneely



OVERALL STAIR ELEVATION
VIEW LOOKING NORTH



VIEW A
PARTIAL NORTH ELEVATION

NOTES:
ALL STEEL IS GALVANIZED PRIOR TO SHIPPING & IS TO BE PAINTED IN FIELD.

VERIFICATION OF DIMENSIONS, DETAILS, AND ETC. ARE REQUESTED WHERE INDICATED. IF EACH VERIFICATION IS NOT NOTED OTHERWISE, IT WILL BE ASSUMED TO BE CORRECT AS SHOWN

						ASTORIA COLUMN ASTORIA, OREGON		ENGR: - CONTR: -		ADI / ANGLE DETAILING, INC. ADI JOB# 49-001-001	
						COLUMBIA WIRE & IRON WORKS		5555 N. Channel Portland, Ore. 97217 www.cwil.com/503-286-6600			
						DRAWN BY: GDC		CHK'D BY: GBA		JOB NO: 49-001-001	
						DWC STATUS: DATE		DWC NO: E1			
REV	DATE	BY	DESCRIPTION	DWG STATUS	DATE						
I	3/26/09	GDC	FOR FIELD USE	FOR FABRICATION							
B	1/20/09	GDC	CONTRACT ISSUE	FOR FABRICATION							
A	11/6/08	GDC	ISSUE FOR REVIEW	FOR PURCHASING							
				FOR APPROVAL							