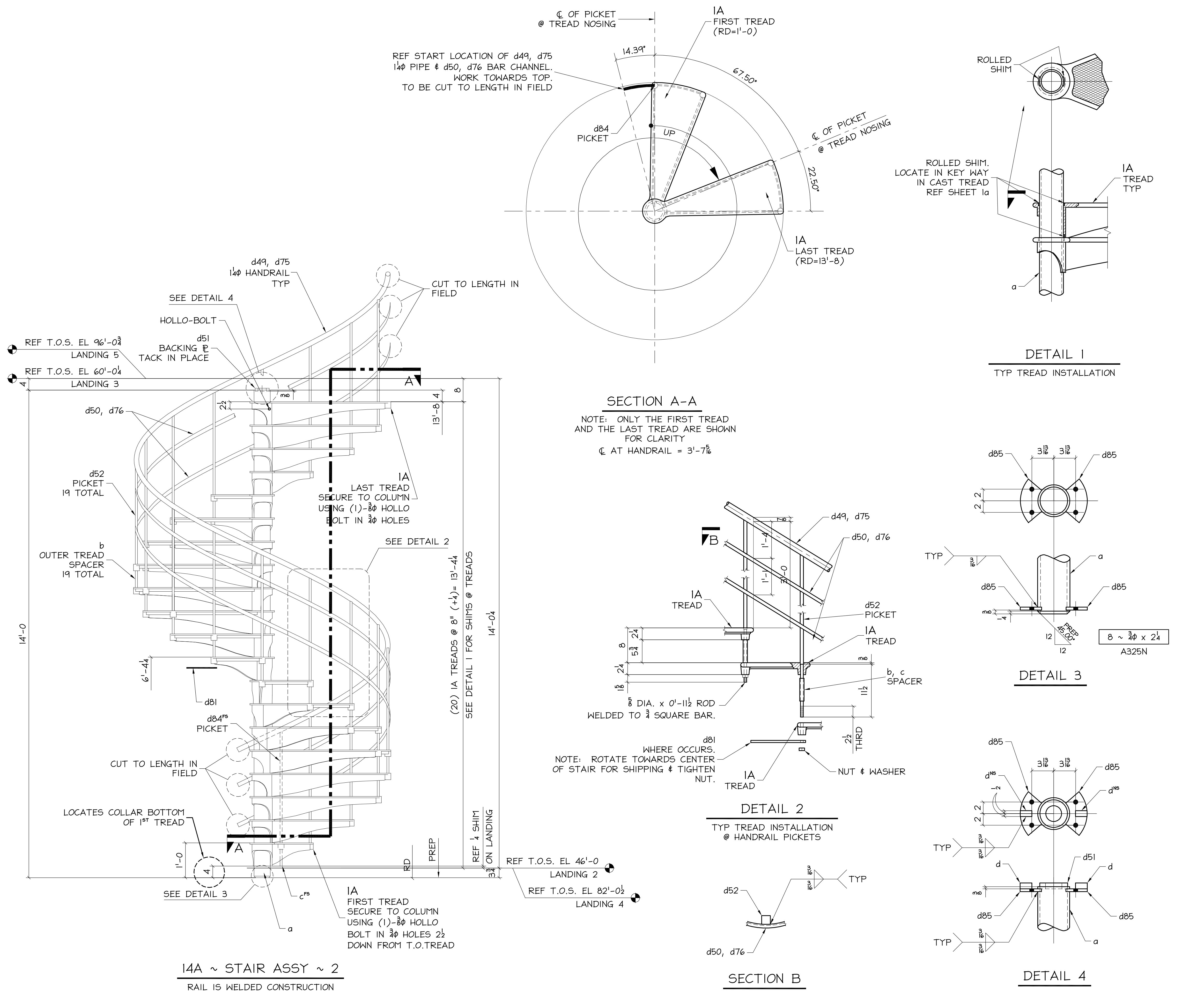


J:\COLUMBIA\_WIRE-AND-IRON\49-001-001 (ASTORIA\_COLUMN\_STAIR)\_WKS\_99-228-001\VDI\_S\B\TITL\_--REC090--\20080326-01\014.DWG 3/26/09 2:53pm F190 melissamovsky



BILL OF MATERIAL										
NO. TO SHIP	SHIP MARK	TOTAL No	PC MARK	DESCRIPTION	LENGTH		REMARKS	ADV. BILL	WEIGHT	
					FT.	IN.			UNIT	TOTAL
2	14A			STAIR ASSEMBLY						
		2	a	5φ STD PIPE	14	0	PREP IE			
		38	b	3φ STD PIPE	0	5 3/4	PLAIN MAT'L			
		2	c	3φ STD PIPE	0	6	PLAIN MAT'L			
		4	d	5φ BAR 1" x 1"	0	2	PLAIN MAT'L			
		4	d49	1 1/2φ STD PIPE	12	7 1/2	ROLLED			
		2	d75	1 1/2φ STD PIPE	8	0 1/2	ROLLED			
		8	d50	B5C 3/8 x 3/8	12	10 1/2	BAR SIZE CHANNEL, ROLLED			
		4	d76	B5C 3/8 x 3/8	8	4 1/2	BAR SIZE CHANNEL, ROLLED			
		2	d51	1 1/2" x 5/8"			FIT			
		38	d52	PICKET ASSY			See small part for BOM			
		2	d81	FB2x3	2	6				
		2	d84	PICKET ASSY			See small part for BOM			
		8	d85	1 1/2" x 3/8"	0	7 1/2				
		40	IA	CAST TREAD			SEE SHT 1a, b, c			
		4	ba	3/8φ HOLLO-BOLT			LHBM10 #2-SS			
				FIELD BOLTS						
8				3/8φ A325N BOLTS	0	2 1/2	W/ NUT			

**FABRICATION NOTES:**

HOLES UNO: 1/8φ  
WELD: E70XX  
REF DWG: E1  
MATERIAL UNO: A36  
TS=A500 GRB  
PAINT: GALVANIZE

**NOTES:**

VERIFICATION OF DIMENSIONS, DETAILS, AND ETC. ARE REQUESTED, WHERE INDICATED. IF EACH VERIFICATION IS NOT NOTED OTHERWISE, IT WILL BE ASSUMED TO BE CORRECT AS SHOWN.

REV	DATE	BY	DESCRIPTION	DWG STATUS	DATE
I	3/26/09	GDC	ISSUED FOR FABRICATION		

ASTORIA COLUMN  
ASTORIA, OREGON

ENGR: ADI / ANGLE DETAILING, INC.  
CONTR: ADI JOB# 49-001-001

**COLUMBIA WIRE & IRON WORKS**  
5555 N. Channel Portland, Ore. 97217  
www.cwil.com/503-286-6600

DRAWN BY: GDC CHKD BY: GBA JOB NO: 49-001-001 DWG. NO: 14