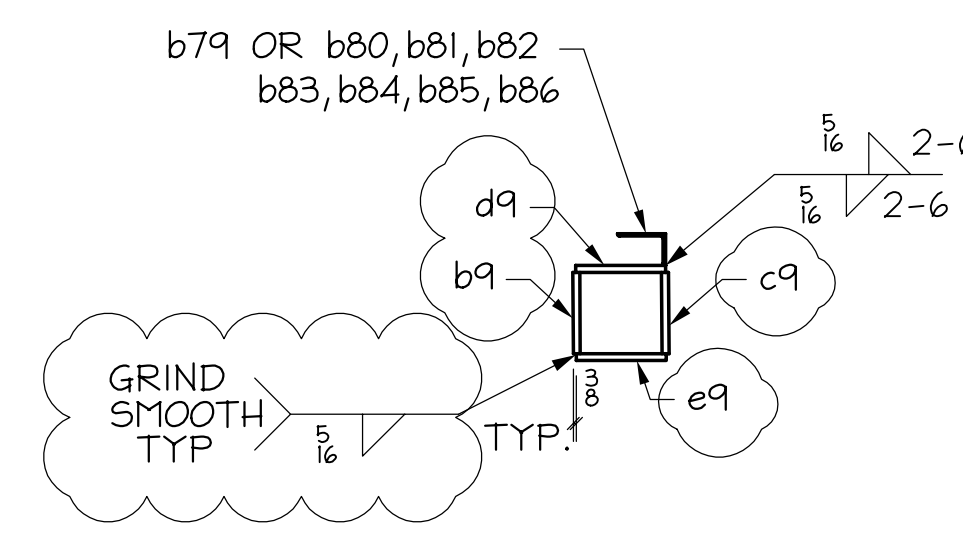
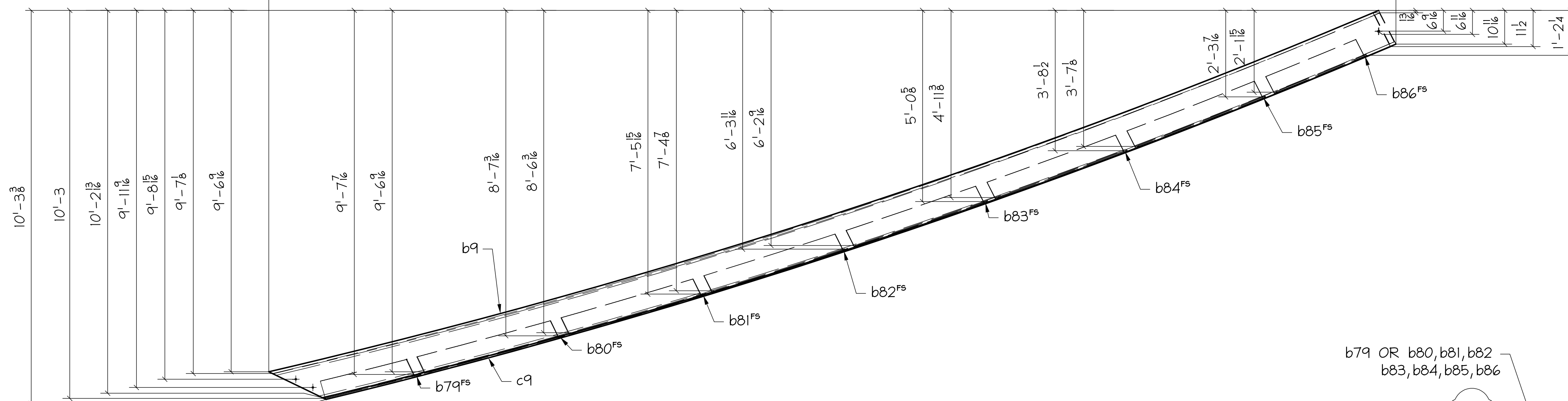
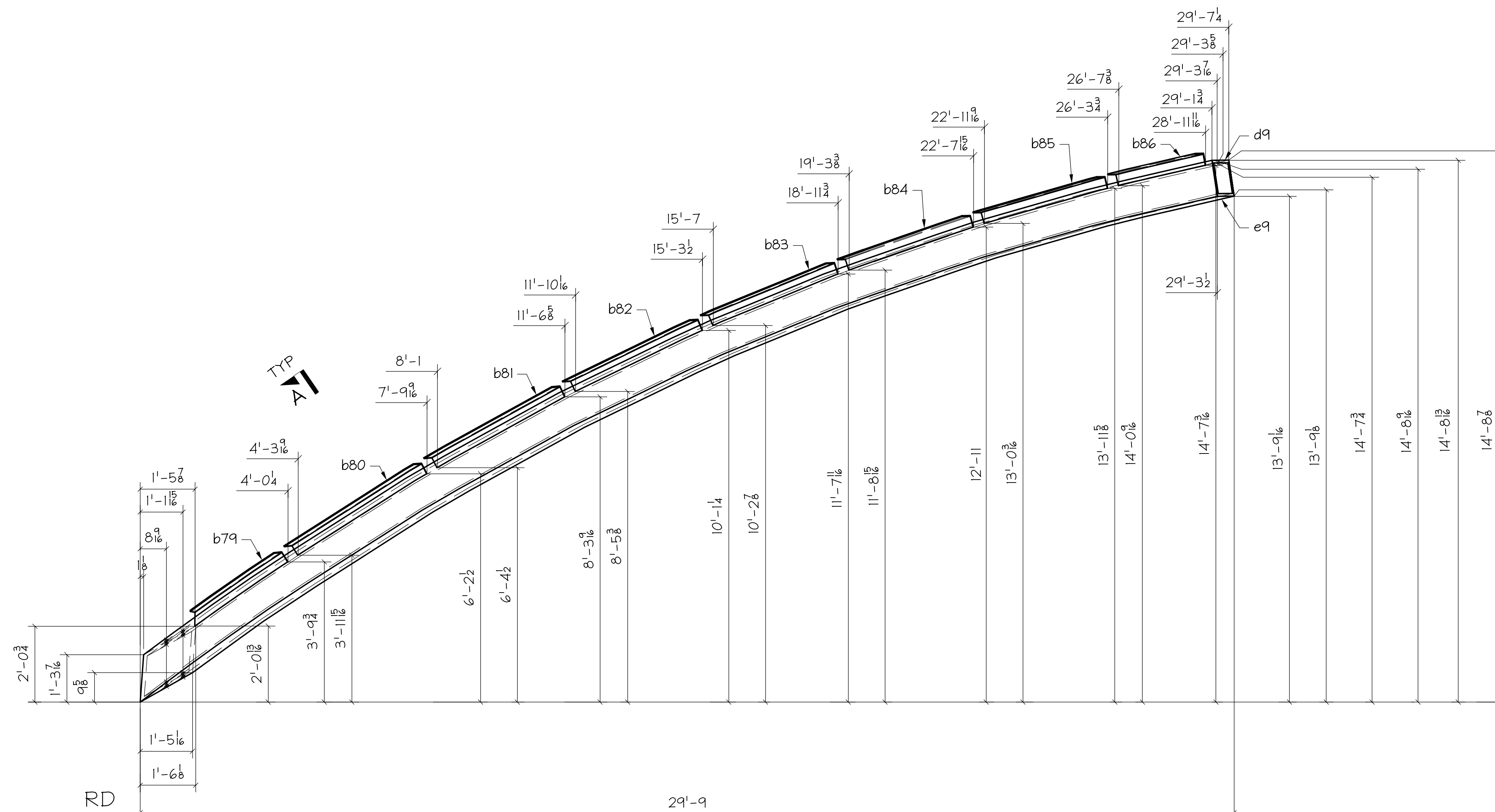


BILL OF MATERIAL

| NO. TO SHIP | SHIP MARK | TOTAL NO. PCS | PC MARK | DESCRIPTION | LENGTH | | REMARKS | ADV. BILL | WEIGHT | |
|-------------|-----------|---------------|---------|----------------|--------|--------|---------|-----------|--------|-------|
| | | | | | FT. | IN. | | | UNIT | TOTAL |
| ONE | 9A | | | FRAME | | | | | | |
| | | 1 | b9 | PL 6 x 34 1/8 | 33 | 11 1/8 | | | | |
| | | 1 | c9 | PL 6 x 32 1/8 | 32 | 10 | | | | |
| | | 1 | d9 | PL 6 x 19 | 33 | 9 1/8 | | | | |
| | | 1 | e9 | PL 6 x 19 1/8 | 34 | 1 1/8 | | | | |
| | | 1 | b79 | L 6 x 4 x 5/16 | 3 | 1 1/2 | | | | |
| | | 1 | b80 | L 6 x 4 x 5/16 | 4 | 4 1/2 | | | | |
| | | 1 | b81 | L 6 x 4 x 5/16 | 4 | 2 7/8 | | | | |
| | | 1 | b82 | L 6 x 4 x 5/16 | 4 | 0 1/8 | | | | |
| | | 1 | b83 | L 6 x 4 x 5/16 | 3 | 11 1/8 | | | | |
| | | 1 | b84 | L 6 x 4 x 5/16 | 3 | 10 3/8 | | | | |
| | | 1 | b85 | L 6 x 4 x 5/16 | 3 | 9 1/8 | | | | |
| | | 1 | b86 | L 6 x 4 x 5/16 | 2 | 8 1/8 | | | | |



9A ~ BOX 12x12x 7/8 ~ ONE

| FABRICATION NOTES: | |
|--------------------|---|
| HOLES UNO: 1/8" | |
| WELD: E70XX | |
| REF DWG: E3 | |
| MATERIAL UNO: A36 | |
| TS=A500 GRB | |
| PAINT: NO PAINT | |
| NOTES: | VERIFICATION OF DIMENSIONS, DETAILS, AND ETC. ARE REQUESTED, WHERE INDICATED. IF EACH VERIFICATION IS NOT NOTED OTHERWISE, IT WILL BE ASSUMED TO BE CORRECT AS SHOWN. |

| REV | DATE | BY | DESCRIPTION | DWG STATUS | DATE |
|-----|----------|----|--------------------|-----------------|------|
| B | 12/10/01 | WT | Add marks and weld | FOR FABRICATION | |
| A | 11/30/01 | WT | For Approval | FOR PURCHASING | |

JL PROPERTIES
ASRC CANOPY
ANCHORAGE, ALASKA

ENGR: BBFM
CONTR: DAVIS CONSTRUCTORS

ADI / ANGLE DETAILING, INC.
ADI JOB# 2001-146

NORDAHL METALFAB
14053 Pioneer Way East Puyallup, WA 98372
Phone: (253) 845-3201 FAX: (253) 845-2272

DRAWN BY: LBF
CHKD BY: TCM
JOB NO. 1158
DWG. NO. 9-A/E