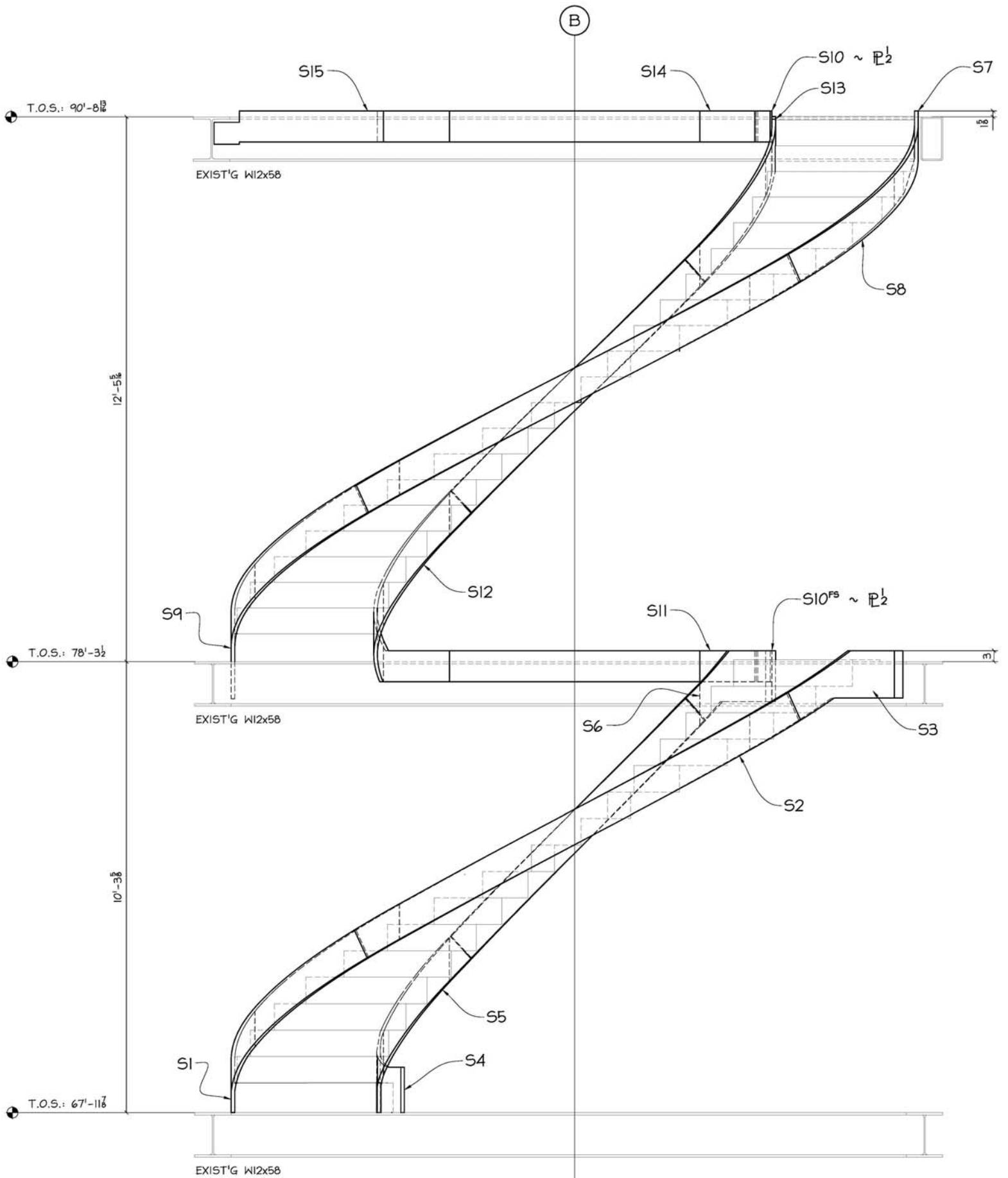


Angle Detailing, Inc
30470 SW Parkway Ave. Suite C
Wilsonville, OR 97070

A Structural Steel Detailing Service

www.AngleDetailing.com
info@angledetailing.com
503.682.3614





ELEVATION VIEW



WE WILL BUILD IT TOGETHER!

IF YOU HAVE ANY QUESTIONS, COMMENTS OR WANT TO WORK WITH US ON YOUR NEXT PROJECT CONTACT US:

SITE: www.AngleDetailing.com

**EMAIL: GORDON.AYRES@ANGLEDetailing.com OR
MELISSA.MOXLEY@ANGLEDetailing.com**

PHONE: 503-682-3614

FAX: 503-682-2860

Angle Detailing, Inc
30470 SW Parkway Ave. Suite C
Wilsonville, OR 97070

**A Structural Steel
Detailing Service**

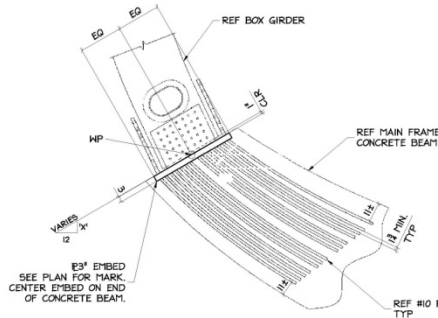
**www.AngleDetailing.com
info@angledetailing.com
503.682.3614**



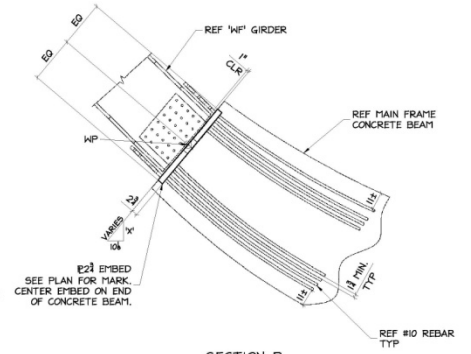
**WHEN WE SAY WE ARE A FULL SERVICE
STEEL DETAILING COMPANY WE MEAN IT!**

SERVICES

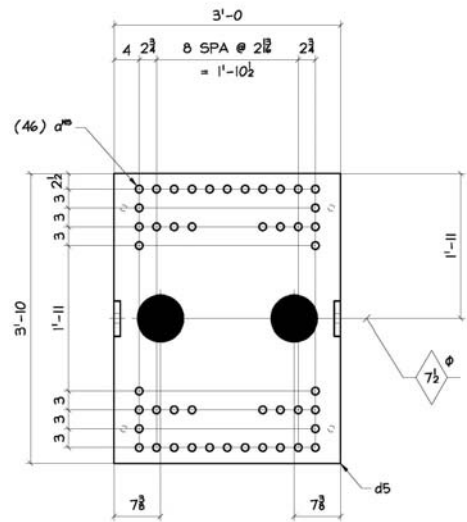
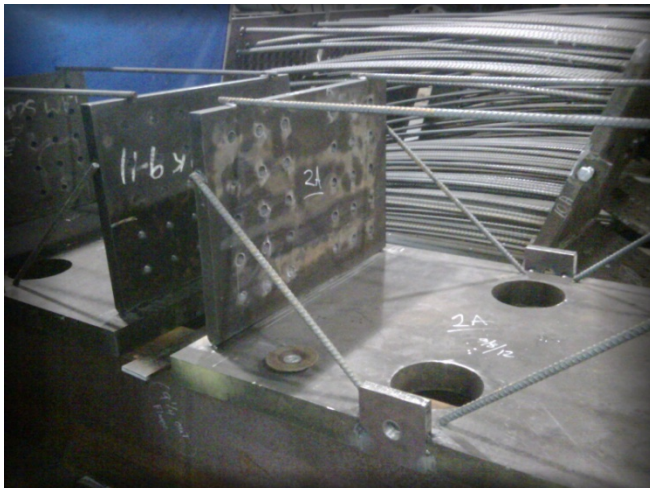
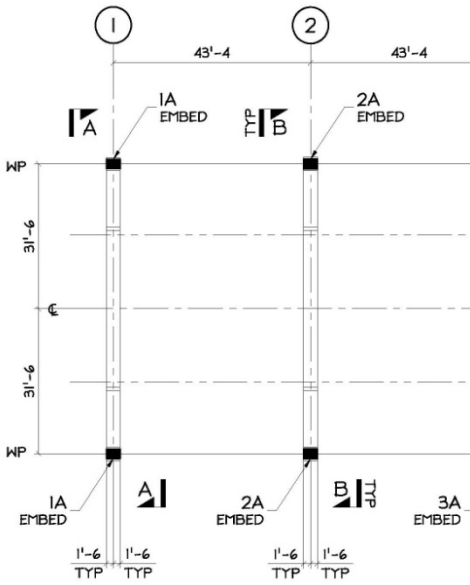
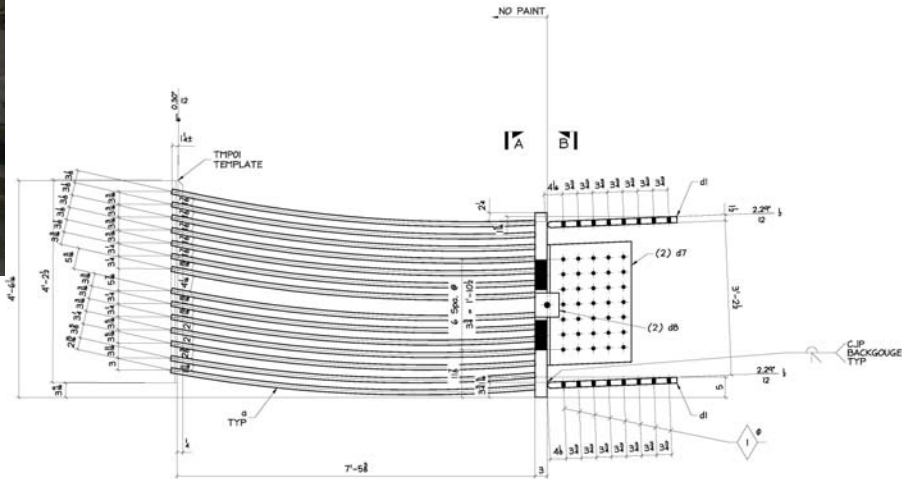
- PROPOSAL & START-UP MEETING
 - Collaboration for cost savings.
 - Marking Systems
 - 3D Modeling
 - Crane Placement Drawings
 - Zoning
 - Inventory advance material check list
 - advance shipping information (splices, sizes of material for trucking)
- Advance Bill of Materials
 - Material Order Sheets & Plans
- **Erection Plans & Details**
 - Anchor Settings
 - Embedment
 - Structural Framing
 - Ribs/Girders
 - Trusses
 - Stairs
 - Ladders
 - Grating
 - Lintels
 - Guardrail
 - Handrail
 - Docks
 - Bollards
 - Catwalks
 - Bridges
 - Arbors
 - Sculptures
 - Precast
 - Any misc. steel not mentioned above.
- Request for Information
- Change Orders (with back up information)
- Drawing Logs
- Fabtrol / Pedimat output information
- CNC DATA / DSTV files
 - .dxf
 - .nc1
- **3D Modeling/BIM** files As Requested (We have NO problem customizing for customer needs).
- Custom (Reverse Engineering. just ask us we have done reverse engineering for car frames, 747 engine cowling, door locking mechanisms, life safety equipment, etc.)
- FTP - Site
 - Maintain Current Set (Shop & Erection drawings)
 - Submittal Records (with copy of email transmittals)
 - Current log
 - Customer Request



SECTION A
DESIGN REF: G5192E, 3/56.05

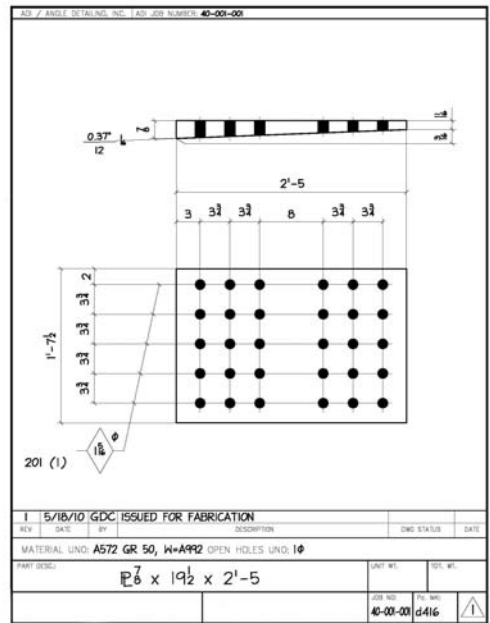
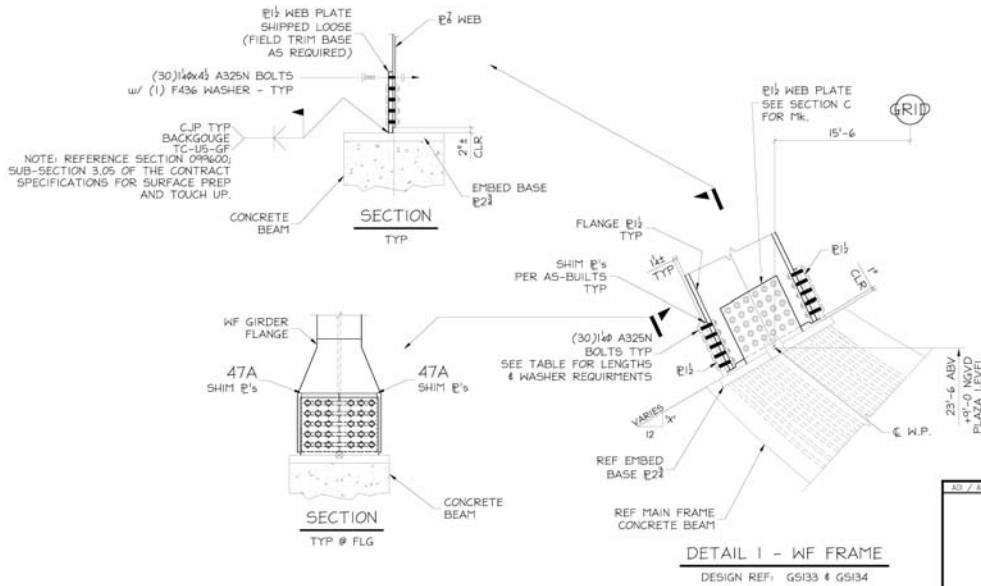
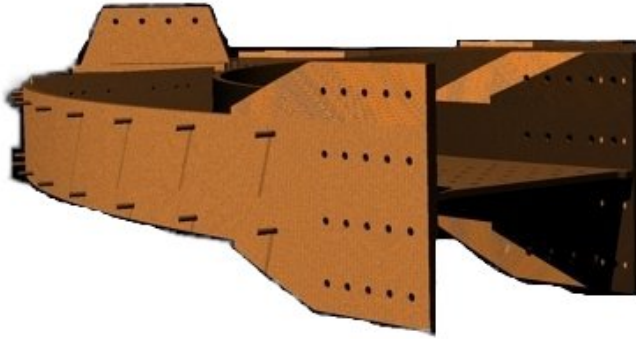


SECTION B
DESIGN REF: G5194E, 3/56.05

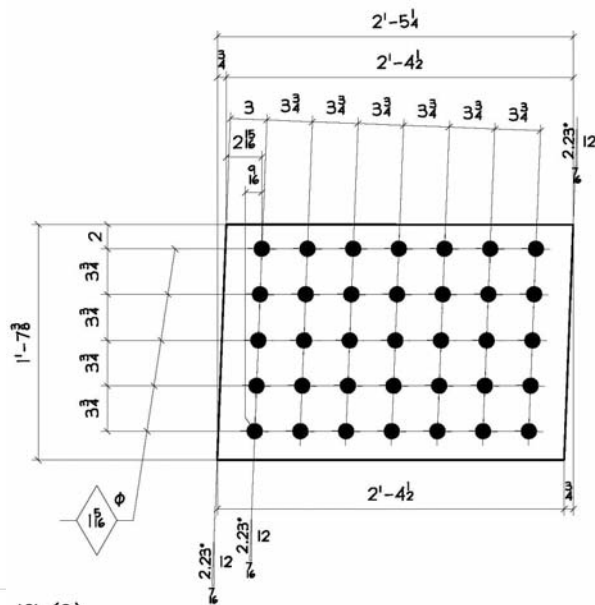


SECTION A
CONNECTION PLATES
NOT SHOWN FOR CLARITY

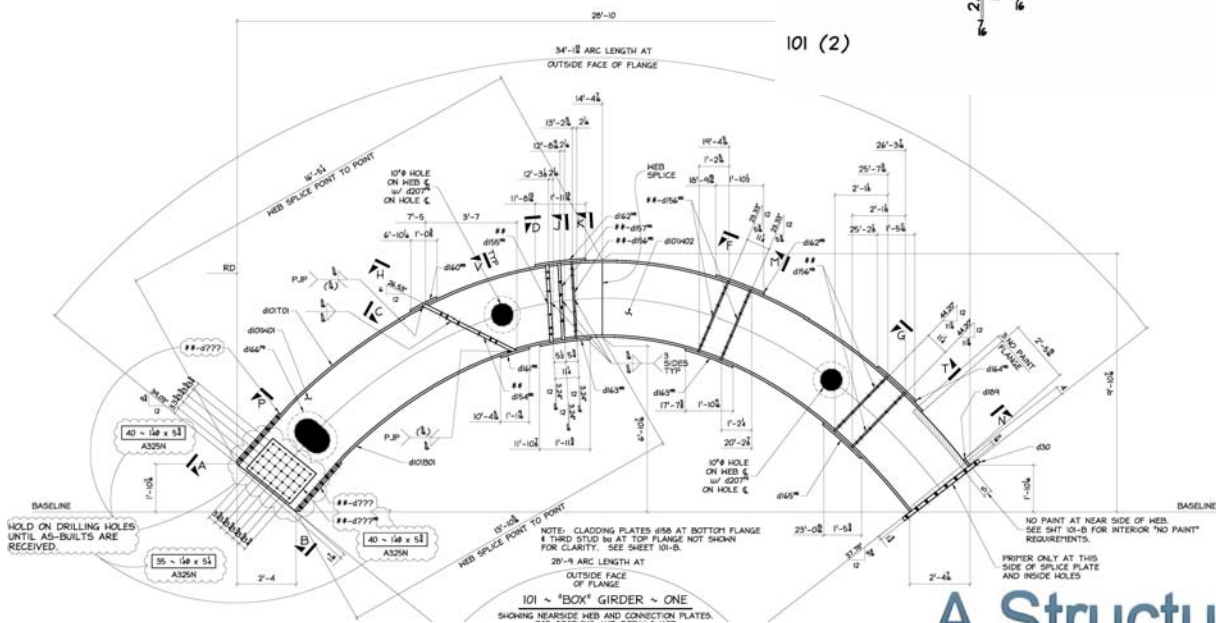
A Structural Steel
Detailing Service



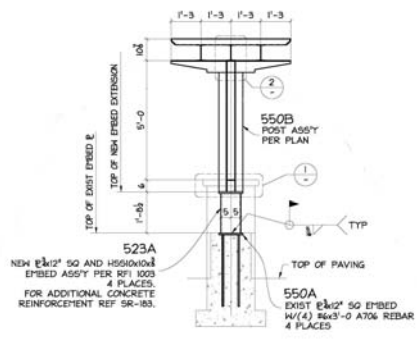
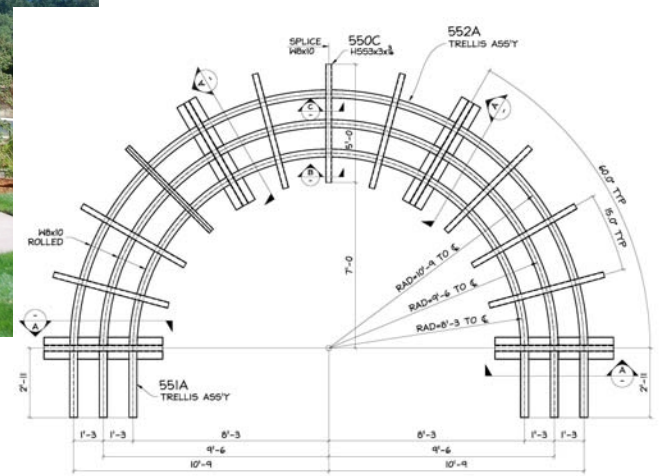
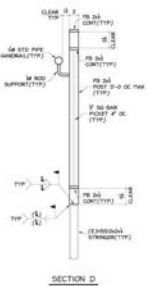
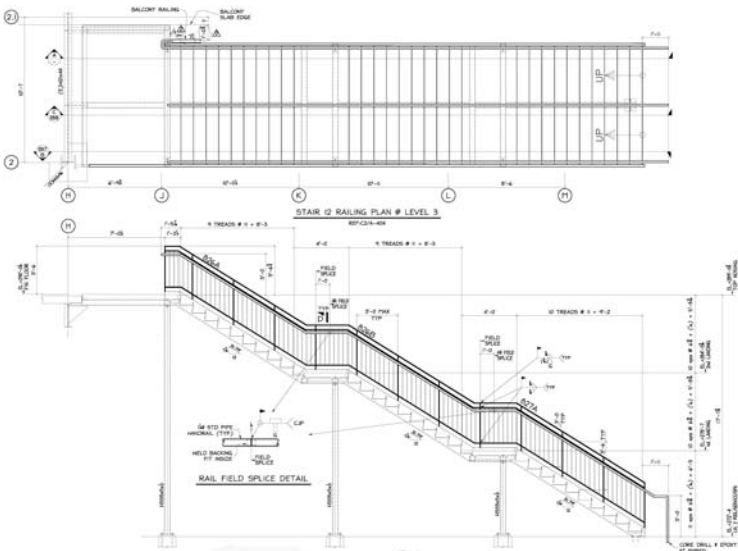
05.24.2010 14.53



101 (2)

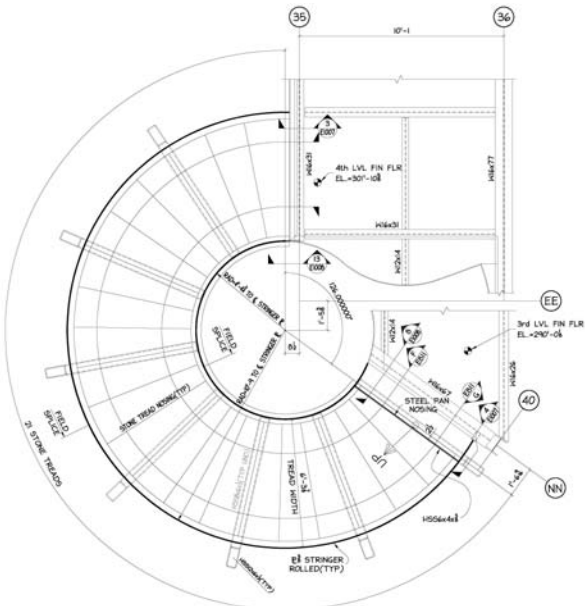


**A Structural Steel
Detailing Service**



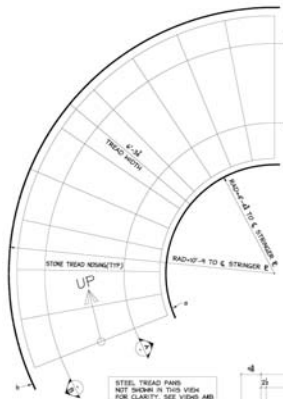
VIEW A
 REF: C/S-606, E, C/L-503
 REVISED PER SKETCH SR-163 IN RFI 1003

MEADOW GARDEN TRELLIS FRAMING PLAN
 REF: S-608, L-503

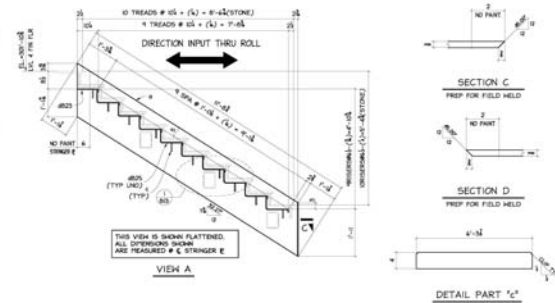


STAIR 2 PLAN 3rd to 4th LEVEL

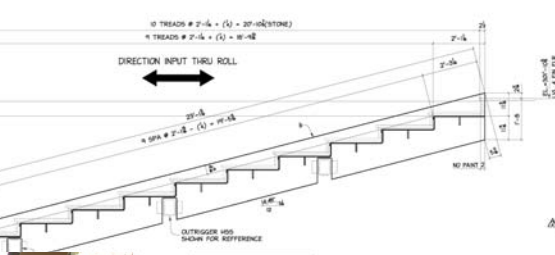
REF: 41000, 41001A-01



B18A ~ STAIR ASS'Y ~ ONE



VIEW A



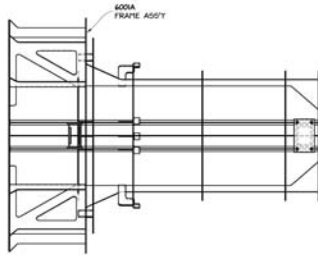
VIEW B

B18B ~ STAIR ASS'Y ~ 2

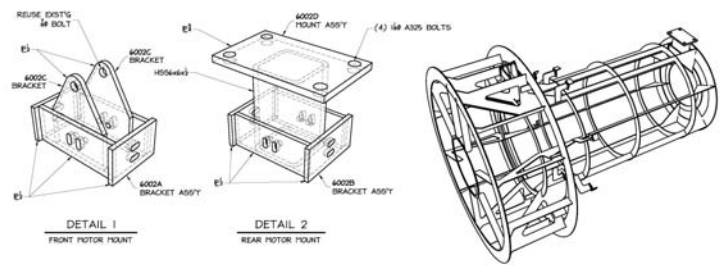
REF: 41001



A Structural Steel Detailing Service

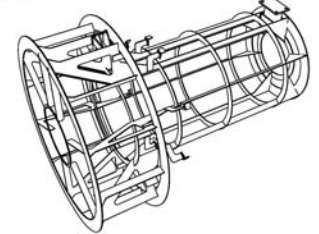


PLAN VIEW
STEEL FRAME

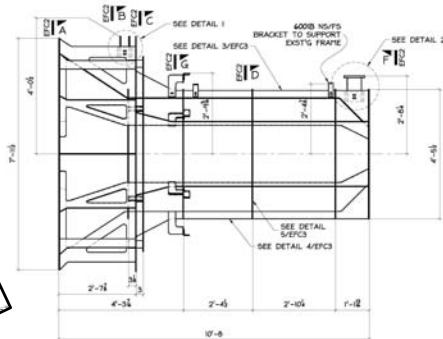
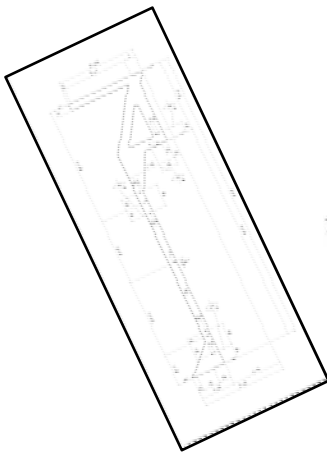


DETAIL 1
FRONT MOTOR POINT

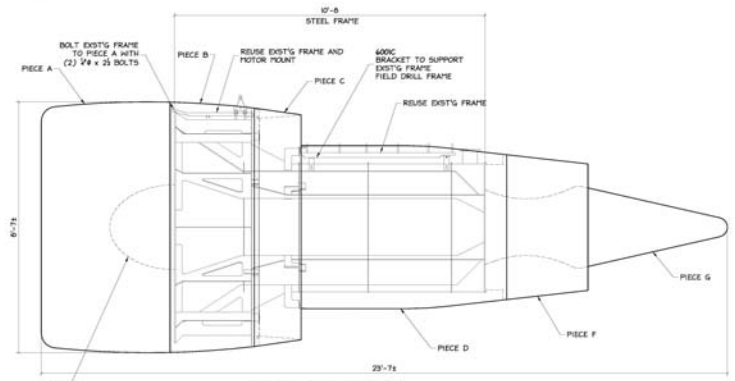
DETAIL 2
REAR MOTOR POINT



3D VIEW
STEEL FRAME



ELEVATION
STEEL FRAME

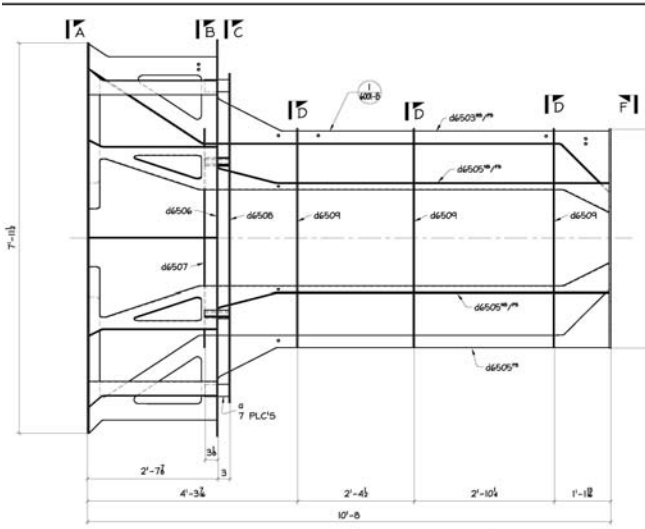
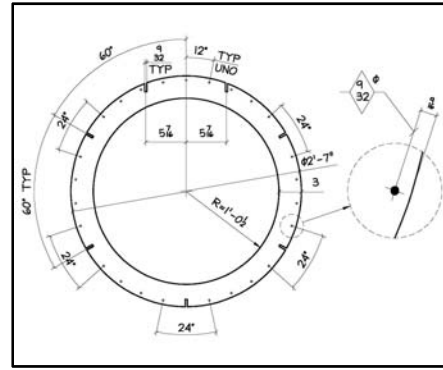


ELEVATION WITH COWLING

SHOP NOTE:
FRONT FAN CLOSURE & REAR FAN CLOSURE
MAY BE NEEDED. PLAN TO ADD ONCE
HE GETS INSTRUCTIONS.

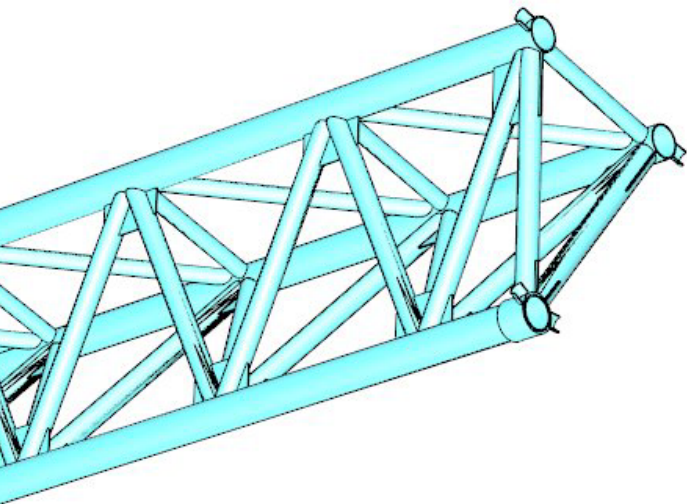
HEIGHT STEEL FRAME = 1300Lbs
HEIGHT COWLING = 1000Lbs

NOTE:
1) ALL BOLTS 1/4 GRADE 5 UNLESS NOTED
2) ALL HELDS TO BE 1/4" FILLET UNLESS NOTED

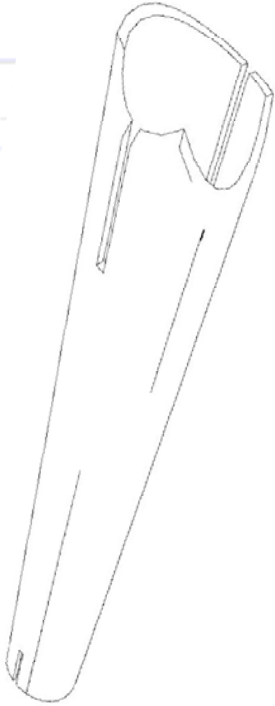


6001A ~ FRAME ASS'Y ~ 4
ELEVATION VIEW





**A Structural Steel
Detailing Service**



With our software, we can provide files used in multi-axis pipe cutting equipment. We model pipe intersections and weld bevels for CJP / PJP as required by design.

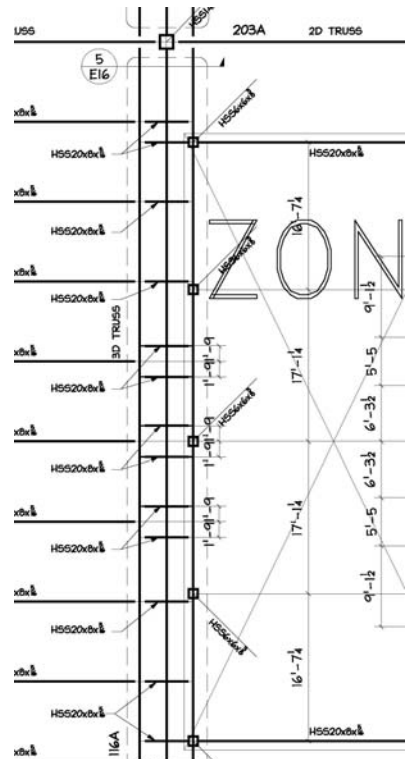
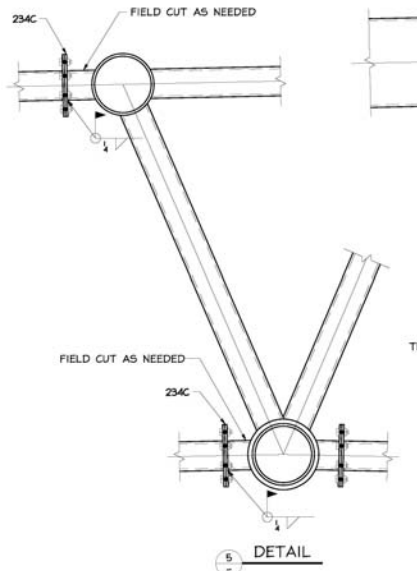
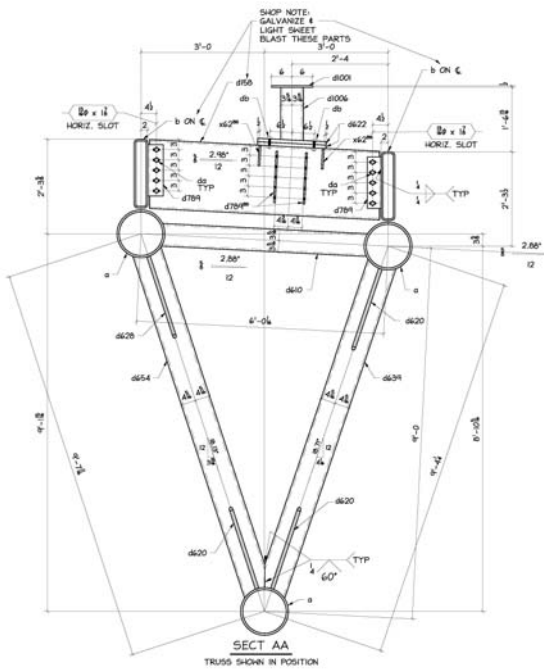
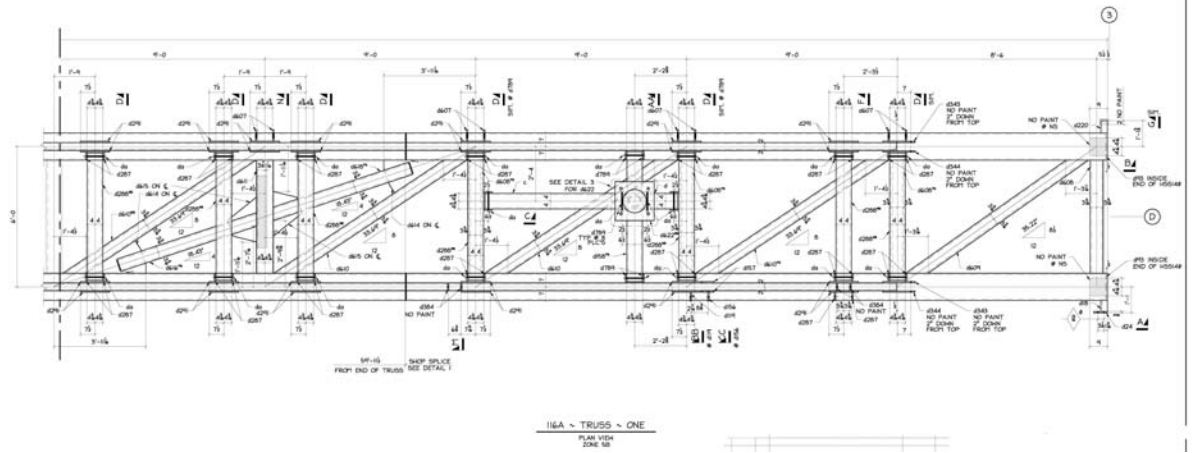
The companies providing the cutting equipment use our files for setting their torch path, to produce a fully cut to profile pipe (slots, holes and weld preparation's of almost any shape).

Pipe cutting, or pipe profiling, is a mechanized industrial process, which removes material from pipe, or tube to create a desired profile. Typical profiles include; straight cuts, miters, saddles and mid-section holes. These complex cuts are usually required to allow a tight fit between two parts that are to be joined via arc welding.

Cutting is performed by means of a thermal torch (plasma or oxyfuel) and is mounted to the last axis of a multi-axis machine. The axes of the multi-axis machine are powered by electric motors and are synchronized to create a path for the torch and pipe that yield a desired profile. The synchronization of axes is accomplished either mechanically, via; cams, levers and gears, or electronically, via; microprocessors and controllers.

Pipe cutting machines are popular in; offshore, pipe processing, ship building, pressure vessel, structural and mechanical contracting manufacturing because of the complex cuts and profiles typically required in their respective industries. (Definition taken from Wikipedia 8/12/2010)





A Structural Steel Detailing Service



ANGLE DETAILING, INC.

OPENED 1994.

All of our detailers are very capable of Project Managing and have been in the industry on average 20 years. We are constantly improving, learning, customizing, and adapting to meet our customers' needs and growth.

Our emphasis is not on the size of the project. Our competent and courteous Steel Detailing & Project Management staff will help you to get through projects large or small.

Beyond offering detailing and drafting services, we provide consulting and design-assistance services to Fabricators, General Contractors, Architects and Engineers for complex projects. These services range from pre-bid meetings geared towards cost savings and design simplification, to full 3D modeling and connection design for design-build projects. We also hire Project Engineers as required.

Many of the projects that we work on require 3D support and coordination with the Architects and Engineers due to schedule and design build factors. One of our key strengths is our ability to work directly with the Architects and Engineers on these complex projects so schedule impact is minimized, and quality is the focus. In the big picture that means saving the Fabricator money.

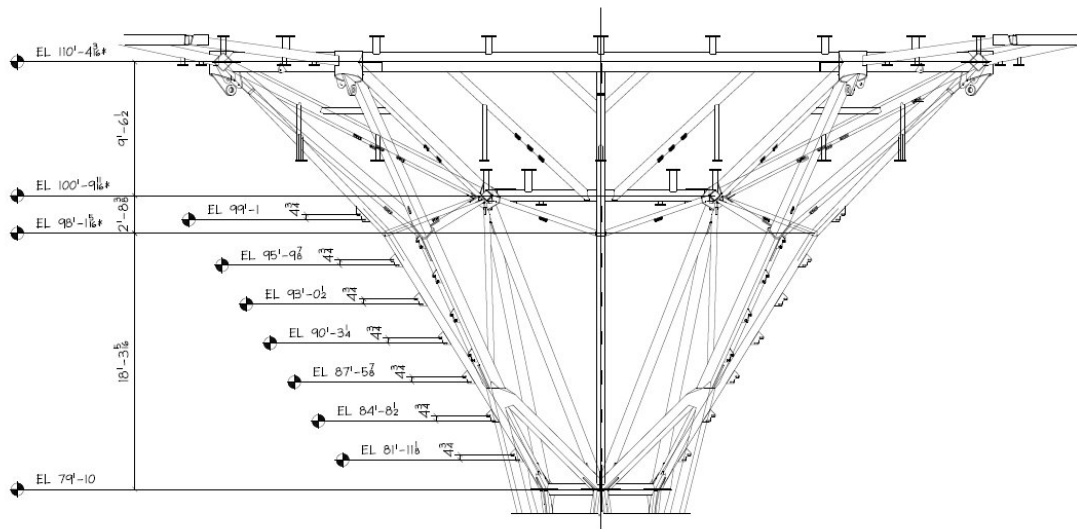
We make the Erector a priority. If connections, members and sequences are not approached with the Erector in mind, the detailing would not be complete. We want to know any methods, or adjustments in the project that will facilitate the Erector. If we do not have input, we move forward, we set up connections and member sizes for shipping and request confirmation that our approach is acceptable to our customer. Best judgments –and- solutions are what we offer. We do not just do our work per design information without asking "why?" or without providing an alternate when possible to facilitate erection and fabrication. We provide erection aids and work to reduce welding and complexity whenever we have the opportunity.

ADI employs the latest in computer, printing, and communications technologies to quickly process incoming designs and outgoing drawing packages. These technologies allow us the flexibility to accept from - and provide to - our customers virtually any form of electronic models or hard-copy drawings. (Ex: 3dm, .tiff, .pdf, .plt, .dwf, .dwg etc.). This permits us to save you a day of waiting for a Fed-X delivery of your drawings; you will receive drawings within hours or minutes of us finishing them. We know that TIME IS MONEY.

We maintain a full-time programmer to customize our systems, so we may meet the demands of the industry, and to constantly improve efficiency and quality.

WE WILL BUILD IT TOGETHER!

WE REALLY HAVE NO DOUBT ONCE YOU USE OUR SERVICES YOU WILL REALIZE HOW MUCH EASIER IT IS TO HAVE US HELP MANAGE YOUR PROJECTS SO THAT YOU CAN FOCUS ON THE FABRICATION!

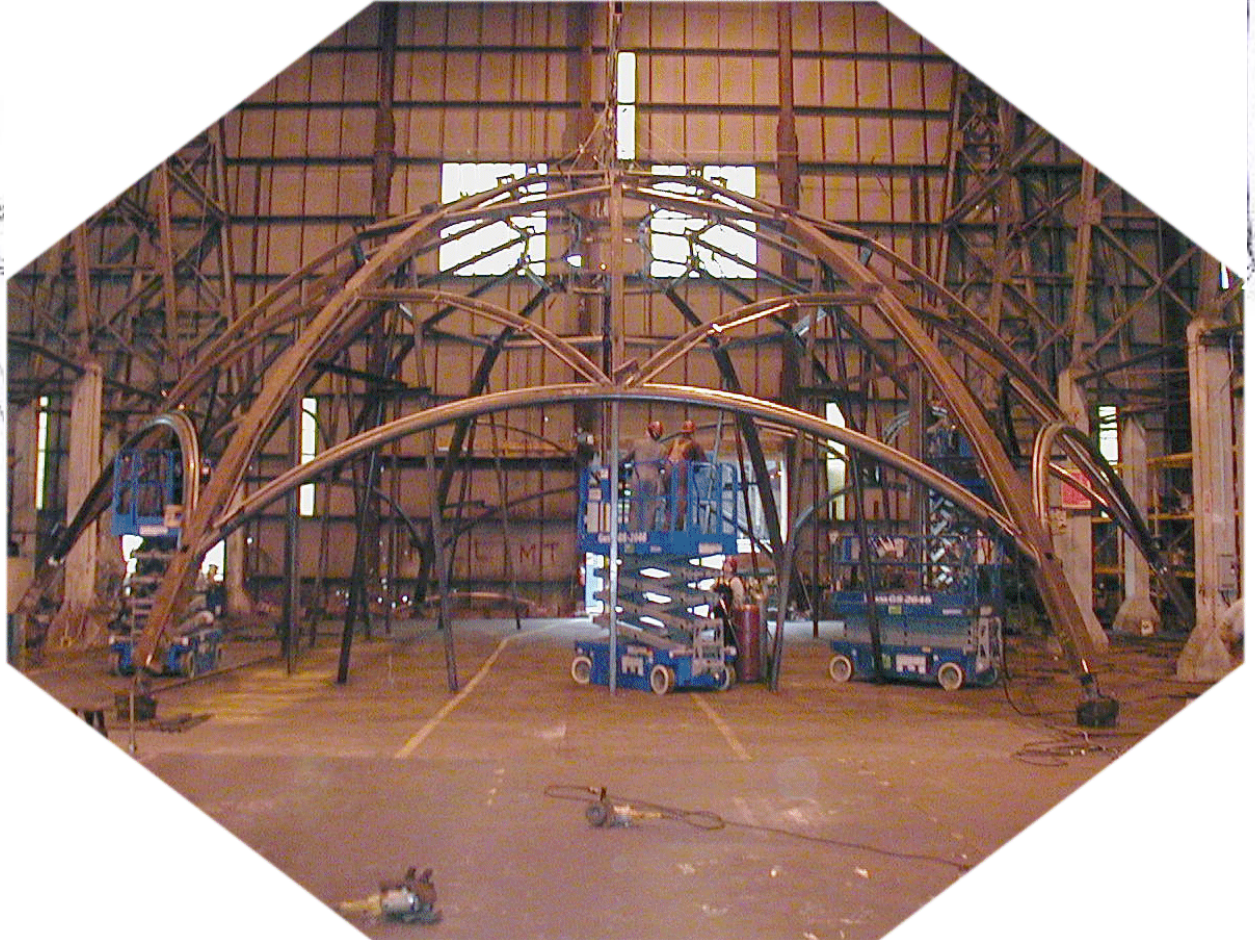
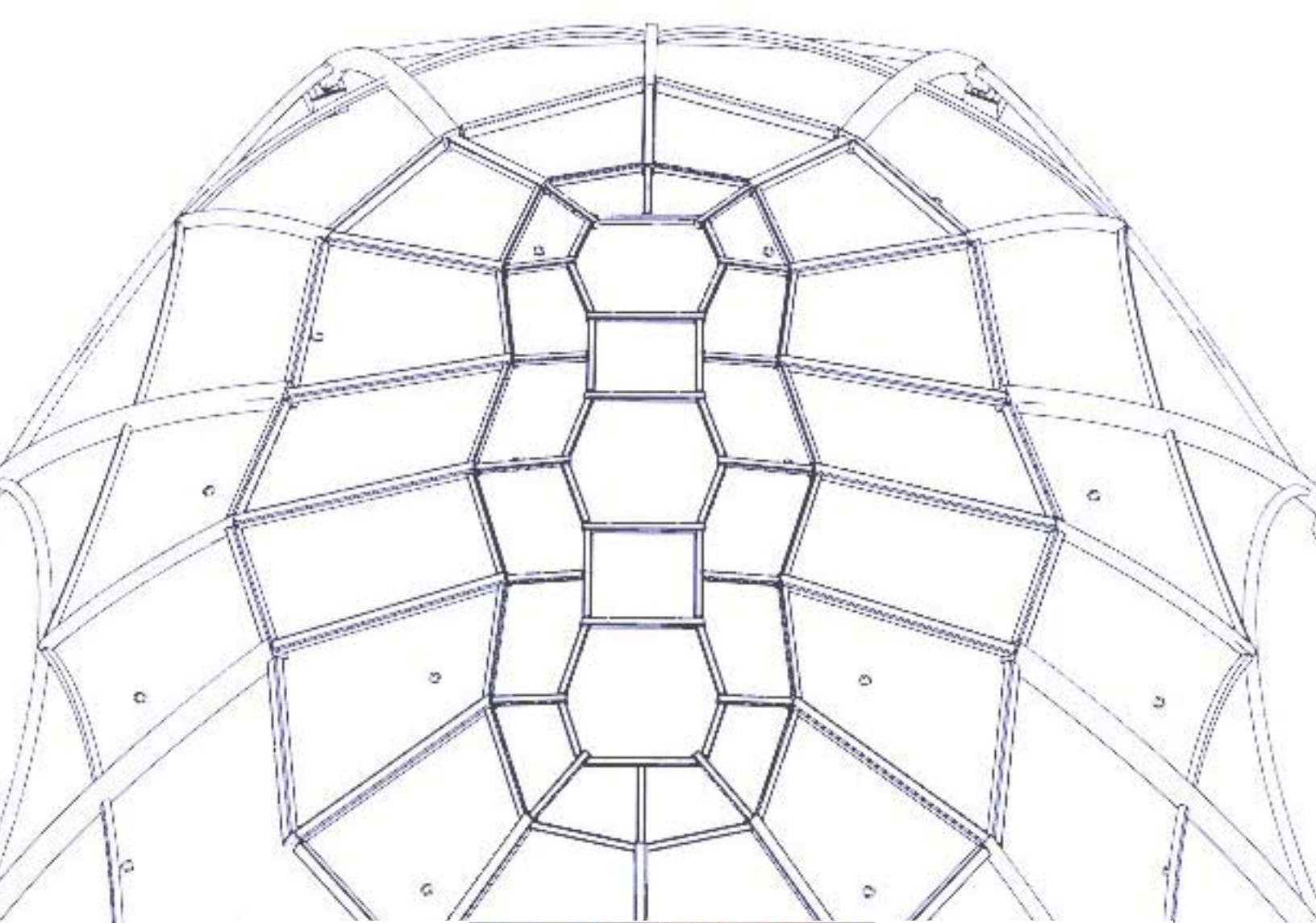


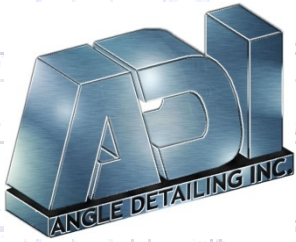
SECT A

BRANCHES/ROOF - ELEV

NOTE:
CLIPS DIMENSIONED EXIST
ON ALL FOUR QUADRANTS

A Structural Steel
Detailing Service





WE DON'T JUST ASK THE IMPORTANT QUESTIONS. WE FIND SOLUTIONS!

SOFTWARE ANGLE DETAILING INC. UTILIZES:

AutoDesk:

- Autocad 2011
- Autocad Structural Detailing 2011
- Revit Structure Suite 2011

McNeel & Associates:

- Rhino 4

Design Data:

- SDS/2.722

Dassault Systems Solidworks Corp:

- SolidWorks 2010

Angle Detailing:

- Custom in house programming for doing KSS and CNC information exports from AutoCAD drawings.

Microsoft:

- Windows XP Pro

Adobe:

- Acrobat 9 Pro

**A Structural Steel
Detailing Service**

Angle Detailing, Inc
30470 SW Parkway Ave. Suite C
Wilsonville, OR 97070

A Structural Steel Detailing Service

www.AngleDetailing.com
info@angledetailing.com
503.682.3614

